

April/May 2023

The **Swanmore** *Link*



**Easter celebrations
Coronation events
Victorian cricket
Meon Valley miners**

Inside this issue

From the churches

From St Barnabas' Church	1
St Barnabas' Services	2
From the Methodist Church	3
Church news	4

Around the village

Village news	6
Swanmore Conservation Group	8
Swanmore Society	11
The Coronation Weekend	12
Swanmore Parish Council	14
Local walks	17
Swanmore Park Cricket Club	19
Nature notes	22

Around the district

From our District Councillors	24
District news	25
Dates for your diaries	29

Advertisers' Directory	30
------------------------	----

Village Directory	44
-------------------	----

**Deadline for the June/July issue is
Wednesday 10th May 2023.**

**Copies will be available to collect at
The Link from
Wednesday 31st May 2023.**

The Swanmore Link is published by the Parochial Church Council of Swanmore six times a year.

Advertising: John Austin 01489 893409
Distribution: Sue de Vere 01489 892768
Editor: Penny Clive 01489 895923
editor@stbarnabas.org.uk

Editorial team: Caroline Edser, Allison Gurry
Village directory: Roger de Vere 01489 892768
deverer2@gmail.com

Front cover: Hungry butterfly by Berty Ferrone
Back cover: Sunset over St Barnabas' spotted by teacher Jo Hughes on 1st February 2023 as she left the Primary School.

Printing managed by Jellyfish Solutions
© Swanmore PCC 2023

The
Electoral
Commission

Winchester
City Council



No ID? You can apply for free voter ID

Find out more at

winchester.gov.uk/VoterID

or call 01962 848 125

See p.16 for
full details

The Swanmore Link

The Swanmore Link – which is free of charge to all residents – can be collected from The Link (between the church and the Paterson Centre) whenever it is open, generally between 9am and 5pm each day.

You are welcome to take additional copies for new neighbours or any in the village you know who may have difficulty collecting copies themselves.

If you are housebound or disabled and unable to collect your magazine then please contact Sue de Vere who can arrange delivery.

The magazine can also be posted to you at a cost of £11 p.a. to cover postage. To arrange payment please contact treasurer@stbarnabas.org.uk.

Alternatively, the magazine is available to read online at the St Barnabas website (<https://stbarnabas.org.uk/information-hub>). Please contact Gail Norris at the Parish Office (office@stbarnabas.org.uk) if you would like to be alerted by email when the online version is available.

Decisions, decisions

We have nearly reached Easter. Without a Christian clock in your head, the event presumably revolves around family get-togethers, school holidays, short spring breaks or trips to the garden centre. Living in England you will probably know that, wherever you are, the weather will be unpredictable.

My childhood memory is of a caring B&B landlady in Minehead taking pity on us one snowy April day. The rules said we had to be out all day after breakfast, but she told us to return if we got too cold. It happened to be a Good Friday; by Easter Sunday the sun was shining brightly and coats forgotten.

If you're aware of the Christian clock inside you, Easter will mark the end of Lent – and release from some Lenten discipline (giving up chocolate or gossiping etc.). You will also know that a whole series of church services are about to happen; like backed up London buses, Palm Sunday, Holy Week, Maundy Thursday, Good Friday and Easter Sunday come along in quick succession.

In my case, Easter this year is the end of a section of life that started with an assembly in Swanmore Primary School on 22nd February, Ash Wednesday, the

beginning of Lent. The children knew all about Lent lasting 40 days, and that this mirrored the time Jesus spent in the desert deciding on his future: he'd been a carpenter until then and, following this self-examination, he ended up changing the world instead.

In that assembly, I asked the children how long they thought it takes to make good decisions. Ten seconds was the shortest time suggested to choose between Shreddies and Coco Pops, whilst five months was the period someone thought it might take to decide between becoming a concert pianist or a doctor (assuming you were good at both music and science). In my case, bringing my 15-year career with Banco do Brasil SA to an end and starting training to be a vicar took 12 months from the first thought to selling our house and going to college.

I wonder what decisions, if any, you are presently sitting on? It might be about a choice of school, a health niggles that has been set aside, an invitation to take on something new, or the thought that it's time to give something up. A few people might be thinking deeper thoughts about who they are and how they can spend the rest of their lives well.

Towards the end of March, I will be leading a two-day consultation for clergy who are near to retirement. They will come and stay in Salisbury with their spouses (if any) and we will create a space for them to think through the decisions they need to make – where to live, whether to continue going to church (some clergy don't), what interests/hobbies to take up and so on. It will, of course, take them far more than two days to move into this next stage of life, but you've got to start somewhere, and it doesn't involve the desert.

I hope that you have a good Easter with family and friends and that you have a chance to recharge your batteries. I also hope that, if you have some pending decisions, the Easter holiday might give you the chance to work on them whilst you are temporarily free of the day-to-day stuff. Jesus took himself off to be with God in silence – and that might be just what you need – but a conversation with a close friend or family member you trust might do just as well.

Happy Easter when it comes.



The following contact details may be useful:

Ministry Team: ministers@stbarnabas.org.uk

Nick & Hazel Whitehead on 01489 895327

Jill Phipps on 01489 891117

Churchwardens:

churchwardens@stbarnabas.org.uk

Paterson Centre/Parish Office:

office@stbarnabas.org.uk or 07857 936023

We encourage everybody to continue to pray for the people of Ukraine, for those who have power to work for peace, for those made homeless in the conflict and for all those who are suffering and living in fear.



Revd Canon Nick Whitehead

Services April to June

Sunday 2nd April

Palm Sunday

No 8am

10am Holy Communion. We will be joined by Bishop Jonathan Frost, our diocesan bishop. He will preach and preside. Do come and meet him. There may be an opportunity to have a Q&A session over coffee. Sunday Club meets. There will be a Palm Sunday procession leaving from the Village Hall at 9.20am, hopefully following a donkey.

Wednesday 5th April

Wednesday of Holy Week

7.30pm Compline said in church

Thursday 6th April

Maundy Thursday

7.30pm A celebration of the Last Supper

Friday 7th April

Good Friday



10am–11.30am Easter Craft for Children. Finishing with hot cross buns and a drink; parents welcome and encouraged to stay and join in.
2pm–3pm The Service of the Cross. An hour's meditation and liturgy led by Bishop Ian Brackley.

Sunday 9th April

Easter Day

6am Early morning service of Communion

8am Holy Communion

10am All Age Easter Sunday Communion



Sunday 16th April

Low Sunday

8am Holy Communion

10am Café Church

Sunday 23rd April

Third Sunday of Easter

No 8am



10am Holy Communion. Canon Angela Tilby preaches and presides. We will be having cake and bubbly after church to celebrate Nick Whitehead's 70th birthday. Do come and eat the cake.

Sunday 30th April

Fourth Sunday of Easter

No 8am

10am Holy Communion service.

Sunday 7th May

Fifth Sunday of Easter

8am Holy Communion

10 am Coronation Praise. With rousing singing, moving readings and fruit cake (the King's favourite).



Sunday 14th May

Sixth Sunday of Easter

No 8am.

10 am Holy Communion

Sunday 21st May

Seventh Sunday of Easter

8am Holy Communion

10am Café Church



Sunday 28th May

Pentecost

No 8am

10am Holy Communion

Sunday 28th May

1pm Wedding of Harry Savage and Danielle

Emery. Danielle is a science teacher at Swanmore College and anybody is welcome to come to the church to see them married.



Sunday 4th June

Trinity Sunday

8am Holy Communion

10am Holy Communion. We welcome Canon Dr Steve Summers to preach and preside for his third visit to Swanmore.

Sunday 11th June

St Barnabas Patronal Festival

No 8am

10am Holy Communion. Jill Phipps will preach on her last official Sunday at St Barnabas before her ordination on 24th June. Do come and support her.

Swanmore Methodist Church

Chapel Road, Swanmore, SO32 2QB



Minister: Revd Phil Griffin
Tel. 01329 833518
Email: rev_phil@outlook.com

Loving God Loving our community Making disciples for Jesus

Sunday Services in April and May

All services will commence at **10.30am**.

2nd April	Palm Sunday – Kathy Elvy
9th April	Easter Day – Revd. Phil Griffin – Holy Communion
16th April	Kathy Elvy
23rd April	Ron Morgan
30th April	Jill Letts – local arrangement
7th May	Grace Westerduin
14th May	Revd. Bob Kitching – Holy Communion
21st May	Revd. Johns
28th May	Kathy Elvy

There will be a warm welcome for all who wish to join us for these services and please stay for tea and coffee afterwards

In need of Prayer?

Place your prayer request in the post box on the wall next to the Chapel entrance, add your contact details if you would like a visit and we'll be in touch, or visit our website.

Thursday Fellowship

We hold a Fellowship meeting every Thursday 2.30pm–3.30pm – an opportunity to meet with fellow Christians for prayer, Bible reading and discussion. Meetings are held via Skype and once a month in person in the Church. If you would like to join us please contact Jill Letts – 01489 896182; email: jill.letts@hotmail.com

Coffee and Company

Weekly on Tuesdays at 10am to 12 noon.
Enjoy company, coffee, tea and biscuits/craft; if you would like to bring knitting/sewing etc. or just come along for a chat we will be pleased to see you.

TLC (Tuesday Ladies' Club)

4th April at 7.30pm – All about herbs with Penny Clive
9th May at 7.30pm – Age Concern: Find out about Powers of Attorney and much more
All ladies welcome – non-members £3 per meeting

Men's Group

Thursday 20th April at 7.30pm – To be arranged
Thursday 16th May at 7.30pm – To be arranged
All are welcome and there will be light refreshments.
For further details contact Martin Letts on 01489 896182

Looking for somewhere to hold an event?

Our premises are now available for hire. Please visit the "Use our venue" page on the church website for details or email: swanmoremclettings@gmail.com

Easter and Jesus' Resurrection

Our Methodist Minister Revd Phil Griffin has asked me to write an article this month and suggested an Easter topic as the holiday is fast approaching.

Easter is possibly the most significant event in the Christian calendar. After Jesus' death on the cross, his body was placed in a tomb before *Shabat* or Sabbath – the Jewish holy day. During the Sabbath no work could be done (that's from our Friday evening to Saturday evening). So very early in the morning on the day after, some women went to embalm his body and were the first to discover he had risen from the dead. Women, who were certainly not considered important in those days, were the first to know. Later Jesus appeared to many people including of course "doubting" Thomas. He even had breakfast on the beach with some of his disciples.

In those days, a couple of thousand years ago, there was no instant communication. No internet, no phones, no broadcasting. So messages were passed from mouth to mouth or written on clay or parchment and transferred from person to person or read out by someone like a town crier. In our days of instant news we can only wonder how long it took for word to spread.

The gospels were written many years after the events, so each of the four gospels has a slightly different story to tell about the death of Jesus and his resurrection. John tells us Mary Magdalene found the tomb empty but Matthew mentions her with another Mary, and an earthquake! Then Mark puts in another lady, Salome, but no earthquake. Luke adds a different lady, Joanna, with the other Marys.

However, the main story is the same: Jesus' body was not there. Can you imagine being a frightened disciple in a locked room when suddenly Jesus appears in the middle of your group? What a change in your thoughts, from depression to elation. John in Chapter 21 tells us of a breakfast barbeque on the beach with Jesus after he had risen. What an amazing event!

Jesus died to give us the opportunity of eternal life in heaven. He gave his disciples the challenge to go out into the world and preach the love Jesus had preached in his ministry. Jesus taught us to be peaceful, caring, to respect (and yes – to love) one another.

They didn't have the phrase "well-being" in those days, but it is probably what he aimed for us all to be. In our 21st century language we need this "well-being" state of mind. We can do this by serving others. So in our preparations for our Easter there's no need to get stressed about getting ready for the holiday, is there? I wish you the middle eastern greeting "*Shalom*" – peace and well-being at Easter.



Martin Letts

Martin Letts
Methodist Circuit Steward

Easter flowers in St Barnabas

If you would like to remember someone by giving a donation in their memory towards our Easter flowers please pop this in an envelope marked Easter Flowers or use one of the white envelopes in the basket marked Easter flowers at the back of the pews. Your contribution can be put in the wall safe near the font or popped through my door at 14, Glendale. We will do our best to decorate the church as is fitting for this special time of the church year. Thank you

Juliet Helbren

Swanmore Open Gardens Plenty to see and plants to buy

Gardens will again be open for visitors this year on April 22nd and 23rd from 1pm to 5pm. Tickets (£6, under-15s free) can be bought at the Paterson Centre from 12.30pm and teas will be available there between 2pm and 5pm with delicious home-made cakes.

Ten gardens are expected to open, some for the first time while others have been completely revamped since last opening several years ago. As in previous years, the Meon Valley Lions minibus will provide free rides to all on a route that passes close to all the gardens. There will also be plants for sale.

Swanmore gardens will be open for a second time on June 17th and 18th, between 1pm and 6pm, when at least two more gardens are expected to open.

Below: Sunny open garden in 2022.



Jill Phipps

Swanmore's loss is Shedfield and Wickham's gain

Many of you will know that Jill Phipps has been in training for ordained ministry and, bishop and God willing, will be ordained on Saturday, 24th June at 11am in the Cathedral.

It is normal practice in the Church of England for curates to serve what is called their "title post" at a church different from their home church. The bishop has decided Jill will become the curate at Shedfield and Wickham with Jane Isaac being her training incumbent.

Of course, this is sad for us but we have to see the bigger picture and look at what is right for Jill's ministry to flourish. She will still be living in the heart of the village, walking the dog and drinking coffee at Barnaby's so we won't be losing touch.

Jill will be preaching on 11th June at 10am, the day we celebrate our patronal festival, giving thanks for St Barnabas. Please come if you can and



share bubbly and cake afterwards. If you would like to contribute to an ordination present, please put donations in sealed envelopes with "Jill's present" on the front and put them in the post box in church by the font or hand them to a church member. And whatever you do – don't tell Jill!

Hazel Whitehead



SWANMORE CYGNETS

BABY & TODDLER PLAYGROUP

Come for some chatter, play, crafts, songs and snacks!

The Swanmore Cygnets baby and toddler playgroup meets every Monday during term time from 8.45am to 10.30am in the Paterson Centre.

Cost is £2 per session, which includes drinks and a snack.

Find us on 

From the Registers Funerals

28th February Robert Alfred (Bob) Harvey

14th March Serena (Lena) Hill

Activities

Great start to the year's social events

Love was certainly in the air and all around the audience and performers at the first concert by the wonderful a capella singing group Beati in January. The singing and accompanying readings were superb. Once again the church looked beautiful and complemented the music and readings to produce a deeply moving event on the theme of love. From Monteverdi to Cole Porter, Dowland to Billy Joel, it was a wonderful night to launch our 2023 programme of events. They have been invited to return next year.

More music featured in our February event. This time a super quiz with an incredibly difficult music round. Well, it was incredibly difficult for this old boy; others found it, if not easy, at least easier. The quiz was set by Sarah Woodman who organised the whole evening brilliantly with help

from husband Jon (scorer) and quizmaster Alastair Walton.

For me the evening was crowned by a feast of delicious home-made desserts provided by volunteers and I did manage to get enough of the correct answers to avoid feeling completely stupid. Another quiz has been requested for next February and it is hoped this will become an annual fixture

After the good news comes some bad: the Beetle Drive scheduled for March has had to be postponed due to unforeseen circumstances and it was decided to cancel the Royal Tea on 8th May to avoid clashing with other events taking place over the Coronation weekend. The rest of the programme remains intact as listed in the last issue of *The Swanmore Link*.

John Sharpe



Swanmore Guides

Learning new skills and having great fun

Girlguiding is a place where everyone is welcome and free to be themselves. World Thinking Day in February always sees us thinking about Guiding friends around the World and we are excited to be planning some international adventures for the next couple of years.

We had a great time with other Guides from the Meon Valley, taking over Flip Out trampoline park in Portsmouth overnight. Guides have had expert tuition in cake decorating from Mr Baker at his cake school, hunted for bats at Swanwick Lakes and have been expressing ourselves in many ways, including learning some British Sign Language.

Here's some words from the guides:

G Guides, Girls, Great, Grins

U Unique, Uniform, Universal, United, Umbrella dancing

I Imagination, Independence, International, Individuality

D Developing, Devotion, Dedication, Different, Delightful, aDventures

E Exciting, Experiences, Education, Easy, Exploration, Equality, Exploring

S Superior, Star, Sandy Acres Campsite, Satisfying, Summer, Special

From Annabel Taylor (10):
Girls around the world
United in their love of skills and nature
Independency is our goal
Delicious food around a campfire
Exciting events, places and activities
So many groups – Rainbows, Brownies, Guides

From Emily Mulchrone (10):
Girl Guides are everywhere
United in their love and kindness throughout the World

It is a lot of fun

Do lots of fun, exciting activities

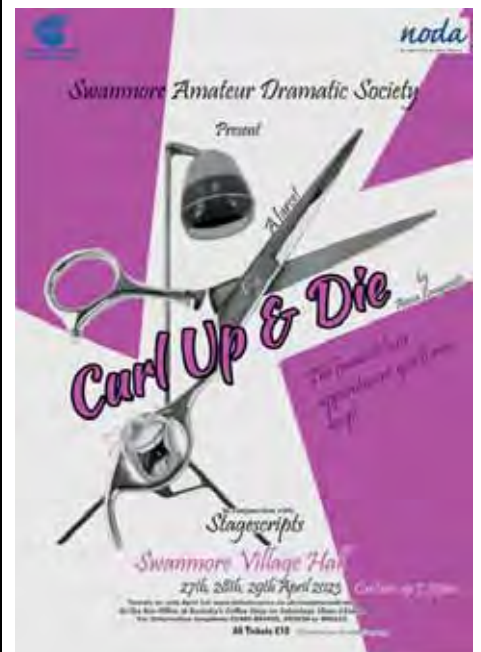
Everything is great

So it is better than Brownies and Rainbows to me as you do different activities!

We have enough Guides on the waiting list to have an extra unit in Swanmore. If you are inspired to get involved then do contact us at Swanmore-guides@hotmail.com.

Sarah Woodman

Below: The Guides went to Broadcut Sainsbury's and worked in small groups with a small budget, with a challenge to buy a family meal, toiletries and treats for people and pets. At the end of the evening our purchases were put into the food bank collection point.



SADS

The funniest hair appointment you'll ever keep

As SADS audiences always say: "It was the best one yet!" and we are in no doubt that you will be saying it again in April as SADS performs *Curl Up and Die* by Anna Longaretti.

This full-length farce will have you laughing all night long and is certainly not one to miss. It tells the story of Ruth who inherits her Aunt's antiquated hair salon; the antiquated clientele comes with it, but the weekly shampoo and sets are put on hold when Ruth decides to enter a hairdressing competition.

Performances are at 7.30pm at Swanmore Village Hall on Thursday 27th, Friday 28th and Saturday 29th April (with occasional use of strong language).

Ticket prices are all £10; bar drinks are available to buy on arrival and during the interval. Tickets are on sale from 1st April from www.ticketsource.co.uk/swanmoredrama or are available on Saturday mornings during April from 10am to 12noon next to Barnaby's Coffee Shop. If you require further information telephone 01489 894955, 893639 or 896182.

Gail Norris

Swanmore College

Getting ready for exams and exciting overseas trips

Head Boy and Head Girl

Our new Head Prefects have been elected by pupils and staff. This is quite a formal process, involving a presentation, plus interviews with Mr Jonathan (Headteacher), Miss Brown (Assistant Headteacher) and the existing Head Prefects.

We are delighted to announce that Thomas and Lyla, in Year 10, will be taking over these important roles from Adam and Erin, in Year 11. All are invited to attend the Board of Governors meeting as a thank you and acknowledgement of their contributions. Thank you to Adam and Erin for doing such a superb job over the past year and well done to all those pupils who applied for these prestigious roles.

Food donations

A huge thank you to everyone who responded to our appeal for food donations before Christmas. The contributions were truly amazing and we delivered a vast array of items to the Meon Valley Food bank. This support makes a vital difference to many families in our local area who are struggling with the rising cost of living. We will be collecting again in the not-too-distant future.

Examinations

Year 10 and Year 11 pupils have completed their final set of mock examinations for this academic year. GCSE examinations begin in May for our current Year 11 pupils.

This is an extremely important time and we work hard to ensure that our buses prioritise our Year 11 pupils' arrival at the college, pupils eat and sleep well, and are given the best possible support to succeed. We wish all of them the very best of luck!

Trips

We are proud to offer a variety of trips throughout the year and have already had some successful off-site trips this academic year. In November, 100 pupils visited the WW1 Battlefields in Belgium on a history-based excursion; we took GCSE pupils on a Science Live trip to London in December; and some of our debating club pupils spent a day touring Parliament and even met our local MP Flick Drummond.

During February half-term, 83 pupils went on our annual ski trip to Austria and we have a group of around 60 children undertaking an educational trip to Ghana in the summer to help teach at and build schools. We are also planning a

Spanish trip to Seville and a history trip to Berlin. What a great way to support our children's education and enhance their learning.

Swanfest

Our annual Swanfest Festival is taking place at Swanmore College on Saturday 17th June 2023. We have some great acts confirmed, including Artful Dodger, 911 and Toyah Wilcox, among others. Tickets are available now via www.swanfest.co.uk

Below: Visiting the Belgian battlefields. Bottom: The college group in Austria and (bottom left) enjoying the ski slopes.



Swanmore Conservation Group

Fighting litter and winter weather

Bad weather this winter meant we were unable to hold work parties in December or January although, as usual, various members of our group still did as much as they could to keep things ticking over. On days when the pond froze they broke up the ice around the edges of the pond to discourage people from venturing onto the ice. The pond ditch, inlet and outlet channels were kept clear and the litter in the pond was removed as far in as possible.

A tree that had fallen by the kissing gate on the path between Broad Lane and the Upper Meadow was removed; it had suffered from the wet weather and age and had succumbed to rot. Two volunteers also sowed wild poppy seeds and more yellow rattle, a task also delayed by the weather. Better late than never, so fingers crossed that some seeds manage to germinate.

The Parish Clerk has received several complaints about the litter in the pond from local residents and it is indeed distressing to have a seemingly endless stream of plastic bottles, crisp packets and logs thrown into the pond on an almost daily basis. Members of our group do of course remove litter if they see it near the edge of the pond but to reach some of

these items it is necessary to wear waders, and in fact some of the items have needed more than one person to retrieve them. It is distressing to see the pond treated as target practice but unless the Parish Council employed a contractor to visit daily, a really expensive option, there seems no obvious solution.

At February's work party we coppiced the shrubs and small trees at the edge of the plantation in the Upper Meadow where it backs onto Foxcombe Close, hopefully letting in more light. We continued clearing the bank in the Upper Meadow, perhaps an old hedge line or boundary. A brushcutter was used to clear the dead stems of rose bay willowherb and sedge so that the orchids can have a better chance to grow and spread in this really damp area above the "ephemeral" pond.

The Parish Council has kindly allocated money to the group so that the major work of clearing the mud that inevitably builds up in the bottom of the pond can be removed by a contractor, along with some of the huge build-up of reeds and water lilies and perhaps the majority of the goldfish if we're lucky. Hopefully this can be done later this year, in the

autumn, so that the impact on the wildlife is minimal. The Council will also apply for a grant to top up the amount they have allocated to us.

Our volunteers meet on the second Saturday every month, weather permitting. We gather at the hut in Lower Meadow at 9.45am to choose our jobs. We stop for coffee at 11am and finish work at 12noon. We are always pleased to see new faces; there is no requirement to do any particular job nor do you have to do the whole session. Please join us if you can.

Gill Sawyer, 01489 894206

Below: Large logs continue to be thrown into the pond. Bottom: Despite the litter the frogs are spawning. Bottom left: Young meadow visitors find a fox's skeleton of interest. Photographs by Peter Mason



In memoriam

Robert Alfred Harvey (1935–2023)

Bob Harvey was born in Chapel Road, Swanmore in July 1935, christened as a baby in St Barnabas Church, and sang in the choir as a child. His parents and grandparents are buried in the churchyard.

After doing National Service, Bob trained as a plumber and heating engineer and worked with his dad, who was a builder; they both worked on the church roof and Bob put in the heating system.

In 1962 Bob married Trish in the church and they had two children, Gillian and Andrew, who were also christened in church; and Gillian, too, sang in the choir.

The family moved around Swanmore throughout their lives as Bob bought properties and renovated them. Bob's wife Trish said that she knew that once the kitchen was finished they would soon be on the move again.

After the end of the war, Bob, with other people in the village, cleared the Recreation Ground for football and cricket and built the Pavilion. The football club had lots of different teams playing and raised money for charity. Bob was also a keen golfer and long-time member of Corhampton Golf Club, being Club Captain twice.

In the past couple of years, Bob suffered with ill health and was not able to be as active as he used to be.



He died peacefully at home on Friday 3rd February.

More than 150 people gathered in St Barnabas on Tuesday 28th February at 2.00pm, together with the family, to give a fond farewell to Bob, a "son of Swanmore". It was a wonderful service, which included standard bearers from the British Legion and the Royal Engineers, and a bugler playing "Sunset" as Bob left the Church. Trish, Gill, Chris and Andrew are so grateful to all who attended to celebrate Bob's life; it has given them great comfort to know how popular he was.

Jill Phipps

Meon Valley Carers Group

Offering support and entertainment

Meon Valley Carers Group meets at the Paterson Centre on the fourth Tuesday of each month. It is hosted by Judy (carer support worker), Kim and Alicia (dementia advisors), who are happy to offer advice and information. We also have a committed group of volunteers who offer support as well as tea or coffee and a biscuit.

We welcome carers and the cared for, giving you the opportunity to meet new friends, play along in a quiz and other activities and discover new

interests with regular guest speakers. We have had a successful start to the year and now look forward to meeting any carers and their loved ones who would like to join us.

In February we were joined by The Memory Box who shared their Coronation and Royalty memorabilia. while in March we held a Tai Chi session. To register with the group contact the Referrals and Enquiries Team on 01264 332297 or email: enquiries@andovermind.org.uk

Judy Beaunier

Charity event

Save the date for Shakespeare

The popular Villagers Open Air Shakespeare Group will be returning to the garden of Hill Farm House, Droxford Road, Swanmore on Saturday 22nd July. This year they are performing "The Comedy of Errors".

As usual bring your own picnic, drinks and chairs for what promises to be an entertaining evening. Tickets will be unchanged at £12 for adults and £6 for children under 16.

All proceeds will go to help the neonatal intensive care unit at Queen Alexandra Hospital and buy much needed equipment. Last year the evening and related activities resulted in a donation of £3,000 used for apnoea monitors, which check the respiratory function of newborns.

For further details and tickets when available contact me on 07803 299973 or 01489 878722.

Jenny Maunder

New Road toilet block

Vandals punished

Four teenage vandals, who trashed the toilet block at New Road Playing Field causing £1,500 worth of damage in January, were issued with community resolution orders in February. According to a police statement "the youths will need to engage with the Youth Offending Team and undertake restorative justice". The four were filmed on the site's CCTV system when they deliberately broke off pieces of cladding and destroyed baby change units and other fittings.

Royal British Legion

Fund-raising sale

The Swanmore branch of the RBL will be holding another of its popular "garage sales" on Saturday 13th May in the Paterson Centre car park from 10am to 12 noon. There'll be all sorts of items on sale, from plants and bric-a-brac to larger household and garden equipment, so do drop by and support this worthwhile cause.

Swanmore wind band

Looking for more players

Swanmore Wind Band is looking for new players and we would love to have you join us, particularly if you play flute, clarinet or trombone.

We play popular tunes and Christmas music with community performances throughout the year.

Grade 3(ish) and above under-18s are welcome when accompanied by their playing adult.

For more information about rehearsals etc. please contact ed.wright@baxterhall.com



Swanmore Lunch Club

We need you!

We need more volunteers for the various duties. These are vegetable preparation, serving and clearing tables, putting the tables and chairs out at the start and away again at the end, and most importantly washing up (there is a dishwasher).

The Lunch Club runs for the benefit of the elderly members of the village, who really enjoy being able to get together with their friends for a weekly catch-up and natter over a two-course meal followed by tea or coffee, but without the volunteers it can't operate efficiently.

If you think this is something you could do once or twice a month, please get in touch with me. The volunteers cover the hours of 11.30am to 1.30pm split into different groups; vegetable preparation is from 9.30am to 11.30am approx.

Ann Warrington

*ann.warrington@btinternet.com
01329 510667/07850 100547*

Swanmore Pre-school

Planning the nature garden

Swanmore Pre-school has a new sand play shed thanks to parents and committee who had raised the money over the Christmas period. Thank you to Mr Hiscock for building this for us along with our new planting garden, now easily accessible to all children. The new additions are proving to be very popular with the children and we are planning what to plant and grow. Future fundraising will support the development of our nature garden.

The children celebrated World Book Day in February by dressing up as their favourite book characters. We explored favourite authors and learnt about illustrators.

The next fundraising events are an Easter egg hunt on 29th March, and an adult "race night with a difference" on Friday 12th May. More information will be on our website and Facebook page. Our admissions remain full and we are no longer adding to the waiting list

for the next two years.

For more information please contact me via email: sarah.hiscock@swanmorepreschool.org.uk or telephone 01489 893779, mobile 07958 436396

Sarah Hiscock



Above: Mabon dressed as ZOG for World Book Day.

Above right: The new sand play shed. Right: Lizzie, Henry and Louis in the sand.



At our February meeting, Carol Watson returned to tell us about the West Highland Way and the Great Glen Way. She and her husband Jim are intrepid long-distance walkers, travelling by public transport to the start of the hike and carrying all they need for the journey on their backs. They pre-book accommodation so that dinner, bed and breakfast are assured at every stop. Carol remains a devotee of photographic film and produced a most-interesting talk illustrated by some wonderful colour slides.

The West Highland Way starts on the outskirts of Glasgow at Milngavie and follows a trail for 96 miles to Fort William. It is well-surfaced and waymarked, and takes about eight days at a reasonable pace. On the way, it skirts Loch Lomond, crosses the wilderness of Rannoch Moor and passes through Glen Coe, taking in a huge variety of scenery from country parks to loch shores, open moorlands to steep mountains. Carol's photographs showed us stunning landscapes, ending up with spectacular views of Ben Nevis.

Starting at the end of the West Highland Way in Fort William and ending in Inverness, the Great Glen Way provided the Watsons with a natural continuation of their journey through the Highlands. The route stretches for 80 miles from coast to coast, following the major natural fault line of the Great Glen. The Way runs along the complete lengths of Loch Lochy, Loch Oich and the forests above Loch Ness, as well as along the

Swanmore Society

Highland hiking and a look at the year ahead

towpath of the Caledonian Canal.

Carol's talk and beautiful pictures may have whetted a few appetites for fitter and more-active members to have a go themselves, at least for part of the way!

Looking ahead

Our new programme starts on 12th April with a talk by Duncan Colin-Jones on "History around Chichester Harbour", inspired by what he has seen during many years of sailing his dinghy in the area. As Duncan says: "it truly is an area of outstanding natural beauty and also an area just full of interesting history". He promises to take us on "quite a trip" round the harbour as if in his boat, showing the sights and telling the stories.

On 10th May, we will welcome Swanmore resident Angus Somerville, who is a current member and recent chair of the Independent Monitoring Board at HMP Winchester. In his talk, Angus will give an overview of imprisonment in England and explain the role and function of Independent Monitoring Boards, before describing the situation at HMP Winchester.

Our meetings are held in the Paterson Centre and start at 8pm. Visitors are always welcome.

David Street (01489 896331) and Caroline Clapperton (01489 891447)

Programme 2023/4

- 12th April: "History around Chichester harbour" by Duncan Colin-Jones
- 10th May: "Monitoring Winchester Prison – An Outsider's View of 'Inside'" by Angus Somerville
- 14th June: "Whitchurch Silk Mill – Preserving the Fabric" by Deborah Wheeler
- 12th July: "Gardening for Nature" by Craig Whitelock
- 13th September: "History of Portsmouth Part 3: Harlots, Dung and Glory" by Andrew Negus
- 11th October: "Bishop's Waltham Community First Responders" by Andrew Brown
- 8th November: "Police & Crime Commissioner – What the Role Entails" by Donna Jones
- 13th December: "Building Spitfires without a Factory" by Alan Matlock
- 14th February 2024: "The Workings of Ordnance Survey" by Jonathan Simmons

Below left: Our intrepid speaker crossing Rannoch Moor. Below: The pepper pot lighthouse at Corpach, overshadowed by Ben Nevis, on the Great Glen Way.





6th May Coronation Day

A coronation is a solemn religious ceremony rooted in the ancient belief that the ruler was divine or partially divine: the Japanese emperor, for example, was believed to be a descendant of Amaterasu, the sun goddess. If the ruler was not quite divine then he (or more rarely she) was regarded as chosen by the deity and thus ruled by “divine right” – something that applied to British kings until the seventeenth century.

Coronations were thus generally held at sacred sites – or, in the case of British monarchs, on sacred stones. In



Above: The Coronation Chair with the Stone of Scone to be used in the ceremony at Westminster Abbey.

Scotland the “Stone of Scone” was believed to have been brought from Ireland to Argyll by Fergus, the first King of the Scots (c.498–501), having previously been the “stone of destiny” used for crowning the High Kings of Ireland. It was looted by Edward I of England and brought to London in 1296.

Edward I had the stone installed in the Coronation Chair in Westminster Abbey, where it remained – apart from a few minor excursions during the Second World War and when stolen by Scottish students in 1950 – until 1996 when it was ceremoniously returned to Scotland. It is being brought back south for the King’s Coronation.

The equivalent English “Coronation Stone” was used by Anglo-Saxon kings – from at least Aethelbert (860–866) to Aethelred the Unready (979–1013) – and stood in St Mary’s church in Kingston upon Thames. The church collapsed in 1730 and the stone served as a mounting block before being set on a plinth in front of the town hall (now the Market House) in the 1850s, where it remains surrounded by railings.

Since 1066 English monarchs, and, since the political union with Scotland in 1707, British ones, have been crowned at Westminster Abbey. The church was founded by Edward the Confessor in the 1040s but the first monarch to be crowned there is believed to have been Harold Godwinson on 6th January 1066.

Exact timings for events on Coronation Day have not been announced as *The Swanmore Link* goes to press, but if the schedule is similar to Queen Elizabeth II’s Coronation in 1953 it is likely that the actual service will start at 11.15am, following a carriage procession from Buckingham Palace.

Announcements made so far suggest that it will be a rather shorter service than the late Queen’s (three hours) and the post-crowning procession will be less extensive (it took more than 90 minutes to pass places on the route).

6th–8th May



Coronation weekend

7th May Coronation Big Lunch

Sunday, 7th May has been designated for the Coronation Big Lunch, when communities are invited to get together and share food and fun. In the evening a special Coronation Concert will be staged at Windsor Castle and broadcast live by the BBC.

Swanmore's Big Lunch 7th May 11am to 3pm

Sponsored by the Parish Council, Swanmore's Big Lunch will be giving everyone in the village a chance to celebrate this momentous weekend. Swanmore Recreation Ground will be a hive of activity between 11am and 3pm, with attractions to please all the family – many of them free of charge.

The "Fun Experts" have been hired to provide some giant games – including Jenga, Connect, and Draughts – to keep you amused and there'll also be "Sports Day" activities, with sack races, egg & spoons, and space hoppers among others for all ages to take part – with plenty of prizes, of course. Chipperfields will be running a small funfair with ice creams and candy flos, as well as various rides, and there'll be mini-golf and skittles plus a balloon sculptor for the

Free tea and cake when you visit the exhibition in the Pavilion.



young ones. Swanmore Wind Band will be providing music.

At 12noon the Royal Fancy Dress Competition – for all ages – will be judged outside the Pavilion with a £25 Amazon Voucher for the winner; and if you're really pleased with your outfit there'll be a regal photo booth complete with "throne" and "crown" for you to record the event.

For those who prefer less strenuous pursuits, you can visit the Pavilion exhibition looking at how Swanmore – and our new monarch – have changed during the eight decades of our King's life, with free tea, coffee and cake for all visitors.

You can bring a picnic or there will be hot food options available, along with a "coffee and cocktails" bar and *The Rising Sun* providing plenty of beer.

There'll be small souvenirs for all visitors, so do come along and add some fun and excitement to your Coronation weekend memories.

Coronation Praise Sunday 7th May 10am at St Barnabas

Come and join us. We can't promise tiaras with diamonds, a cathedral choir or two archbishops, but we can promise some rousing singing, moving readings and some fruit cake (the King's favourite cake).

We will be thinking not only about the earthly monarchy but also about Jesus Christ, the King, and his kingdom and what it means for us to live lives of service and discipleship.

Hazel Whitehead

8th May The Big Help Out Day

Monday, 8th May has been dedicated to The Big Help Out, when everyone is encouraged to try volunteering and join the work being undertaken to support their local areas.

Come and join the litter pickers

On the Big Help Out Day I have asked the team of volunteer litter pickers to try to carry out a litter pick in the morning, with the aim of clearing up every piece of litter in the parish.

Would you like to help?

It would be a great opportunity for parents to take their children out and collect litter (plastic gloves would be needed) and reinforce the message that littering is wrong. I have a limited number of sets of equipment that I could lend to people who want to try to fill a black sack.

I am planning to collect sacks beside the Primary School for collection by Winchester City Council.

If you would like to get involved and would like more information, please give me a ring on 01489 896331 or email me on david@streetfamily.org.uk.

David Street



Review of the year

Chairman's report

This year, Councillors Nigel Sloper and Alex Graft stepped down from the Council and we welcomed Simon Campbell-Gurry and Steve Johnston, giving a full quota of ten councillors. Councillor Pete Ansty was voted in as Vice-Chairman, and the Council officers remain unchanged, with Tracey Molloy as the Council's Executive Officer, and Carol McFarland and Kate Chesters supporting as Responsible Finance Officer and Deputy Executive Officer; Gary McCulloch is our Accredited Community Safety Officer.

The Council has faced many of the same challenges as our residents this year. The cost-of-living crisis has impacted all areas of our business, with rate increases across our utilities, contractors and suppliers. With some careful budgeting we have managed to keep the Council Tax increase to 4.5% for the 2023-24 year.

Having said that, we still managed to complete several significant projects in 2022–23, including the opening of the long-awaited allotments. This project hit many hurdles along the way; to see them open and the allotment holders start work has been rewarding. We have installed new play equipment in New Road Playing Field and improved the facilities at Swanmore Recreation Ground by adapting the Pavilion to allow daytime access to an accessible toilet and baby changing facilities for users.

For me, the biggest accomplishment of the year has to be that we successfully influenced Winchester's New Local Plan process and as a result have no new housing allocation other than that allocation already planned on The Lakes.

This is a significant change from the figure of an additional 90 to 100 houses that was given to us in March 2022. We promised at the time that we would challenge that number, and having the figure reduced to zero really is an achievement.

This year we are looking forward to seeing some long-awaited road safety improvements. The Parish Council has been battling for years to see safety measures on New Road. The work of the Planning & Highways Committee in particular, to keep asking the awkward questions and challenging Hampshire County Council, has finally paid off and we hope to be able to share design plans with you soon, which will see traffic-calming measures from Spring Vale to past the College.

Finally, this year we have committed to delivering an affordable, family event to celebrate the Coronation of King Charles III. We have lots of free fun and are encouraging as many residents as possible to join us on Sunday 7th May, 11am at Swanmore Recreation Ground.

Jon Woodman

Highlights from the year

- No new housing allocation in Winchester's New Local Plan.
- Allotments opened.
- Grounds Maintenance Contract re-tendered.
- New play equipment at New Road Playing Field.
- Resurfaced the Zip Wire at New Road Playing Field.
- Resurfaced Swanmore Recreation Ground Car Park.
- Swanmore Recreation Ground accessible toilet for all users.
- AutoSpeedWatch.

In Progress

- Gravel Hill road safety improvements.
- New Road traffic calming measures.
- Mislingford/Chapel Road Junction improvements.
- Cycle path between Swanmore and Bishop's Waltham. (Joint project with Bishop's Waltham Parish Council and District Councillor Malcolm Wallace.)

Annual Meeting of the Parish

Due to unforeseen circumstances this has had to be postponed until May. Please check on the SPC website for confirmation of the date. An extended copy of this review of the year will be available on the SPC website and at the meeting,

Planning & Highways Committee

Committee Members: Cllr David Newberry (Chair), Cllr Jon Woodman (Vice-Chair), Cllr Penny Clive, Cllr Keith Gautier, Cllr Steve Johnston

The Planning and Highways Committee meets ten times a year and is kept busy with responsibilities including: commenting on planning applications; highways maintenance – in conjunction with Winchester and Hampshire Councils; road safety; footways; street lighting; and street environment. The Committee has had a busy year, particularly with the work to influence Winchester's new Local Plan for housing development across the district.

Planning

- In April 2022, the Committee organised a leaflet drop to every resident informing them of Winchester's proposals under the Local Plan to allocate an additional 90 to 100 houses to Swanmore. We ran a series of consultation drop-in events, which were very well-attended with more than 200 responses to feed back to Winchester.
- Throughout the Local Plan process the Committee has been in constant conversation with officers at Winchester, challenging our housing numbers and our position within the Settlement Hierarchy document, which put Swanmore in the same bracket as larger villages such as Wickham and Denmead. The Parish Council's view is that Swanmore is not a "sustainable



settlement", is overstretched and lacks the required facilities and infrastructure for more housing.

- We were very pleased to learn in September 2022 that we had been reclassified as an "intermediate settlement" with a lower housing allocation to be met by the planned developments at The Lakes.
- Meanwhile, the South Downs National Park Planning Authority has begun the process of reviewing its Local Plan. They have asked developers and landowners to propose possible sites for development and environmental offsetting and we are waiting for publication of the list.
- The Committee reviews all planning applications in the parish. While we may support planning applications or oppose them, we have no delegated powers from Winchester City Council or South Downs National Park to grant permission, therefore our views carry no more or less weight than any other comments.

Highways

Road safety continues to be a top priority for the Committee. During the last year we have:

- Replaced a second mobile speed sign with a smiley-face speed indicator device. We have three signs that rotate around ten locations in the village; two of them are now smiley faces. We have listened to resident feedback and hope to add further speed sign locations within the village.
- Secured the installation of an AutoSpeedWatch device on New Road, which will record speeding vehicles and can filter the data gathered, for example, to target persistent offenders.
- Purchased and installed a sign at the exit of Swanmore Business Park to encourage HGVs to turn right to deter them from travelling north up Lower Chase Road.
- Purchased an additional three plant troughs for the village centre.
- Continued to work closely with Hampshire County Council on an

Access Improvements project, which includes traffic calming build-outs on New Road and improvements to both the Spring Vale junction, and the Mislingford Road/Chapel Road junction.

Looking ahead

We will ensure that Swanmore's voice is heard within both the Winchester Local Plan process and SDNP's review of their Local Plan.

We hope to share design plans soon for the traffic-calming measures on New Road and improvements to the Mislingford Road/Chapel Road junction. We are keen to smarten up the village centre and are recruiting a person to help with maintenance and cleaning tasks. We hope to install village information posts about the history of our village.

Open Spaces & Amenities Committee

Committee Members: Cllr Chris Newhouse (Vice Chair) Cllr Pete Ansty, Cllr Andy Rankine, Cllr Richard Ladd-Jones

The Swanmore Parish Open Spaces and Amenities (OS&A) Committee is responsible for supporting the quality of life within Swanmore parish by maintaining and developing key recreational facilities and amenities including:

- Sports facilities: football pitches, Multi Use Games Area (MUGA), Pump track and skate park.
- Recreational facilities: play equipment and areas, open spaces, meadows and Green's Wood.
- Local amenities: car parks, benches, litter/dog bins, and some village signage.
- Allotments.
- Rights of Way paths in conjunction with Hampshire County Council.
- The environment: tree maintenance, tree and habitat surveys, hedges and ditches, gates and fences, ponds and

Parish Council Office

Tracey Molloy
Executive Officer
Hollythorns House, New Road
Swanmore, SO32 2NW
Tel: 01489 890651
Email: clerk@swanmorepc.org.uk
Web: www.swanmorepc.org.uk

PUBLIC OPENING TIMES WEEKDAYS 10am-2pm

Please contact us by email, letter or phone, or visit us at the office.

footpaths and all other environmental issues.

The OS&A committee is always busy with plenty of ongoing maintenance to ensure that all Parish facilities are safe and well-maintained. However, every year the Committee also looks at what improvements can be made to make the village a better place in which to live. Improvements this year include:

- The biggest achievement was opening the Allotments in May 2022. This had been a long and challenging journey, so to see the gates open and our first phase of allotment holders get stuck in straight away was rewarding.
- Three new pieces of play equipment were installed at New Road Playing Field. The old equipment was replaced with a toddler play unit, which is also accessible for wheelchair users; a play unit for five-year-olds and ►

SPC Meeting Dates

Council meetings are open to the public and are held in the Parish Office, usually starting at 7pm

11th April – Planning & Highways Committee

18th April – Open Spaces & Amenities Committee

25th April – Finance Committee

2nd May – Planning & Highways Committee

16th May – AGM Full Council

23rd May – Open Spaces & Amenities Committee

Please contact the Parish Office if you would like more information.

above; and boulder-climbing blocks for older ones and adults.

- These units were installed following consultation with the village that highlighted a lack of facilities for both younger and older children who don't necessarily want to ride a scooter or skate. We also had excellent disabled-changing/toilet facilities but no inclusive play equipment.
- The Pavilion at Swanmore Recreation Ground was adapted to include daytime availability of an accessible toilet and baby-changing facilities.
- The car park at Swanmore Recreation Ground was resurfaced.
- A formal tender process for two new grounds maintenance contracts ran across the year. We are looking forward to working with Shawyers from 1st April 2023.
- We are working closely with Swanmore Conservation group, including providing funding for tools and equipment, so that they can continue to help improve the woodland and meadows.

Looking ahead

- The play equipment in Swanmore Recreation Ground is coming to the end of its life, and plans are in place to apply for further developer fund and grants to rejuvenate that play equipment as well as look at other areas in the village that would benefit from play equipment, such as Medicott Way and the Village Hall.
- The Committee has committed to improving the village pond on Broad Lane. The Conservation Group has flagged that it needs specialist work, so money has been put aside to complete this project.
- Phase 2 of the allotments is being planned, with additional plots, fencing and facilities all considered. The next phase of works will be reliant on successful grant applications due to the considerable costs involved.

Local elections

Photo ID will be essential if you want to vote in person

For the elections on 4th May you must take photo ID with you to the polling station otherwise you will not be able to vote. Acceptable photo ID includes:

- a passport,
- a driving licence,
- a relevant bus pass/travel card,
- a Blue Badge,
- a PASS card,
- EEA or MoD identity card or
- a biometric immigration document.

The photo ID must be an original – photocopies will not be accepted – and it doesn't matter if it is out of date so, for example, an old passport would be fine as long as the photograph is still recognisable as you.

Anyone without the necessary documentation can apply for a free Voter Authority Certificate. This is a new document that Electoral Registration Officers (ERO) will provide, free of charge, to any eligible elector who applies for one. You can apply for a Voter Authority Certificate online, by paper application form or in person but the **deadline to apply for one in time for the local elections is 5pm on 25th April.**

The easiest way is to apply online at <http://voter-authority-certificate.service.gov.uk> but you will need to upload a digital photograph of yourself.

If you are unable to provide a digital photograph you can attach a physical photograph to a paper application form or make an appointment to complete your application in person where a photo will be taken for you.

You can download and print the online form or you can have one posted to you by contacting: email – ereg@winchester.gov.uk or telephone 01962 848125.

To return the completed form you can:

- Scan as a PDF and email to ereg@winchester.gov.uk
- Post the form using the freepost

address Electoral Services Unit, Freepost RTLH-LSAG-HASX. City Office, Colebrook Street, Winchester, Hants, SO23 9ZZ.

- Hand the form in at the council's reception desk at the City Offices in Colebrook Street, Winchester SO23 9LJ, which is open between 9am and 4pm, Monday to Friday or post it in the post box there.

You can also request an appointment to complete your application with one of the council team at the City Offices.

Help will also be available to check hardcopy application forms and to take free photos where needed. Email ereg@winchester.gov.uk or phone 01962 848125 to make an appointment.

Obviously photo ID is not needed if you vote by post.

Meon Valley Heartstart Can you help us?

Meon Valley Heartstart, which runs free sessions teaching adults and children emergency life saving skills, keeping someone alive and safe until professional help arrives, needs some extra help.

Just a handful of hours' help a month, day or evening, in any of the following areas would be so welcome. We need:

- Assistants at training sessions; displaying information and welcoming those attending.
- Instructors – people with emergency medical experience.
- Fundraisers to help at occasional events, such as fêtes, and to promote our free training sessions.
- Marketing – help from home.

If you feel you can help in any way please contact David on email: info@heartstartmeonvalley.co.uk, or 07730 148920, or visit www.heartstartmeonvalley.co.uk

Local walks

From Bishop's Waltham via Dundridge and Dean

This circular walk starts in the town but soon moves to fields and country lanes. Distance: 5.2 miles/8.4 km.

Time: 2½ hours at a leisurely pace.

Terrain

This route is pleasant, easy walking through fields and a nature reserve, returning along quiet country lanes and tracks. There is some urban walking to start and finish but you are soon in the countryside. There is one fairly steep hill out of Dean. Sections of this walk can be muddy after a lot of rain.

Directions

There is usually parking space in Station Road at the back of the pond by the mill. The walk starts at the Station Roundabout in Bishop's Waltham.

1. Station roundabout to Dundridge Lane

Making for the church, you can either go to the Square and up the High Street or follow a more scenic route across the B2177 onto the B3035 Corhampton road. Take a path to the right opposite Langton Road, across the bridge over the north pond into the end of St Bonnet Drive. Go straight ahead turning right onto a path which comes out in Lower Lane car park. From there walk up Bank Steet and into St Peter's Street.

Go past the church door to the north exit from the churchyard and out to Free Street. Turn left and then right

into Colville Drive. Follow Colville Drive, past Rareridge Lane, turning right at the end. Follow the road then a footpath along the back of houses until you reach a kissing gate. This is where the walk starts to get interesting.

Go diagonally right across the field to a kissing gate, then follow the fence line on the left to a gap in the hedge. Go through a kissing gate into the Dundridge Valley nature reserve. Turn right and look for a path going diagonally to the left fairly steeply downhill to a kissing gate in the hedge line. (There is also a seat, just beyond the path, very well positioned, overlooking the Dundridge valley where you may wish to rest and take in the view.)

From the kissing gate, the path divides. Follow the path to the right along the meadow parallel to the Woodland Trust's Runny Down Copse. Cross a path from the nature reserve to Dundridge Lane keeping close to the boundary of the woodland. Pass a





Left: St Peter's Church, Bishop's Waltham.

stable block on your left and continue along the path to Dundry Lane.

2. Dundry Lane to Dean

Turn right into Dundry Lane and, after 200 yards, turn left along a footpath with a hedge on your right.

If you are very thirsty and The Hampshire Bowman is open, you can continue along the lane instead of going up the field. From the pub, continue along the lane until you meet the path.

Go up the side of the field and pass through a gap in the hedge into the next field and bear left. Go through a gap in the hedge and continue north-east across a large field making for Galley Down woods. When you reach the woods bear right and follow the edge of the wood down to Dundry Lane.

This path can be covered by crops in late summer, but it is possible to walk around the edge of the field, turning right along the hedge line to the corner of the field. and then left.

On meeting Dundry Lane, turn immediately left onto a bridleway beside a field. This can get muddy in places. The path forks after 300 yards. Continue to the left on the bridleway beside the field, then uphill through a wood to a road (B3035). Cross the

road and walk down Limekiln Lane into Dean. See if you can spot a trig. point in a rather unusual position on the way down.

3. Dean back to Bishop's Waltham

When you reach Dean Lane, go straight across onto a public footpath on a track up to a stables. After the stable buildings, take the stile on the left then cross the section of open field ahead to pick up a hedgerow on your left. Follow the field edge uphill, occasionally stopping to look back at the view.

At the top, join a path coming in

from the right and go through a hedge line and turn left onto a track. The track ends at Little Ashton Lane. Continue straight ahead for 200 yards until the lane turns right. Take the footpath straight ahead and continue beside a field to some houses and onto their access road leading to Beeches Hill.

This path is quite narrow and can be encroached by the hedge in summer. Cross Beeches Hill onto a footpath that climbs to the left behind houses and then turns right up a hill to meet Shipcote Lane where you turn left.

(An alternative using roads is to continue up Little Ashton Lane, turn left onto Beeches Hill and, within a few yards, bear right into Shipcote Lane.)

Continue along Shipcote Lane until it ends at Vernon Hill. Go straight across onto a bridleway, past several paths to left and right and a vineyard until, after ½ mile, you come to some houses on your right across a green.

Continue on the path until you reach Langton Road. Go across the road and pick up the path again across a green. This leads into Ponds Lane and Winchester Road by the petrol station.

David Street

Below: The Hampshire Bowman, Dundry.





Swanmore Park Cricket Club

When the “gentlemen” held the ground

Swanmore Park Cricket Club was founded by a group of gentlemen at the original Swanmore House on 21st October 1873 and initially used a ground that was close to the present building.

We are fortunate to have both the original minute book of the club together with a rule book dated 1875 in the village archives. In those days many country estates had their own cricket teams – it was the mark of a social gentleman who had probably developed a love of the sport during schooldays. Swanmore Park was rather late in establishing its own club: by 1873 Preshaw, Corhampton and Cranbury Park had all had teams for many years.

Committee members at Swanmore’s initial meeting included Bettesworth Pitt Shearer (owner of the Swanmore House estate), the Revd Walter Medicott (Vicar of Swanmore) and Charles Richards Gunner (a solicitor and director of the family bank in Bishop’s Waltham, who was secretary for the first year. The meeting agreed a set of rules and set the annual subscription at one sovereign a year and ten shillings for non-playing members (i.e. £1 and 50p).

Members were admitted by ballot

and one black ball in five would exclude the applicant. Any member misbehaving was to be subject to expulsion by a majority vote. The club met for practice every Monday at three o’clock, when any gentleman introduced was eligible to play.

Inevitably the club was only open to gentlemen of standing: local landowners such as Richard Goodlad of Hill Place, Major-General Robert Raikes of Holywell and John Carpenter Garnier MP of Rookesbury Park. The military were also well represented since Hampshire was home to the main army and naval bases and the Duke of Wellington had issued an edict that all military establishments should have a cricket pitch.

Play begins

In its first season (1874) the club played 13 matches – including against Winchester and Portsmouth Garrisons – winning seven, losing five and drawing one.

There were 14 matches the following year including aways with Winchester Garrison (at St Cross), Portsmouth Garrison (at Cosham), Priory Park (Chichester), Havant and with the Gentlemen of Dorset at Sherborne. For the 1876 season

Lyndhurst and the 21st Fusiliers were added to the fixtures list.

The minute book also shows a plan of the Swanmore Park ground with measurements and an area for pavilions. The accounts for 1876 show an income of £82 12s 2d (£82.61), the most expensive item being £11 9s 6d (£11.47½). for ground maintenance. In the same year the Revd Medicott played three innings, scoring a total of nine runs; the club president and secretary – Thomas Henry Wilson – did rather better, scoring a total of 109 runs over nine innings (giving him a batting average of 12.1).

Matches were very much social occasions for those invited to attend. By the 1880s there were more than 90 members – although rarely more than 25 ever played in matches. Members also came from far beyond Swanmore. Newcomers included: Admiral Murray Aynesley (Wickham), W Fenwick (Rifle Brigade, Winchester), Ernest Gunner (brother of Charles – Bishop’s Waltham), General Travers (Upham), The Earl of Northesk (Longwood House, Owslebury), Sir Stephen Hill (Droxford), Charles Barrett (73rd Regiment) and W. Ekins (Bishop’s Sutton).

Bettesworth Shearer, one of the club’s founders, had inherited the property and redeveloped Swanmore House and grounds in the 1830s but in 1877 he moved to East Molesey in Surrey and the estate was sold to Charles Myers, a director of the White Star Shipping Line. He had the house

demolished and brought in Alfred Waterhouse to design a large, neo-Tudor building. Waterhouse was one of the most eminent architects of the day and a fellow Liverpudlian. His designs included Manchester Town Hall, the Natural History Museum and Girton College, Cambridge.

Support from the new owner

Charles Myers was supportive of the Club and is listed as a member in 1878, but he didn't particularly like the cricket ground where it was. At the Cricket Club meeting on 1st December 1877 a letter from him was read out:

"I was at Swanmore last Friday and went over to the Property. I think the Cricket Ground is too near the House and will be too immediately in front of the new one, to be agreeable to me. There is however a place in the Park which I hope may answer equally well. I pointed out the spot to my Agent Mr Smith, and if you will write to him he will meet you and explain my views more fully than I can at this distance. In the meantime the Club can use the present ground. Any suggestions you may wish to make to Mr Smith will be thankfully received and I think the question may be arranged to the satisfaction of all parties. I shall be pleased to know what it cost the Club to make the present ground."

The committee promptly accepted Mr Myers' offer and the ground was moved further away from the new house closer to South Lodge and near



Swanmore House c.1911.

the area now occupied by Pavilion Farm. There were other issues: on the 26th March 1879 the secretary stated that he was sorry to have to call the particular attention of members to the large amount still owing due to unpaid subscriptions.

Rather more encouraging, on the 7th April 1879 a vote of thanks was accorded to Mr Myers "...for kindly allowing the club to have the use of the Park during the past and coming years, also for providing accommodation for horses on match days and for having so liberally and handsomely made a new ground for the club at his own expense".

Mr Myers was rather less pleased about some other aspects though. On 5th June 1879 he wrote to the Cricket Club again:

*My Dear Sir,
I was at Swanmore yesterday and*

from what I saw and heard it appears that the Caterer to the Club sells indiscriminately drink to anyone who asks for it. This I cannot sanction, especially now, while I have some two hundred men working for me. I request you will abate this evil and allow the Caterer to sell to the members of the Club and the gentlemen they are playing with only.

*I am my dear Sir Yours truly
Charles Myers*

Sadly Charles Myers died in September 1879 at the early age of 52. His son William Myers inherited the estate, continued building the new house and cricket continued as usual. In 1880 William Myers provided a light fence to enclose the new ground, had the pavilion moved and changing rooms added.

Charles Richards Gunner (1853–1924) played rugby union for England in 1875 and once played cricket for Hampshire (against Derbyshire in 1878).

He trained as a solicitor and was a director of the family bank in Bishop's Waltham. He had nine children with his wife Jessie Mason, including seven sons of whom three were killed in the First World War, one died in infancy, another while at school and a third while serving with the army in India in 1910. There is a memorial to them in St Barnabas' church.

The family lived at Swanmore Cottage (now Swanmore Lodge) from c.1886–1897 before Charles built Ridgemedede in Bishop's Waltham.



Reaching a compromise

The Club's caterer was less than pleased about the restrictions on sales and "declined to have anything to do with the matter". Various publicans similarly declined "on account of the distance" and – after presumably some serious negotiations – the original caterer agreed to continue with an agreement that "liquor might be supplied to everybody on the Ground on the condition that sobriety and order be strictly observed".

One of the suppliers of refreshments was the White Swan Inn at Bank Street, Bishop's Waltham,

where Friends Indian restaurant is now. The grandfather of Vera Tribbeck, a current Swanmore resident, was the proprietor of the pub and her father was born there.

Generally cricket scores for teams were low, often under 100 runs. Swanmore needed to improve their performance and in the 1877 season they announced that “Flanagan of Lord’s cricket ground will attend at Swanmore for practice on Monday 9th, 16th, and 23rd of April at two o’clock”.

The batsmen’s average scores were generally fewer than 10 runs per game with batting averages in single figures. In 1879, for example, only three players averaged 20 or more runs during the season’s 15 matches, while eleven players averaged five or fewer. Occasionally players had higher scores, but these were often guests drafted in to bolster the side. These guests were not always “gentlemen” and are listed in the records by surname only – such as “Foxwell” who played with the club for two seasons, achieving more than 50 runs in some innings (batting average 18.1).

The beginning of the end

At the committee meeting on 2nd of April 1883 Thomas Wilson resigned as secretary, a post he had held since 1875, but there were no volunteers to take over so a crisis meeting was planned for “28th instant at Swanmore House” when the committee members decided to share the task of organising matches between themselves as no-one wanted to be secretary.

They did, however, appoint “Judd” as the “professional”, paying him 25 shillings (£1.25) a week and if he were not required on the ground he had “the privilege of having one or two days a week to play outside”. That year Judd managed

a batting average 9.1 runs.

The minutes of the meeting of 30th June 1883 contain some interesting information regarding Swanmore Village Cricket Club who requested to play their matches on the Swanmore Park ground. Agreement was eventually reached that on payment of £1 per match they could use both the ground and pavilion.

Despite Judd’s appointment and the previous efforts of “Flanagan” the standard of play did not improve since only one player averaged more than 20 runs per innings for the season. Home and away opponents included Stubbington House, Winchester, Fareham, Worthy Park, South Hants, Royal Marines, Netley and Royal Artillery.

There was still no Club secretary, and at the meeting on 7th February 1885 B T Hewitt, who had been treasurer since the club started, also resigned. The Club had been running at a loss for several years and appeals to members to pay their subscription were clearly ignored by many. Since there were no volunteers to take over as secretary or treasurer Thomas Wilson proposed that the club be dissolved.

A month later at a meeting held in Charles Gunner’s house in Bishop’s

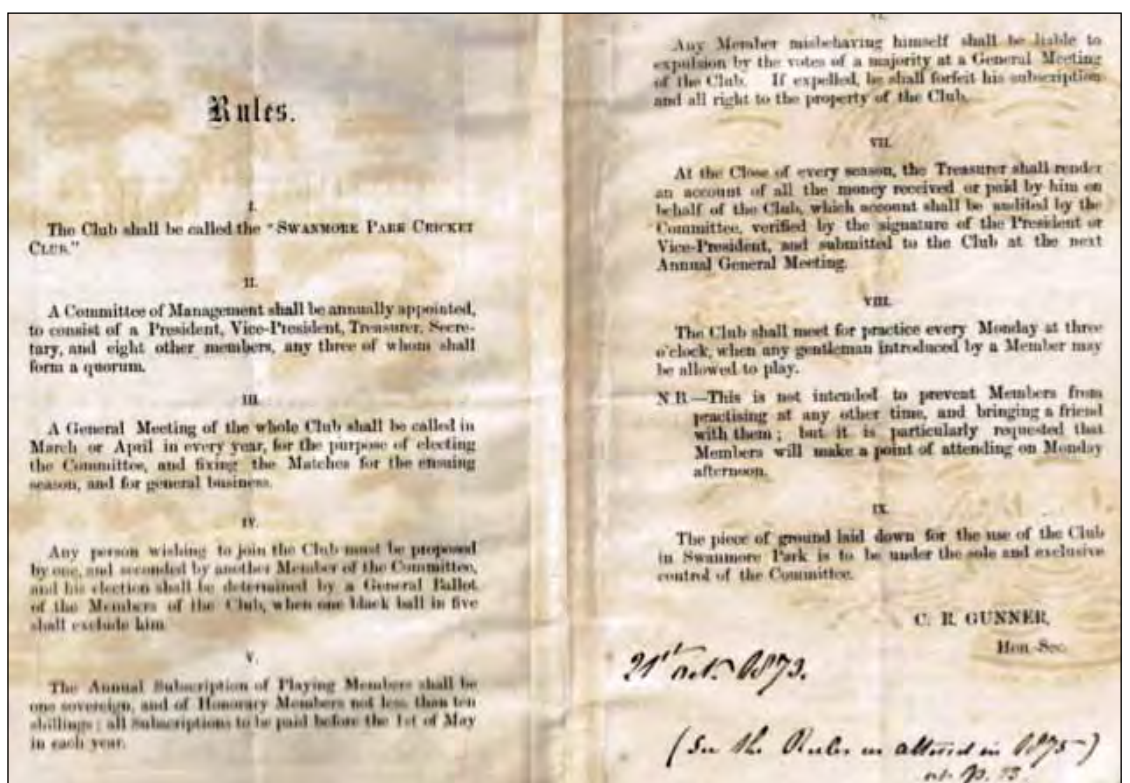
Waltham, the decision was confirmed: as the annual report to members put it later in the month “...with feelings of considerable regret it was resolved that, as no gentleman can be found to undertake the duties of Secretary, the Club should be dissolved, which is much to be deplored by all lovers of cricket”.

Disposing of assets

The club’s various assets were either returned to their original owners, given away or sold, with any proceeds going to Shedfield Cottage Hospital. The “horse mowing machine and horse boots” were to be presented to Hampshire County Cricket Club and remaining articles to be divided between the cricket clubs at Swanmore, Bishop’s Waltham and Corhampton.

There was at least one redeeming feature from the closure of Swanmore Park Cricket Club in that Charles Gunner, who later built Ridgemedede, laid the foundations of Bishop’s Waltham Cricket Club, formed in August 1888, with a clear organisation and rule book. For some years this club used both the Swanmore Park cricket ground and its pavilion.

Crawford Wright



In the hedgerows

Despite the name don't give it to your dog!

If you wander in old woodlands at this time of year there is a good chance you'll come across a clump of plants, maybe 25cm/10in high, with bright green, pointed, oval-shaped leaves up to 8cm/3in long with toothed edges, growing from a single stem. If there is little obvious sign of any flowers and quite possibly a slightly unpleasant smell, then there is a good chance that you have stumbled upon a patch of dog's mercury.

The plant has nothing to do with dog's and even less with mercury but it is a good indicator of ancient woodland – or where an ancient wood once stood, which is why you can find it in our hedgerows. Although nowadays it is known to be highly toxic it was once a widely-used medicinal plant and credited with various magical properties.

Unusually, dog's mercury (*Mercurialis perennis*) produces separate male and female plants, which is called dioecious. The males have little clusters of petal-free flowers producing pollen-bearing stamens, while the females have single green flowers – also without petals – on stalks from the main stem. Sometimes patches of the plant in woodland appear to be all male or all female – which might explain why it often spreads via its rhizomes to create large, dense carpets.

Dog's mercury has a less noxious annual cousin (*Mercurialis annua*), also known as French mercury, which can be a troublesome garden weed. It tends to be rather taller, with branched stems and has small fibrous roots rather than a rhizome. Old herbals tended to regard the two plants as having the same properties.

Back in around 400BC Hippocrates had numerous uses for the mercuries, including as pessaries for uterine

problems, in decoctions for constipation or fevers, as ear drops, ointments or as poultices for eye problems.

Choose your gender

A belief that certainly dates back to Pliny and was repeated by Nicholas Culpeper in his herbal of 1652 was that if, immediately after conception, a woman was given the juice of the female mercury or the leaves mixed with corn to create a sort of porridge, then she would give birth to a girl, whereas if the male plant was used instead she would have a boy.

Since eating the fresh plant can cause nausea, vomiting, jaundice, convulsions and (rarely) death – it is not a practice to be recommended. Heating or drying the plant is said to reduce its toxicity, so perhaps generations of women trying this method didn't suffer too much. The most recent case of dog's mercury poisoning was reported in the *British Medical Journal* in 1983: a couple foraged the leaves thinking them edible but fortunately boiled their harvest before eating. They were hospitalised for two days but recovered without lasting ill effects.

Dog's mercury was also reputedly an ingredient in mediæval witches' flying ointment – a hallucinogenic mix (including deadly nightshade and monkshood, also both poisonous) that created the illusion of flying.

Discovered by a god

The Greeks called the plant "Hermes' grass", believing that it had been discovered by the god, so the Romans named it after their equivalent deity, Mercury – hence *Mercurialis* – while some suggest that the smell of the plant attracts dogs

who may then try to eat it (and are thus poisoned...).

A totally unrelated plant, Good-King-Henry (*Blitum bonus-henricus*), which looks slightly similar when the plants first emerge, but is perfectly edible (use it like spinach), was also known as English mercury and some say that adding the epithet "dog's" to "mercury" implied that unlike Good-King-Henry this plant was inedible.

This theory seems questionable as Culpeper called *M. perennis* "dog's mercury" and maintained that it had the same properties as the annual species: "...although it be less used, yet may serve in the same manner to the same purpose to purge waterish and melancholy humours". Writing in 1597, John Gerard takes the same view, saying that: "...it is thought this kinde of mercurie agrees as in nature and qualitie with the other kind...with a clensing facultie and a digesting quality also". Neither author hints that the plant is toxic.

However it acquired its name, dog's mercury remains one to admire in woodland, but certainly not one to forage.



Top: Female dog's mercury plant with its single flower. Above: Male plant with flower stems.

Buglife

The Meon Valley miners

The Meon Valley isn't exactly known for its mining community. Truth be known there probably isn't much worth extracting, although my garden is an excellent source of flints and clay, if anyone requires supplies. However, mining is definitely operational in Swanmore, albeit very small scale. Every spring and summer tiny holes and loose mounds of soil appear in lawns, footpaths and sunny banks. These are the nesting aggregations of mining bees.

There are about 70 types of mining bee in the UK, mainly species of *Andrena*, *Colletes* and *Lasioglossum*. They range in length from 5–17mm, so tend to be rather smaller than the better-known bumblebees and honey bees. They are part of the solitary group of bees where each female builds a separate burrow rather than living in a social colony, although many species cluster their burrows together, giving the appearance of being social.

Once the females have mated with the skinnier males, they fuel up with nectar and set to work digging the burrows, using their strong mandibles to loosen the soil and their legs to shovel it out of the way, often into mounds like mini-volcanoes. They will then lay eggs in the excavated brood chambers and provision them with pollen. This is when the females appear to have swollen yellow back legs, as the pollen brush (the very hairy upper section of the hind legs)

becomes laden with pollen. If they have not been parasitised by small wasp species, bee-flies (*Bombylius* species) or other bees (*Nomada* species), the larvae will develop into adults and emerge either later in the same year for a second brood, or the following year, depending on the particular species and the weather conditions.

Some gardeners are not best pleased when their perfect lawn becomes pock-marked by tiny holes and mini-volcanoes, but the resultant aeration of the soil and the useful pollination services provided by the bees must surely mean the benefits outweigh the drawbacks. They do not sting, either. Many bee populations are now under threat due to loss of habitat and over-use of insecticides so, to coin a phrase, give bees a chance!

Marcus Charig



1 & 2. Female *Adrena fulva*.
3. Male *Adrena fulva*.
4. Mining bee burrows in a path.



Seen and heard

The early bird catches the worm

With winter melting away and spring underway you may notice little flurries of activity around your garden.

A small number of brave garden birds were already preparing for breeding in March, while others may even have started laying their eggs, flying in the face of their species' normal nesting patterns. Early nesting is a risky move, but every year a daring few throw caution to the wind and get started well ahead of time.

So, why take such a risk? Well, the earlier that birds start to breed, the more offspring they can produce in a season. Typically, it will be older, more mature birds that attempt this tactic, as they have the necessary experience to overcoming the challenges.

Some species, however, nest early in the year as a matter of course. Rooks and carrion crows, for example, had eggs in the nest by mid-March. One reason for this is the early bird really does catch the worm; it is much easier to find earth worms in March when the soil is damp than later in the year when the ground becomes warmer and drier.

The long-tailed tit is another early breeder. It is essential they get an early start as long-tailed tits take three weeks to build what is perhaps the most labour-intensive nest in Britain: soft domes made from thousands of pieces of moss, glued together with strands of sticky cobweb. Lichen fragments are then sprinkled on to create a protective camouflage, before the nest is lined with feathers for warmth to create a cosy home.

The demands of building a nest, laying eggs and rearing young are enormous, and a bird must be in peak physical condition to succeed. You can give local birds a helping hand by providing them with protein-rich food such as dried mealworms. Find out more ways to help wildlife by visiting the Hampshire & Isle of Wight Wildlife Trust website at hiwwt.org.uk

Jake Kendall-Ashton

From our district councillors

Saving energy, local plan, garden waste, and photo ID

Writing this on 8th March I can see that Swanmore's winter is now upon us – shortly after the first day of the "meteorological spring". Today we can see snow outside; quite a contrast from the first week of March, and not a good sign for those struggling with heating bills.

Perhaps now is a good time to think about upgrading your home with extra insulation and "draught proofing". The more that you can do, the lower will be your energy bills. Other options include drawing the curtains in the early evening and using as few lights as safety permits.

Can you invest in solar panels for your roof? There are two types – those that produce electricity, and those that heat hot water. Two additional alternatives are "air source" and "ground source" heat pumps. The cost of these depends on the size of your house or bungalow but can be comparatively high – the former from about £8,000, while the latter start at about £11,000. Some also claim that the fans in them tend to be a little noisy!

Grants are available from various sources. The City Council website quotes some and WinACC others. The newspapers and the internet are also useful sources of information.

No surprises in the Plan

So far as Central Meon Valley is concerned there are no surprises in the proposed Winchester Local Plan. The only developments will be the completion of the sites that were already designated in the current plan. That is, completion of the two sites opposite Swanmore College in Swanmore and Morgan's Yard in Waltham Chase. The former has been before the Planning Committee, so we know what to expect. There is still an on-going debate about the number of houses and workplaces there will be on Morgan's Yard so that has not yet

come before Planning. We are told that the most recent application for Morgan's Yard is for 80 or so houses.

The only other building in the villages will be what are called "windfall sites", where a house with a large garden is sold and the site is then developed.

The villages in the rest of the Ward are in the South Downs National Park and they have not reached the stage where development sites will be chosen. Wherever they are, they are unlikely to be large.

Time to pay for brown bins

It is time to remind you all that the fee to cover green garden waste collection (brown bin) is now overdue for the year to February 2024. The annual fee is £65 for the standard size bin, and £43 for the smaller bin.

As with the previous year there is a "sticker" for your bin, so the collection crews know if you have paid. Payments can be paid via the City Council website at winchester.gov.uk under Council Services.

Don't forget the photo ID

From May 2023 onwards photo ID will be needed at polling stations when voting and the same will apply at the General Election scheduled for 2024. Acceptable ID includes:

- a passport, or
- a driving licence, or
- Senior Citizen's Bus Pass, or
- an immigration document, or
- a PASS card used by young people to establish their age.

In fact, many other official documents that have a photograph that is clearly you, even an old passport, can also be acceptable. If the "Presiding Officer" in the Polling Station feels there is reasonable doubt that the ID does not look like the elector or suspects that the document is forged, then you will not be given a



ballot paper. A refusal is final and may not be questioned in any way. Special arrangements will be in place if, for cultural reasons, you wear a burka, or other "face covering".

Southern Water says sorry

Southern Water is "full of apologies" for their very poor performance in January/February. Those that receive their water from Otterbourne had no water for several days and the bottled water supply was very difficult especially for many elderly people.

To compound the problem there were many sewerage leaks e.g. Hambledon, Colden Common and Winchester High Street.

Our Winchester District Councillors

- Frank Pearson 01489 892822 – fpearson@winchester.gov.uk
- Malcolm Wallace 07739 050224 mwallace@winchester.gov.uk
- Vicki Weston 01329 835161 – vweston@winchester.gov.uk



Frank Pearson



Malcolm Wallace



Vicki Weston

NB: These could change after 4th May.

Meon Valley Bowling Club

Come and have a go at the Open Day



All is prepared for our annual Public Open Day and we are looking forward to welcoming everyone of all ages on Saturday 22nd April to come and have a go at lawn bowls.

To provide a quality experience of one hour's duration, a booking system is necessary with allocated time slots for members of the public. These are on a first come, first served basis. Booking opens on 10th April and to book your place please telephone 01489 896194.

The Open Day provides an opportunity to meet club members, look round our lovely Pavilion at Priory Park, Bishop's Waltham and explore the facilities our friendly club offers. Our qualified coaching team will be on hand to introduce you to our sport and encourage you to enrol for our highly successful beginners course.

Affiliated to Bowls England, Bowls Hampshire, Southampton and District Men's and Women's Bowling Associations, we enjoy competitive league and friendly bowling against local clubs and have produced both County and District Champions in recent years.

Our members have enjoyed a busy and competitive winter season. We have entertained many clubs from all over Hampshire and our internal

competitions have been keenly contested. Our Bowling Green staff have also been busy preparing the green for the outdoor season, as well as laying new paving stones and irrigation pipes where repairs have been necessary.

Once again, we shall be hosting teams in both the Southampton and District Men's and Ladies' Leagues. Our Annual Open Rinks Tournament will take place on 28th May, when we look forward to entertaining teams from across Hampshire for this popular competition. This event has been generously sponsored by a number of local businesses to whom we offer our sincere thanks for their support.

In addition to playing bowls, our Social Committee has a programme of events throughout the year to enable members to meet socially, make new friends and enjoy all that our bar and catering facilities can offer.

Bowls is not just a game – it's where friendships are formed. For further information visit our website at <https://meonvalleybowlingclub.chessck.co.uk/>

John Gray

Below: Meon Valley bowlers in action at an Open Day.



BW Town Team

Book your tickets to sample "Bites!"

Bishop's Waltham Town Team has been running its popular "Bites!" event twice yearly for several years and it will next be taking place on Saturday 22nd April. Participating outlets in the town offer ticket holders a taster of their food and drink offerings between 11am and 3pm.

Tickets (£8), which tend to sell quickly, are available from the end of March at Sweet Corner and Any Fish which are both taking part along with Giorgio's, The Crown Inn, Waltham Tandoori, Hoxton Bakehouse and No 60 Coffee & Wine Bar.

Tickets are limited to 125 in total a. For nMoe information is available at www.lovebishopsaltham.com for.

Robin Shepherd

Waltham Priory Probus An enjoyable monthly lunch

Guest speaker at the latest Waltham Priory Probus Club meeting was Paul Chamberlain, who gave a most interesting talk about "French Prisoners of War in Hampshire". This had great relevance to our part of the county and was much enjoyed. The talk was followed by lunch and coffee.

Waltham Priory Probus is a mixed club of men and women. We are friendly, welcoming and able to accept some new members at present. We have some good speakers lined up followed by lunch and meet on the first Tuesday morning of every month in Botley.

Please contact our secretary on phone number 01489 783386 or email contact janet.gibson1@outlook.com for details.

Martin Cooke

BW Rotary Club

Helping out with the youth club

For many years we have supported Bishop's Waltham Youth Club by helping them with numerous projects, from financing such things as furniture and a chill-out space, to helping repaint the outside of their present clubhouse.

Recently we were approached regarding their plans to expand their age group and to start a club for younger children in the nine to eleven-year old age bracket.

We were more than happy to finance the materials needed to start this new club, which meets on the second Monday of every month from 6pm to 7.30pm in the Youth Hall.

Dates for your diary

Plans are now complete for our Charity Golf Day on 27th April at East Horton Golf Club in Fair Oak in support of the Rotary Foundation Charity, Friends of In Touch in Fair Oak and Mountbatten Hospice in West End.

This is planned as a fun day, starting with tea, coffee and bacon rolls at 8am; a shotgun start four ball competition at 9am on the East Horton championship standard Greenwood Course with a refreshment buggy, followed by lunch and prize giving at 2pm in the Greenwood Room. Team entry is £300 for a four ball. For bookings call 07748 943919 or email sara.walker@bishopswalthamrotary.org.uk

We are also now in full planning mode for the main event of our fundraising year, our annual, and eagerly anticipated, Bishop's Waltham Rotary Club Family Funday and Motorcade Procession. This year it will, as usual, be held at Hoe Road Recreation Ground on Saturday 10th June, 12.30–5pm. If you would like to get involved or have a stall, contact us via our website:

www.bishopswalthamrotary.org.uk/

Ian Treveil

Bishop's Waltham Photographic Society

Making the most of spring

Snowdrops are one of the first flowers of the new year and remind us that spring is just around the corner. So what better subject for our Society's February "out and about"?

Led by Mike and Maggie Hickish, 13 of our members met on a sunny afternoon to take to their knees to photograph these bell-shaped flowers at Warnford Park during its annual "Snowdrop Sundays". The extent of the snowdrops was fantastic with lots of opportunities to get both close-up views and landscapes.

Top tips for photographing snowdrops – get down low, use a beanbag or tripod to get your camera close to ground level. A gardener's kneeling pad comes in handy to avoid muddy knees. Using the camera's self-timer or use your cable release to keep your shots "shake free". A small f/stop will give you good depth of field or use a macro or telephoto lens for close-up shots of individual flowers.

Our final event for February was our "Match an Image" evening. A fun-filled, competitive evening where three teams competed in turn to match a randomly selected image from the 20 each team had available. Our judge, Matthew White, both member and experienced circuit judge, was heckled and challenged as he listened to the

outlandish remarks from opposing teams to justify a match. Sounds simple but would you consider a "match" when a pair of Lego airmen are lined up against a Dutch F16 Fighter Jet. Who won? Well no-one really cared. It was a team effort all round and a chance to see some excellent images. We repeated "Match an Image" with local camera clubs from Alton and Farnborough in March.

Or next event is on Thursday 6th April when Andrew Mills MA, ARPS, a local Southampton photographer, will give a presentation on "The Art of Photography" – how we view art and what inspiration we can gather from art to influence our own style of photography.

If you would like to find out more about the society, meet our members and listen to Andrew, why not come along, if only for the free tea and biscuits. We meet at 7.15pm for 7.30pm at St Peter's Church Hall, Free Street, Bishop's Waltham.

Alternatively, take a look at our website, which has more information on how to join and gives you a feel of what we get up to: www.bishopswalthamphotosociety.co.uk

Ann Erkut

Below: Snowdrops by Roy Gay.



Bishop's Waltham Garden Fair

Celebrating 20 years of fundraising

The annual Bishop's Waltham Garden Fair will be held at Wintershill Hall in Durley on Sunday 30th April from 10am to 4pm by kind permission of Jamie and Carolyn Balfour.

Now in its 20th year, the fair offers more than 60 specialist stalls, assorted refreshment options – including Julia's Kitchen, crêpes and a hog roast – as well as Morris Dancers, a jazz band and birds of prey display among the entertainments.

Tickets are £5 (free for children under 14) on the door or £4.50 if bought in advance from the website: www.bishops-waltham-garden-fair.org.

Free transport is available from The Square in Bishop's Waltham with



free parking on site.

As usual, the event will be raising funds for St John of Jerusalem Eye Hospital in Jerusalem, part of St John's Ambulance.

Above: A previous Garden Fair enjoyed by many at Wintershill Hall, Durley SO32 2AL.

Meon Valley u3a

New members welcome

Upcoming meetings of the Meon Valley u3a group are:

- April 4th "The Life and Times of Alfred the Great" by Kay Ainsworth
- April 18th "Knowle" by Jane Painter
- May 2nd AGM followed by: "Henry VIII and Bishop's Waltham Palace" by Tony Kippenberger

There are no meetings during the summer months but three outings have been organised by Jan Ernest:

- A guided walk around Chichester by Andrew Negus on June 13th, cost £5.
- A guided tour of Breamore House on July 18th, cost £10. Members to use own transport.
- A coach trip to Milestones Museum in Basingstoke on August 15th, cost £30. Pick up points in Wickham and Bishop's Waltham.

All outings are on Tuesdays. Payment as soon as possible please.

Meetings are usually held on the 1st and 3rd Tuesday of the month at 2pm in the Houghton Room at the Wickham Centre. Meetings with member speakers are free to members and £1 for guest speakers. Visitors are welcome for £2 per meeting.

We are a small friendly u3a and welcome new members. Annual membership is £12 or £15.35 to include the Third Age Trust magazine.

We are also seeking a new Treasurer and Secretary. If you are interested, please let me know.

*Betty Hiscock
Secretary 01489 894807*



King Alfred in Winchester.

Meon Voices

A mixed concert for spring

Community choir, Meon Voices, will be holding its spring concert at St Peter's Church in Bishop's Waltham on 29th April at 7.30pm. The performance includes works by Elgar and Gilbert & Sullivan as well as Queen and Simon & Garfunkel.

There will be an interval with tea, coffee and biscuits. There is no need to book and the concert is free to attend, but there will be a cash collection to be divided between the choir and the church's charities.

For details about joining the choir contact: Phil 01489 579078 or email coundleypj@yahoo.com or Jane on janevose@icloud.com. Weekly practice sessions are held every Monday evening, from 7.30–9.30pm at Bishop's Waltham United Free Church.

- On Saturday 13th May the Hampshire Police Male Voice Choir will be performing at St Nicholas' church, Wickham. Tickets are £12 (including an interval drink) and are available from Robert Goulson 01329 833299 or Rosemary Crane 07712 591186.

Titchfield Theatre

A musical for all the family to enjoy

One of Britain's favourite musicals for all the family, *Joseph and the Amazing Technicolour Dreamcoat*, will be on stage at Titchfield Festival Theatre from 5th to 15th April.

The show is one of TFT's biggest productions to date with a sizable cast of 27 adults and 14 children. A firm family favourite, the Andrew Lloyd-Webber show is a colourful extravaganza, with many catchy songs and an enduring appeal. Told entirely through song, the show follows the story of Jacob's favourite son Joseph, who moves from slavery, through imprisonment to become Pharaoh's right-hand man.

Sassy Harvey, TFT's Deputy Artistic Director, is directing the show:

"This was the very first musical I ever watched as a child and I remember all the spectacular costumes, set, singing and of course Philip Schofield in the lead role. It was a fantastic memory with my family, and I wanted to bring that family experience of theatre to Titchfield."

The run includes three matinee shows during the two weeks. Ticket prices are £12 for adults and £11 for children. For more information including booking tickets, contact the Box Office on 0333 666 3366 or go to <http://titchfieldfestivaltheatre.com/>.



Above: Rehearsals underway for Joseph

Joseph and the Amazing Technicolour Dreamcoat will be followed at Titchfield's Oak Theatre by *Yes Prime Minister* (17th to 27th May), while the Acorn Studio has *This is Living* by Liam Barrett (24th to 29th April) and *Gaslight* (8th-13th May).

Simon Frost

Winchester Go LD

Promising a great day out

The popular annual "Garden & Craft Fair", held in aid of Winchester Go LD, which supports people with learning difficulties, will be on 10th May this year from 10am to 4pm at Headbourne Worthy near Winchester.

The fair will be opened by the actor Tommy Jessop – the first actor with Down syndrome to star in a prime-time BBC drama.

There will be various talks by experts from Sparsholt College and more than 30 stalls selling a wide range of goods – from plants and food to homewares and fashion. Coffee and lunches are also available. (Sorry no dogs.)

Entrance is £5 with free parking on site at Upper Farm SO23 7LA. The event is being generously supported by Brewin Dolphin and Cobbs.

For more information visit <https://winchestergold.org.uk/get-involved/>
Elisabeth Colquhoun

Meon Valley Lions

Supporting disadvantaged pupils

Following our Christmas fundraising we contacted all schools in the Meon Valley and had responses from Bishop's Waltham, Curdridge, Denmead, Droxford, Swanmore, Wickham and Waltham Chase where we have been able to use these funds to support many children who are on free school meals by:

- Subsidising attendance at day and residential school trips.
- Buying materials to reduce anxiety and improve behaviour.
- Paying for attendance at After School Clubs.

- Paying for and improving Breakfast Clubs.

The good news is that we still have some funds left so if you are a parent, teacher, governor or PTA member and feel your school would benefit from funds to help disadvantaged pupils then do persuade your school to get in touch via our website:

www.meonvalleylionsclub.org.uk

Please note: only schools can apply for these funds and any money allocated is paid directly to the school.

Carole Dash

Wickham History Society

Upcoming meetings

The next meeting of the Wickham History Society is on 25th April with "Violet's Titanic Escape" by Jane Glennie. Based on stewardess Violet Jessop's memoirs, Jane will explain how Violet survived.

On 23rd May the talk by Kay Ainsworth is "The Archaeology of the

Meon Valley: Stone Age to Post Mediæval", looking at developments along the length of the Meon from East Meon to Hill Head.

Meetings are held at Wickham Community Centre at 7.30pm, with membership at £8 p.a. or £2.50 per meeting for guests.

Dates for your diaries

April

- 4th April 2pm Wickham Centre, u3a meeting. "The Life and Times of Alfred the Great" by Kay Ainsworth.
- 5th–15th April 2.30pm or 7.30pm Oak Theatre, Titchfield, *Joseph and his Amazing Technicolour Dreamcoat*.
- 6th April 7.15pm Bishop's Waltham, Photographic Society "The Art of Photography" by Andrew Mills, St Peter's Church Hall.
- 7th April 10am Easter Craft for Children, St Barnabas' Church.
- 7th April 11am to 2pm Swanmore's Big Lunch, Swanmore Recreation Ground.
- 8th April 9.45am–12noon Marsh's Meadows, Swanmore Conservation Group work party.
- 9th April Easter Day.
- 18th April 2pm Wickham Centre, u3a meeting. "Knowle" by Jane Painter.
- 22nd April Meon Valley Bowling Club Open Day, Priory Park. Tel. 01489 896194 for bookings.
- 22nd April 10am Classic Cars at Barnaby's, Swanmore village car park.
- 22nd April 11am-3pm Bishop's Waltham Bites! Tickets needed.
- 22nd-23rd April 1pm Swanmore Open Gardens, tickets at the Paterson Centre.
- 25th April 2pm–4pm Meon Valley Carers Group AGM and activities, Paterson Centre.
- 25th April 7.30pm Wickham History Society. "Violet's Titanic Escape" by Jane Glennie. Wickham Community Centre.
- 24th–29th April 7.30pm Acorn Studio, Titchfield, *This is Living* by Liam Barrett.
- 27th April 8am Bishop's Waltham Rotary Club Charity Golf Day, East Horton Golf Club.
- 29th April 7.30pm Meon Voices spring concert, St Peter's Church, Bishop's Waltham.
- 30th April 10am–4pm, Bishop's Waltham Garden Fair, Wintershill Hall, Durley SO32 2AL.

May

- 2nd May 2pm Wickham Centre, u3a meeting. AGM followed by: "Henry VIII and Bishop's Waltham Palace" by Tony Kippenberger.
- 4th May Local elections – don't forget your photo ID if you vote in person.
- 6th May Coronation of HM King Charles III.
- 7th May 11am–3pm, Swanmore's Big Lunch, Swanmore Recreation Ground.
- 8th–13th May 7.30pm Acorn Studio, Titchfield, *Gaslight*.
- 10th May 10am–4pm Garden & Craft Fair in aid of Winchester Go LD, Upper Farm, Down Farm Lane, Headbourne Worthy, SO23 7LA.
- 13th May 9.45am–12noon Marsh's Meadows, Swanmore Conservation Group work party.
- 13th May 10am-12noon Paterson Centre car park. Garage Sale in aid of the Royal British Legion.
- 13th May 7.30pm Hampshire Police Male Voice Choir concert, St Nicholas' Church, Wickham.
- 17th–27th May 2.30pm or 7.30pm Oak Theatre, Titchfield, *Yes Prime Minister*.
- 23rd May 2pm–4pm Meon Valley Carers Group. "Wellbeing" with Justine Markley, Paterson Centre.
- 23rd May 7.30pm Wickham History Society. "The Archaeology of the Meon Valley: Stone Age to Post Medieval" by Kay Ainsworth. Wickham Community Centre.
- 27th May 10am Classic Cars at Barnaby's, Swanmore village car park.
- 28th May Open Rinks Tournament, Meon Valley Bowling Club, Priory Park.

Looking ahead

- 24th June 10am Classic Cars at Barnaby's, Swanmore village car park.
- 24th June 12noon– 4.30pm St George Foundation Garden Party, Vicarage Lane.
- 27th June 2pm–4pm Meon Valley Carers Group, Summer afternoon tea, Paterson Centre.
- 22nd July 7.30pm Villagers Open Air Shakespeare Group, *The Comedy of Errors* Hill Farm House, Droxford Road, Swanmore.

To advertise in
The Swanmore Link
 please contact
John Austin on
01489 893409 or
j.austin830@talktalk.net.

Advertisements
can now be in
full colour at no
additional
charge.

Advertisers' Directory

Animal services		Gardening/forestry	
Bishops Waltham Pet Services	35	Natural Gardens	35
Feed the Birds	36	Richard's Grass Cutting	40
Pest Off	38	Gerald M Vivian	38
The Dog Room	40		
Building/carpentry/property maintenance		Glass & windows	
M R Chase	37	SAJE UVPC	43
Lee Cooper	34	Steve West	35
Dean Architectural Technician	41		
Diamond Carpentry	36	Hairdressers	
R & G Gamblin	42	Dianne	39
J T Carpentry	41	Shades of Sweetpea	39
Tim Millier Carpentry	36		
Geoff Pilcher	37	Health services	
N W Stubbington Ltd	36	Sarah Curry Gestalt therapist	41
		Mindful Breath Studio	37
		Piers Spencer Osteopath	33
		Saxby's Eye Care	33
Chimneys/logs			
Chimney Sweep	42	Household services	
R J Ralls	39	Elliott Carpet Care	40
Woodlea Nursery	38	Hampshire Antique Restoration	42
		Alan Shawyer Appliance Repairs	34
Computer services			
Computer Problems Solved	34	Home Care	
		Lapis Care	35
Educational/childcare			
Sallie Smith	36	Motor repairs	
Swanmore Pre-School	41	W J Heard	38
		Taylor's Garage	42
Electrical services			
P Graham Electrical	40	Outdoor living	
MFC Electrical Ltd	38	Hampshire Shades	33
G Rixon Ltd	34		
		Painting and decorating	
Fencing		Philip Broad	38
RJS Fencing Contractor	33	R J Fisher	36
		Mark & June Mason	38
Financial/legal services		N W Stubbington Ltd	38
Butler & Co	40		
Chamberlains	41	Plumbing/heating	
Hayhurst Jackson Ltd	39	CJL Plumbing and Heating	
Nicholas Ridge	34	337	
		William Fleming	32
Florists		J D Humphrey Ltd	38
All About Flowers	36	G Rixon Ltd	34
		White Rose Plumbing	39
Food & drink			
Wyches Vineyard	31	Printers	
		Solent Design	42
Funeral services			
South Downs Funeral Service	31	Taxi services	
Richard Steel & Partners	32	Chase Cars Private Hire	40





Award Winning Quality English Wine from the chalky slopes of The South Downs in Upper Swanmore

Please contact us by email, phone, or by completing the online form on our website.

We will deliver for free within a 20-mile radius of Swanmore, Hampshire.

5% discount available on orders of 12 bottles or more.



WINEGB
WESSEX REGION



WINEGB
WESSEX REGION



WINEGB
WESSEX REGION

info@wychesvineyard.co.uk

Tel 07885 822289

wychesvineyard.co.uk



South Downs Funeral Service Funeral Directors & Memorial Consultants



Your Local, Independent & Family Owned Funeral Homes of Denmead, Wickham & Clanfield

Our Clanfield Funeral Home
43 Drift Road, Clanfield PO8 0JS

Tel: 02392 570239

clanfield@southdownsfuneralservice.com

Our Denmead Funeral Home

The Old Post Office House, Hambledon Road,
Denmead PO7 6NN | Tel: 02392 231567

care@southdownsfuneralservice.com

Our Wickham Funeral Home

13 The Square, Wickham,
Fareham, PO17 5JG | Tel: 01329 833920

wickham@southdownsfuneralservice.com

Direct Funeral Services from £995.00

Traditional & Tailored Funeral Services from £1725.00

www.southdownsfuneralservice.com



Golden Charter Funeral Plans
24 hour, local and personal service
Floristry service | Stonemasonry service
No deposits required
Fully accredited and regulated members of SAIF





Plumbing & Heating

wtfleming@me.com



William
Fleming

Mobile

07775 866690

Home

01329 830379

All aspects of Plumbing & Heating

Boilers :- Servicing, Replaced, upgrades

Central Heating :- Flushed £350

Gas, LPG, Oil Log Burners

Domestic & Commercial

39 years experience

Free estimates

No call out charge

Breakdown . Service

New Installs



EST **RICHARD STEEL** 1860 & PARTNERS

THE FAMILY OWNED
FUNERAL DIRECTORS

Incorporating
Nigel Chamberlain
& Partners for
over 30 years



BISHOP'S WALTHAM

The Gate House, Victoria Road,
Bishop's Waltham, SO32 1DJ
01489 892640



WINCHESTER

Alderman House, 12-14 City Road,
Winchester, SO23 8SD
01962 862333



ALRESFORD

58 West Street, Alresford,
Hampshire, SO24 9AU
01962 798789

www.steelsfunerals.co.uk
Available 24 hours



Piers Spencer

Registered Osteopath

Bishop's Waltham Osteopathic Clinic

White Hart Stables, Bank Street
Bishop's Waltham SO32 1AN

01489 891 880

piersspencer@hotmail.com

www.bwosteopathy.co.uk



2 Houchin Street, Bishops Waltham SO32 1AR

01489 896330

info@saxbys-eyecare.co.uk



GET READY FOR SUMMER

SAVE UP TO £1500 OFF
OUR PREMIUM SHADES & PERGOLAS



OR CALL 01489 290025



AGRICULTURAL, EQUESTRIAN & DOMESTIC FENCING

Stock Fence | Deer Fence | Equifence
Post & Rail | Stake & Rail
Permanent | Electric Fencing
Closeboards | Panel Fencing | Trellis
Picket Fencing | Dog Proof Fencing

Call Richard on **07930 229649**

www.rjs-fencing.co.uk



To advertise in the
Swanmore Magazine contact

John Austin on
01489 893409

EXPERT TAX ADVICE WITH A HUMAN FACE FOR THE MEON VALLEY



WATCHING OUT FOR THE NEXT GENERATION

Is IHT a factor in making my Will? Is a Family Trust a good idea?

PROPERTY OR WORK OVERSEAS

How does it affect my tax if I live, work or have property abroad?

FOR ENTREPRENEURS

Am I the only one wondering whether it's worth all the aggro?

PERSONAL TAX

What is the best way to order my tax affairs, in full compliance with the law?

SELLING MY BUSINESS

How much tax will I pay? What is my business worth?

Nicholas Ridge ^{Cta}
TAX EXPERTISE

Oakleaf, Ludwells Lane, Waltham Chase, Southampton, SO32 2NP
t: 01489 899102 e: nicholas@nicholasridgecta.co.uk
www.nicholasridgecta.co.uk



ALAN SHAWYER DOMESTIC APPLIANCE REPAIRS

- Washing Machines •
- Tumble Dryers •
- Dishwashers •
- Cookers & Refrigeration •

T: 01489 895165
M: 07815 054077

G. RIXON LTD.

ELECTRICAL PLUMBING AND HEATING ENGINEERS



01329 834600

www.g-rixon-ltd.co.uk

enquiries@g-rixon-ltd.co.uk

OIL, LPG AND NATURAL GAS FIRED BOILERS
WORCESTER BOSCH ACCREDITED INSTALLERS
DI SABLED BATHROOM SPECIALISTS

G. RIXON LTD. Wynot Heath Road Soberton Hampshire SO32 3PO



All Types of Carpentry & Building Work Undertaken

Kitchens, Bathrooms, Windows & Doors,
Renovations & Repairs, Wardrobes & Cupboards,
Roofing, Painting & Decorating, Furniture Restoration

Professionally Qualified & Fully Insured
20+ Years of Local Experience

M: 07875 557961 T: 01489 895890

E: leeacooper@talktalk.net

W: www.leecoopercarpentry.co.uk

Computer Problems Solved

Christopher Guénier

01489 890738
07962 641796

CPS Ltd, Orchardlea
Swanmore, Hampshire. SO32 2QZ
info@computerproblemsolvedltd.co.uk
www.cps-ltd.org.uk



A qualified and experienced Computer Engineer who can efficiently solve all your home and business computer needs.

NATURAL GARDENS

ANGELA PALMERTON MCIHort, MPGCA

Gardening with Nature in Mind

WILDLIFE GARDENING
CONSULTANCY AND ADVICE
NATURAL LANDSCAPE & GARDEN DESIGN
BORDER & PLANTING DESIGNS
SPECIALIST PRUNING

Helping people to create and manage
ecologically diverse gardens and
landscapes

07789 293591
angela@natural-gardens.co.uk
www.natural-gardens.co.uk



Bishops Waltham PET SERVICES

Accredited and externally verified
Canine Behaviourist and Trainer.

Full Member of the **Institute Of Modern Dog Trainers** -
The UK's leading dog education provider

FORCE FREE PUPPY CLASSES

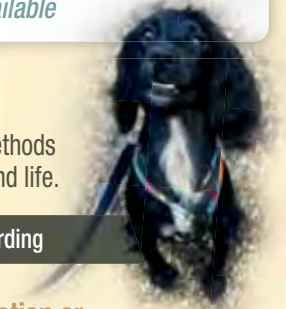
I run a very special Puppy Course, which delivers an up to date,
and completely force free passive learning experience for puppies.
Follow on courses and 1-2-1's also available

I specialise in working with dogs with
problem behaviour.

I only use force free, stress free, kind methods
to train, because your dog deserves a kind life.



Licensed for Daycare and Home Boarding



Please contact me for more information or
to arrange a consultation or service for your dog.

Tel 07714 488412

bishopswalthampetservices@gmail.com
bishopswalthampetservices.webs.com



Your Local Home
Care Provider &
Consultancy Service,
Owned and Run by
Registered Nurses



Our experienced and highly
skilled team offer bespoke
packages enabling you to remain
safely in your own home. This
can include Personal and
Palliative Care, Social Visits and
Domestic duties.

Want to be part of a fantastic
team and really make a
difference?
Lapis believe that:
Cared for staff = Cared for clients
Call or email us now for more
information.



Call us on **01489 890016** to see
how we can help you, or
email: contact@lapiscare.com



www.lapiscare.com

LOCAL GLASS REPAIRS WINDOWS & DOORS

All Aspects of Glass & Glazing



Replacement Double Glazed Units
Remedial work to Windows & UPVC Doors
Emergency Lock Outs
Lock Replacements for Windows & UPVC Doors

Steve West: 07718 513283

Email: bootneck67@icloud.com

Based in Swanmore

DIAMOND Carpentry & Construction



All Aspects of Carpentry & Building Work Undertaken

Extensions - Refurbishments - New Builds

Fully Fitted Kitchens & Bathrooms - Doors & Windows

Bespoke Joinery - Car Ports & Garden Buildings

Decking & Fencing - Landscaping

Fully Qualified & Insured  Reliable & Trustworthy Service  High Quality Workmanship

Contact Mike Emmence for a free quotation

Mob: 07530 966318 Tel: 01489 895316

Email: sales@diamondcarpentry.com

www.diamondcarpentry.com

To advertise in the
Swanmore Magazine contact

John Austin on
01489 893409

FEED THE BIRDS

WALTHAM WILD BIRD SEED DELIVERIES

FREE local delivery service
£5.00 minimum order

(Table Top Mix)

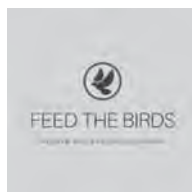
Premium Wild Bird.. 1.8kg... £2.50
Deluxe Wild Bird 1.0kg... £2.00
Peanuts 1.5kg... £3.00
Sunflower Hearts..... 2.0kg... £5.00
Black Sunflower 2.0kg... £3.00
Mixed Suet..... 900g .. £3.00

(Berry & Insect Flavour)

Fat Cakes..... £1.00 each
Fat Balls..... 10 for £2.00

(Insect Flavour)

Coconuts..... from £1.25 each
Mealworms .. 500g. £7.00
Seed Feeders... from £2.50
Peanut Holder.. from £3.00



Contact Allison McNally

07771 895 370 allisonfullerton@talktalk.net



All About Flowers at Botley Mills

Wedding Flowers, Funeral Tributes,
Bouquets, Balloons and Events

02381 781870

email:

rose.allaboutflowers@gmail.com

Daily
deliveries

www.allaboutflowers.co.uk

R.J. Fisher Ltd Interior & Exterior Painting & Decorating

Over 30 years experience

For your free estimate
please telephone

01489 331136

07921 508941

I offer English, French and German Tuition
to GCSE Level including adults returning
to learning and SEN.

All subjects at Foundation, KS1 and KS2.
Common Entrance Preparation.

French and German Conversation Groups.

Please contact Sallie Smith,
Primary/Secondary Teacher –
33 years' experience B.A. Hons, PGCE,
DBS checked

01489 278018 - 07762 492651

salliesmith@sky.com

Tim Millier Carpentry

Your requirements to our standards

Carpentry

Joinery

Built-in Lounge, Study and Bedroom Furniture
Doors fitted, Woodwork Repairs carried out
Custom Built Projects, Building Services

Tel: 01489 892063

Email: tim.millier@gmail.com

M. R. CHASE BUILDING COMPANY LTD.
Your Complete Building Company



A FINE FAMILY TRADITION OF
QUALITY CRAFTSMANSHIP

FREE QUOTATIONS & EXPERT ADVICE
FOR ALL YOUR BUILDING REQUIREMENTS

FOR THE BEST IN RELIABILITY,
CUSTOMER CARE & ATTENTION TO DETAIL

07966 222778

mrcbldco@yahoo.co.uk

**To advertise in the
Swanmore Magazine contact**

**John Austin on
01489 893409**

GEOFF PILCHER
PLASTERING & ARTEXING

Small family business offering

Quality Workmanship at Sensible Prices
Repairs • Re Skims • Plasterboarding • Coving
Insurance Water Damage Ceiling
A Friendly Reliable Service

Please call: 023 8044 1432
Mobile: 07885 461585



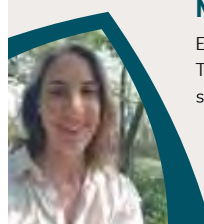
Mindful Breath Studio

Alison Potter

Mindfulness Based Stress Reduction

Eight-week online course
The gold standard in mindfulness training,
scientifically proven to alleviate stress and anxiety.

To find out more and 2023 course dates
alison@mindfulbreathstudio.co.uk



CJL PLUMBING AND HEATING SERVICES LTD.
Plumbing and Heating Solutions

Family run business with 16 years of local experience

Installation. Maintenance. Repairs.

Telephone: 01489 890269 or 07814971935

Email: contact@lewington.biz



Free estimates
No call out charge



Tel: 01329 832159

BPCA Qualified • Insured

W.J. HEARD MOTOR REPAIRS



SHORE LANE
BISHOP'S WALTHAM
Nr. SOUTHAMPTON
SO32 1DY

Tel: 01489 895607

www.wjheardmotorrepairs.co.uk



Servicing, Welding
Car, Motor Home and Commercial repairs
Diagnostic, MOT Testing and Air Conditioning



INTERIOR & EXTERIOR DESIGN & DECORATION

Full Colour Schemes Available

For free, friendly advice and quotes please call
Philip Broad - Tel: **023 9281 2042** Mobile: **07720 604035**
Qualified Interior Designer
Flat 7, Dymond House, Gisors Road, Southsea, PO4 8GZ

J & D Humphrey Ltd

Plumbing, Gas, Oil & Solid Fuel
Heating Installations

Gas Fitting and Servicing

Gas Safe Register No: 9995

REGISTERED PLUMBER

50 Goodlands Vale, Hedge End. SO30 4SL

Telephone: 01489 893620



MFC Electrical Ltd

Michael Capell

Email: mcapell95@gmail.com

Mobile: 07973 407875

Gerald M Vivian. Landscape Gardener

- ◇ Paving
- ◇ Ponds & Water features
- ◇ Brick walls & Steps
- ◇ Flintwork
- ◇ Natural Stonework
- ◇ Fencing & Gates
- ◇ Lawns
- ◇ Pergolas & Garden structures
- ◇ Driveways



Over 25 years experience with a reputation for high standards of work.

Tel: 01489 893954 Mob: 07769 690454

g.vivian@btinternet.com

www.geraldvivianlandscapes.co.uk

MARK & JUNE MASON

HUSBAND AND WIFE HIGH QUALITY
PAINTERS AND DECORATORS

Period to modern properties

We work around your requirements

Dulux Select Decorators

01329 235847/ 07973 162397

masonspaint.co.uk

SEASONED LOGS FOR SALE

Half or full load delivered

For further details call John on

07940 357839

Woodlea Nursery Durley

N.W. STUBBINGTON LTD BUILDER • PAINTER • DECORATOR

- Extensions • Roof Repairs
- Alterations • Interior Decorator
- External Painting
- Insurance Work etc.

02392 376994 • 07967 002885

To advertise in the
Swanmore Magazine contact

John Austin on

01489 893409



Hayhurst Jackson
Limited

**ACCOUNTING & TAXATION
SPECIALISTS**

We offer a friendly and personal service

Our personal, yet professional, service allows us to tailor our work to your bespoke requirements, resulting in financial services which accurately reflect your needs.

- Bookkeeping
- VAT, PAYE & CIS
- Accounts Preparation
- Personal & Corporation Tax Returns

Martin Jackson & Linda Barham
Tel: 02380 693999/07791 547843
linda@hayhurstjackson.co.uk

21 Fontwell Gardens
Horton Heath
Eastleigh, SO50 7NL

48 Friars Croft
Calmore, Totton
Southampton, SO40 2SS



RJ Ralls
solid fuel services

Chimney Sweep

**Fully qualified and registered
Fully insured
Certificates issued**

Contact Rob on **07795 060 270**

rjralls.co.uk



Debbie & her team would like to welcome you to Shades of Sweetpea hair salon. A new hairdressing business situated in Chapel Road Swanmore. Specialists in cuts and colours, also wedding and occasion hair. Pop in and pick up a price list, or book a free of charge consultation, so we can assess your hair and advise you on the right style for you and your hair.

All the family welcome!

*Chapel Road, Swanmore SO32 2QB
01489 893646*

Open

**Wednesday 9am-6.30pm, Thursday 10am-8pm,
Friday 9am-7.30pm, Saturday 8am-3pm**



Are you having a BAD HAIR DAY!

- Let me help
- Ring Dianne
- 01489 877728
- 07790 782725



- **Any Time:** Can be arranged (very flexible).
- **Any Place:** Due to Covid 19 at my discretion.
- **Any Hair:** Everyday / Classic. Over 35 years experience.

At competitive prices

WHITE ROSE PLUMBING

All Plumbing Work From Bathroom Suites
To Tap Washers - To Blocked Drains

Contact:

Russell Beaumont

Tel: 01489 893419 - Mob: 07843 586366

Email: whiteroseplumb@googlemail.com

CARPET & UPHOLSTERY CLEANING HIGH QUALITY & HONEST Est 2003

- Carpets, Leather, Rug & Curtain Cleaning
- Independent Family Run & Owned Business
- Approved by Trading Standards
- Honest & Competitive Pricing
- Rapid Drying Times
- See our other reviews at;
www.elliottcarpetcare.co.uk



'We have used Elliott Carpet Care for many years and have never ever been disappointed. Carpets and sofas come up like new. The attention to detail and care taken is extraordinary'.

Call us on:
07436 266078

Richard's Grass Cutting and Hedge Trimming Services



- Call for a free estimate
- 7 days to accept or cancel



Tel: 01489 893867

Mobile: 07748 856684



Chartered Accountants
& Registered Auditors



ICAEW
CHARTERED
ACCOUNTANTS

LOCAL INDEPENDENT ACCOUNTANTS AND
TAXATION ADVISORS

FREE INITIAL CONSULTATION

Full range of accountancy, auditing & taxation services

Business start up advice

Book-keeping and Payroll Services

Self-Assessment Returns

Detailed Fixed Cost Quotes

**Avalon House, Waltham Business Park,
Brickyard Road, Swanmore, Southampton,
SO32 2SA**

Tel: 01489 896996

Email: enquiries@butlerco-bw.co.uk

Website: www.butlerco-bw.co.uk

Chase Cars Private Hire

Our courteous and professional drivers are available for:

- Local and long trips
- Airport and Dock runs
- School Runs
- 8 Seater Vehicle Available
- Business and Contract Accounts Available



Phone: **01489 894433**
email: info@chasecars.co.uk
www.chasecars.co.uk

P. Graham Electrical Ltd



Electrical Contractor



REGISTERED MEMBER



ALL TYPES OF WORK UNDERTAKEN
Domestic - Commercial - Industrial

Installation of Electric Car Charger including OLEV grant

Tel: 01489 890555 (answer phone) Mobile: 07766 525524

Email: pgrahamelectrical@btinternet.com

Based: Hoe Road, Bishop's Waltham

THE DOG ROOM

Bathing, Clipping, Scissoring
& Hand Stripping
Nails, Ears and Glands

Quiet handling,
professionally trained

Microchip service with
National reg - vet & KC trained



**Tel: Waltham Chase 01489 892272
or 07710 622881**

Sarah Curry

Qualified Experienced
Gestalt Counsellor



Are you feeling overwhelmed, anxious, stressed or depressed?

I can help. Often people just need a private space. The time to explore their thoughts and feelings. An opportunity to express themselves without being judged. I can provide a safe, welcoming environment where I can support you to work through your troubles which will enable you to make changes so that you can live and enjoy a more fulfilled life.

Please contact me for more information.

P: 07737 761920

W: sarahcurrycounselling.co.uk

E: sarah@sarahcurrycounselling.co.uk



Planning - Building Regulation Architectural Services

If you're planning on an extension, loft conversion or any alteration to your home it's always best to get professional advice.

Free consultations from a local fully qualified Architectural Technician.



Telephone Dean on 07714058475



07885 283036 or 02392 632037

Extensions | Alterations | Refurbishments
New Builds | Landscaping



Charity No: 801230

Church road, Swanmore SO32 2PA
www.swanmorepreschool.org.uk

We are open Monday-Friday 8.30am-3.30pm, term time.

We offer flexible start and finish times.

We are registered for children aged 2-5 years.

- Located in a purpose-built building for Early years
- Indoor and outdoor learning environments
- Experienced professional and friendly staff
- We work closely with families and Carers to support learning & development
- Approved to offer 15 and 30 hours EYE funding and 2 year funding

To find out more please email:
sarah.hiscock@swanmorepreschool.org.uk
or contact us on
01489-893779 or 07958 436396

CHAMBERLAINS FAMILY SOLICITORS

Residential Conveyancing

Commercial Property

Probate & Wills

Estate Administration

Lasting Powers of Attorney

RED LION STREET
BISHOP'S WALTHAM SO32 1ST

tel (01489) 896141

info@chamberlainslaw.co.uk



Taylor's Garage
Droxford
Hampshire SO32 3QL



Tel: 01489 877433

CAR and MOTORCYCLE MOTs

Service and repair to cars
light commercials and horse trailers

Air conditioning - service & repair

Competitive prices on
tyres batteries and exhausts

Collection & delivery or loan car available
subject to availability

BUY WITH CONFIDENCE

Trading Standards Approved Trader

R & G GAMBLIN

Extension Alteration Renovation

Planning work

Bricklaying.
Civil Engineering.
UPVC Windows & Doors.
Plastic Fascia & Soffit.
Concrete.
Loft Conversion.
Roofing Pitch & Flat.
Painting.
Conservatories.

Digger Hire.
Drainage.
Fencing.
Plastering.
Driveways.
Plumbing.
Garages.
Carpentry.
Electrics.

For Free Estimates please phone

Rob
01489 - 891801

CHIMNEY SWEEP



- ◆ Professional & comprehensive service
- ◆ Stringent dust control methods observed
- ◆ No mess guarantee
- ◆ Bird guards & weather cowls fitted
- ◆ Wood stoves & multi-fuel stoves serviced
- ◆ Flue inspection & airflow testing
- ◆ Calls taken seven days a week

Tel: 01962 734029
Mobile: 07721 458067

HAMPSHIRE ANTIQUE RESTORATION

Antique Furniture Conservation
French Polishing, Marquetry & Carving
Antique Clock Restoration & Repairs
Antique Silver and Metals Conservation
Ceramics, Antiquarian Books and Art
Free Estimates - Established 1985

01489 893 632 - 07830 293 078

Professional Conservation of Furniture, Clocks & Objet D'Art

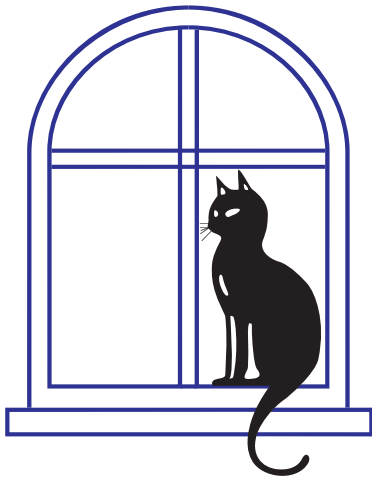
www.restorer.org.uk



- Design
- Artwork
- Stationery
- Leaflets
- Flyers
- Brochures
- Booklets
- Newsletters
- Labels
- Postcards
- Folders
- Posters
- Banners
- Vinyl
- Exhibition Displays



Tel: 01489 892344 • Email: sales@solentdesignstudio.com
www.solentdesignstudio.com



SAJE UPVC LTD

“High quality service that’s stood the test of time”

- Still a family business.
- Still your local manufacturer and installer.
- Still sending quotes by email/post with no pressure selling.
- Still around to support our 10 year guarantee.
- Still traditional good manners and good service.

Our range includes everything from PVC to hardwood and aluminium

**Don’t believe us?
Check out our work at
checkatrade.com**

**Call us on: 01329 835836
Visit us at: www.sajeupvc.co.uk**



All together better



Registered Company

Checkatrade.com

Established in 1989

SAJE

Brookfield Farm, Misingford Road,
Swanmore, Southampton.
SO32 2QE

Email: sales@sajeupvc.co.uk

Online: www.sajeupvc.co.uk

Parish and village directory

St Barnabas contacts

Church Wardens Janet Chant 01489 894942
 Dave Lee 07941 777448
churchwardens@stbarnabas.org.uk

Ministry Team

For enquiries about weddings and baptisms
Revd Canon Nick Whitehead 01489 895327
Revd Canon Dr Hazel Whitehead 01489 895327
Funerals & bereavement support
Jill Phipps 01489 891117

Sunday Club Ben Armstrong 07927 933073
PCC Secretary TBD
PCC Treasurer Andrew Wilkinson 01489 895870
Parish Giving Champion Derrinda Laing 01489 894250
Safeguarding Officer Caroline Vost 07542 706642
safeguarding@stbarnabas.org.uk
Home Groups Co-ordinator Mary Morfill 01489 892823
Electoral Roll Officer Jenny Sharpe 01489 892750
Sacristan Vicky Cronin 01489 536483
Christian Aid Rep Wendy Horn 01489 878220
Church Cleaning Jen Frampton 01489 891277
Church Flowers Juliet Helbren 01489 893316
Captain of the Tower Ed Collis 02392 523650
Church Clock Roger de Vere 01489 892768
Data Protection contact Amanda Ankers 01489 893415
dataprotection@stbarnabas.org.uk
Parish Administrator Gail Norris
office@stbarnabas.org.uk
Website www.stbarnabas.org.uk

Paterson Centre

Enquiries office@stbarnabas.org.uk

The Swanmore Link parish magazine

Editor Penny Clive 01489 895923
editor@stbarnabas.org.uk
Village directory Roger de Vere 01489 892768
deverer2@gmail.com
Distribution Sue de Ver 01489 892768
Advertising John Austin 01489 893409

Swanmore Methodist Church contacts

Stewards stewards@s-m-c.org.uk 01489 896182
Hall Bookings swanmoremclettings@gmail.com 01489 896387
Church Notices Jill Sutton 01489 892824

Local Authorities

Hampshire County Council 03300 551375
Winchester City Council 01962 840222
Hampshire Council of Community Services 01962 854971
Electoral Registration Office 01962 840222
County Archivist 01962 863153

Local Representatives

Local MP Flick Drummond 01962 679920
Hants County Councillor Hugh Lumby 01489 877444
Winchester City Frank Pearson 01489 892822
Councillors Malcolm Wallace 07739 050224
 Vicki Weston 01329 835161

Swanmore Parish Council

Executive Officer Tracey Molloy 01489 890651
clerk@swanmorepc.org.uk
Accredited Community Safety Officer
Gary McCulloch 07442 156124
acso@swanmorepc.org.uk or Facebook-Swanmore ACSO
Village archives – any enquiries should be sent to the clerk.

Swanmore College

Headteacher Kyle Jonathan 01489 892256
Community Programme Chris Loveday 01489 897896

Swanmore Primary School

Headteacher John Paterson 01489 894555
Site Manager Scot Murray 07935 699854
Friends of... (FOSPS) Naomi Thorby 01489 894555

Village Amenities

Barnaby's Community Coffee Shop 01489 854490
www.barnabys.coffee

Village Hall

Chairman Jon Woodman 01489 890582
Bookings Chris Ansty 07968 646236
bookings@swanmorevillagehall.co.uk 01329 835925

Care Group

Help numbers Barry Rowe 01489 894521
 Allison Gurry 01489 895188

If no reply please ring the next number on the list. Do not leave answer phone messages. Please call between 9am and 6pm during the week and only in an emergency at weekends.

Lunch Club

Queries from new or existing volunteers
Ann Warrington 01329 510667
Queries from new or existing members
Pam Manson 01489 892374

Baby & Toddler Support

Baby & Toddler Group Zoe Smart 07788 987212
Swanmore Pre-School Sarah Hiscock 01489 893779
The Greenery Hannah Wallace 07599 954819

Police

Non-emergency 101
Community Police Officer PCSO Sarah McCulloch
sarah.mcculloch@hampshire.pnn.police.uk

Doctors

Bishop's Waltham 01489 892288
Wickham 01329 833121
Droxford 01489 877588

Hospitals

Royal Hampshire, Winchester 01962 863535
Royal South Hampshire, Southampton 02380 634288
Southampton General 02380 777222
Queen Alexandra & St Mary's Hospitals 02392 286000

Transport

Southampton Airport	02380 629600
Railway Timetable Enquiries (Domestic)	08457 484950
International Rail Enquiries	02072 785240
Local Buses (Rosemary Ridgeley)	01489 894205
Bournemouth Airport	01202 364000

Clubs and Social Organisations

Bridge	Anne Green-Wilkinson	01489 893114
Disabled Club	Susan Stephens	01489 877585
Dramatic Society (SADS)	Caroline Powell	07701 044563
Manéglise Twinning	Ian Ford	01489 890462
Meon Valley Lions Club	Carole Dash	07778 581723
Ramblers	Pauline Reed	01489 892386
Swanmore Art Group	Julia Wright	01489 893378
Swanmore Society	John White	01489 894266
Conservation Group	Carol Paling	01489 894294
Swanmore Old-Time & Modern Seq. Dancing	Francis Baxter Jean Hayman	01329 236587 01489 809271

Youth Organisations

Scouts – Group Leader	Julian Livingstone	01489 893399
Scout Leader	Jo Fox	01489 894765
Cub Scouts	Julie Goddard	07879 330707
goddard@aol.com		
Beavers	Roisin Smith	07748 113320
Swanmorebeavers@gmail.com		
Rainbows	Sallyann Smith	01489 890802
1st Swanmore Brownies	Sam Hemingway	01489 891624
2nd/3rd Swanmore Guides	Sarah Woodman	01489 893280
Meon Valley Rangers	Sarah Chittock	07870 136817
BW Dynamos	Chris Barber	07721 555733
Soccer School		
Waltham Wolves	Alison Fripp	01489 89913
SwanmoreYouth FC	John Hickey	07539 424674

Sports Clubs

Meon Valley Lawn Bowls	Judith Moss	
jmoss@broadlane2.plus.com		
Lawn Tennis	Mandy White	
sec@swanmoretennis.co.uk		
Swanmore Cricket Club	Oliver Rowe	07816 332324

Other Organisations

Action for Children	Brenda Simpson	01489 893810
Age Concern	Information Hub	0800 3287154
Cancer Research	Anne Pearson	01489 892822
Children's Society	Vicky Cronin	01489 536483
	Dinah Weberstadt	01489 896967
Hand Bells	Julia Wright	01489 893378
Home-Start Hampshire	Laura Vincent	01329 835936
<i>Support for young families in the home</i>		
Leprosy Mission	Bobbie Branson	01489 891717
Macmillan Cancer Support	Kathy Weaver	01489 895630
Meon Valley Carers Group	via Andover Mind	01264 332297
enquiries@andovermind.org.uk		
Meon Valley Trefoil Guild	Denise Lord	07747 064455
Royal British Legion	Penny Elliot	01489 890766
RBL Poppy Fund	Wendy Horn	07821 236480
Swanmore Educational Trust	Richard Cooksley	01489 895776
secretary.swanmoreET@gmail.com		

Swanmore "Litter squad"	David Street	01489 896331
Woodland Trust	Dennis Wheeler	01489 892911

Utilities Emergencies

Electricity	Emergency	0800 404090
	Power cuts	105
Gas	Emergency/escapes	0800 111999
Portsmouth Water	General enquiries	02392 499888
BT	Directory enquiries	118500

Other services

Alcoholics Anonymous		01962 869129
Animal Shelter		01329 667541
Bank Scam Service		159
Blood Donors		0800 373701
Citizens' Advice Bureau (CAB)		03444 111306
Community Health Council		01962 860661
Department of Work and Pensions (DWP)		0800 0113797
Family Conciliation Service		02392 660919
Hampshire Library Services		0845 6035631
Housing Office, Winchester		01962 840222
Job Centre, Fareham		01329 231551
Night Shelter, Winchester		01962 878500
Parent Support Link		02380 399764
PDSA	Southampton	02380 773505
	Portsmouth	02392 754429
Registrar of Births, Marriages and Deaths		03005 551392
Relate (Marriage Guidance)		01962 861336
RSPCA, Stubbington		01329 667541
Samaritans	Portsmouth	02392 691313
	Southampton	02380 632888
	Winchester	01962 860633
Social Services	Adult services	0845 6035630
	Child Services	0845 6035620

This directory has been compiled jointly by the Parish Council and churches in Swanmore to help you find contacts within the village for further information.

Please help us to help you by keeping the information up to date. Amendments or additions should be sent to Roger de Vere at deverer2@gmail.com, with "Parish magazine" as the subject, at least three days before the deadline for the magazine.



Barnaby's Community Coffee Shop

For information about news, events and to check opening times visit www.barnabys.coffee

Holy Week 2023 at St Barnabas

Sunday 2nd April Palm Sunday

9.20am Palm Sunday procession leaving from the Village Hall

10am Holy Communion with Bishop Jonathan Frost

Wednesday 5th April

7.30pm Compline said in church

Thursday 6th April Maundy Thursday

7.30pm A celebration of the Last Supper

Friday 7th April Good Friday

10am–11.30am Easter Craft for Children

2pm–3pm The Service of the Cross

An hour's meditation and liturgy led by Bishop Ian Brackley

Sunday 9th April Easter Day

6am Early morning service of Communion

8am Holy Communion

10am All Age Easter Sunday Communion

