

February/March 2023

The **Swanmore** *Link*



Looking to Lent and Easter
Village poets
Shaping Swanmore
Walking from Beacon Hill

Inside this issue

From the churches

From St Barnabas' Church	1
St Barnabas' Services	2
Church news	3
From the Methodist Church	5

Around the village

Village news	7
Swanmore Conservation Group	9
Village Poets	11
Swanmore Parish Council	12
Swanmore Society	14
Local walks	15
The Act that shaped Swanmore	16
Nature notes	20

Around the district

From our District Councillors	21
District news	22
Dates for your diaries	24

Advertisers' Directory	25
-------------------------------	----

Village Directory	40
--------------------------	----

**Deadline for the April/May issue is
Wednesday 8th March 2023.**

**Copies will be available to collect at
The Link from
Tuesday 28th March 2023.**

The Swanmore Link is published by the Parochial Church Council of Swanmore six times a year.

Advertising: John Austin 01489 893409

Distribution: Sue de Vere 01489 892768

Editor: Penny Clive 01489 895923

editor@stbarnabas.org.uk

Editorial team: Caroline Edser, Allison Gurry

Village directory: Roger de Vere 01489 892768

deverer2@gmail.com

Front cover: *Magnolia stellata* flowering in late winter.

Printing managed by Jellyfish Solutions

© Swanmore PCC 2023

Don't forget to feed
your garden birds
this winter.



The Swanmore Link

The Swanmore Link – which is free of charge to all residents – can be collected from The Link (between the church and the Paterson Centre) whenever it is open – generally between 9am and 5pm each day.

You are welcome to take additional copies for new neighbours or any in the village you know who may have difficulty collecting copies themselves.

If you are housebound or disabled and unable to collect your magazine then please contact Sue de Vere who can arrange delivery.

The magazine can also be posted to you at a cost of £11 p.a. to cover postage. To arrange payment please contact treasurer@stbarnabas.org.uk.

Alternatively, the magazine is available to read online at the St Barnabas website (<https://stbarnabas.org.uk/information-hub>). Please contact Gail Norris at the Parish Office (office@stbarnabas.org.uk) if you would like to be alerted by email when the online version is available.

Memories of all kinds

Memories are so important, aren't they, and can bring much joy and laughter as well as sadness. They help to root us in relationships and give us perspective. That's why we take time to remember those who gave their lives for others on Remembrance Day and those we have loved and lost at our annual Thanksgiving and Memorial service.

Now, as spring is upon us, we are looking ahead, enjoying the signs of new life and hoping for a warm summer; but our memories stay with us.

For some people, the memory of painful events, sometimes experienced over many years, can lead to what we call PTSD – post-traumatic stress disorder – and make life almost impossible. Whether stress is caused by a natural disaster, accident or illness, or inflicted on us by others, it has the power to diminish us. No doubt the continuing economic crisis hasn't helped. At times like these, we are grateful for those who remember us when we are in need and thankful for international, humanitarian groups who cross continents to help when disaster strikes.

Thank God, we take stress and trauma seriously. That wasn't always the case. Soldiers with shell-shock

used to be left to their own devices to carry on as best they could. Women, forced to give up their babies because they were young or unmarried, struggled silently for years.

Not long ago, Fergal Keane made a documentary (*Living with PTSD*) about how he succumbed to PTSD after reporting from war zones; a career, he says, which attracted him because of his difficult childhood. It wasn't until his breakdown that he was able to talk about it.

Then along came Nicky Campbell, a well-known TV and radio presenter, revealing his memories of a schoolmaster abusing boys in his presence. It took almost 50 years for him to go public.

As I was pondering on these things, I was reading a book called *The Body Keeps the Score* by Bessel van der Kolk. It speaks of how traumatic experiences affect a person in unimagined ways. Physical wounds can be seen but there are invisible, internal scars too as natural processes are slowed down, damaged or stopped. The body speaks when the voice can't. The body remembers even when the mind has shut down. He often asks clients "*When you were a child, which adults made you feel safe?*" Incredibly, some of them don't understand the question and many couldn't answer it.

The Bible has a lot to say about remembering. Even when the figs fall off the trees and the rivers run dry, remember God loves you. Even when the enemy is at the door and the grapes go mouldy, remember God loves you.

It also has a lot to say about hope: "*But as for me, I watch in hope for the LORD, I wait for God my Saviour; my God will hear me*" (Micah 7.7) and to a small, beleaguered community of Christians: "*Let us hold unwaveringly to the hope we profess, for he who promised is faithful*" (Hebrews 10.23).

Whatever your memories may be, hold on to the hope of new life in Christ Jesus as we move into the Easter season.

Hazel Whitehead



The following contact details may be useful:

Ministry Team: ministers@stbarnabas.org.uk
Nick & Hazel Whitehead on 01489 895327
Jill Phipps on 01489 891117

Churchwardens:
churchwardens@stbarnabas.org.uk

Paterson Centre/Parish Office:
office@stbarnabas.org.uk or 07857 936023

We encourage everybody to continue to pray for the people of Ukraine, for those who have power to work for peace, for those made homeless in the conflict and for all those who are suffering and living in fear.



If you have been affected by the subject matter, there are people who can help you: www.supportline.org.uk 01708 765200; www.assisttraumacare.org.uk 01788 551919; www.childline.org.uk 0800 1111

Services from February to Easter

Sunday 5th February

Third Sunday before Lent

No 8am

10am Holy Communion

Sunday 12th February

Second Sunday before Lent

No 8am

10am Holy Communion – visiting preacher and president tba

Sunday 19th February

Sunday next before Lent

8am Holy Communion with Revd Kathy O'Loughlin

10am Café Church for all ages



Wednesday 22nd February

Ash Wednesday

7.30pm Holy Communion

Sunday 26th February

First Sunday in Lent

No 8am

10am Holy Communion. Do come and meet Canon Anthony Rustell who will be preaching and presiding. Anthony is Director of Ministry for the diocese.

Sunday 5th March

Second Sunday in Lent

No 8am

10am Holy Communion in which Nick will be speaking to Peter Fellows about his voluntary work in a special school.

Sunday 12th March

Third Sunday in Lent

8am Holy Communion

10am Café Church

3.30pm Thanksgiving for Baptism (see p.5 for more details)

Sunday 19th March

Fourth Sunday in Lent

Mothering Sunday

8am Holy Communion

10am All Age Family Communion

Sunday 26th March

Fifth Sunday in Lent – Passion Sunday

No 8am

10am Holy Communion

Sunday 2nd April

Palm Sunday

No 8am

10am Holy Communion. We will be joined by Bishop Jonathan Frost, our diocesan bishop. He will preach and preside. Do come and meet him. Sunday Club meets. There will be a Palm Sunday procession leaving from the Village Hall at 9.20am, hopefully following a donkey.

Wednesday 5th April

Wednesday of Holy Week

7.30pm Compline said in church

Thursday 6th April

Maundy Thursday

7.30pm A celebration of the Last Supper



Friday 7th April

Good Friday

10am–11.30am Easter Craft

for Children. Finishing with hot cross buns and a drink; parents welcome and encouraged to stay and join in.

2pm–3pm The Service of the

Cross. An hour's meditation and liturgy led by Bishop Ian Brackley.

Sunday 9th April

Easter Day

6am Early morning service of Communion

8am Holy Communion

10am All Age Easter Sunday Communion



Lent 2023

Gospel conversations

Join us for a series of studies based on the Sunday gospel readings we will hear during Lent.

In each session, we will look in more depth at the passage and the general themes arising. We will voice our questions and try to answer some of them. We will use a mixture of worship, study, art, poetry and music. No prior knowledge is required. All welcome. If you are unable to attend a group but would like the notes digitally, please let us know.

We begin on Ash Wednesday, 22nd February when we have a service of Holy Communion at 7.30pm. We will use John 8, 1–11 as the gospel reading and think about Jesus' conversation with the scribes and Pharisees.

We will be using our own material and looking at four biblical passages and will meet in a variety of groups to discuss:

- Week one w/c 27th February – A conversation with the devil; Matthew 4, 1–11 (read on 26th February)
- Week two w/c 6th March – A conversation with Nicodemus; John 3, 1–17 (read on 5th March)
- Week three w/c 13th March – Several conversations in the story of the man born blind; John 9 (read on 19th March)
- Week four w/c 20th March – A conversation with Mary and Martha; John 11, 1–45 (read on 26th March).

There will be details about where and when groups meet in the Link, in the weekly email, in the pew sheet and on the website so please have a look and sign up for one.

There are currently groups meeting on Friday mornings, Wednesday evenings and Monday lunchtimes but up-to-date information will come soon. We are limiting the groups to six to allow everybody to participate and, with so many options of dates and times, there should be something for everyone.

Hazel Whitehead

Changes at St Barnabas

One in, one out!

It's that time of year when ordinands and curates go elsewhere on placement as part of their training. Why? So that they can experience a different context or style of ministry, widen their horizons and learn new ways of doing things.

With mixed feelings, we wave Jill Phipps off to St Luke's, Southsea where she will be joining Revd Annie McCabe and the team from the beginning of February to the end of April. Check out their website to learn more about St Luke's history and setting: www.stlukessouthsea.church.

And for the month of February, we will be welcoming Revd Matthew Grove from the Portsdown Cluster. Matthew is interested in seeing how church works in a more rural, village setting than he is used to and will be joining us on Sundays and meeting people during the week. Please look out for him and make him welcome.

If any of this sparks a germ of interest in you and you'd like to find out more about forms of authorised ministry, do get in touch with Nick or Hazel.

Hazel Whitehead

Introducing Revd Matthew Grove

I was born and bred in Hedge End and lived there most of my life until starting my curacy in the Diocese of Portsmouth in 2020. I am currently in the third year of my curacy at Christ Church Portsdown and St Johns Purbrook. I have four children and am divorced.

Although I might have described myself as a Christian for most of my life, it wasn't until my early 30s that faith became real to me and impacted on how I lived my life and why, a few years later, I initially started to explore a call to ordained ministry.

This led me back into education and I started studying in the evenings for three years before reading theology, religion and ethics for two years at the University of Winchester. After being recommended to train for ordination I moved to Wycliffe Hall in Oxford for a further three years, where I finished my degree.

During my curacy I have continued in my study of theology, recently completing a masters degree and training as a spiritual director. I look forward to furthering this with some research that I am starting in April, working towards a PhD back at Winchester.

However, I think we often learn from experience what can never be



taught. For me, times of difficulty and struggle have eventually become the times that have reminded me most tangibly of God's provision and purpose. This has ultimately drawn me ever more closely to Him and to a deeper awareness of His love and grace. This is then the foundation through which I come to minister that gospel of grace to others.

I very much look forward to my time with you at Swanmore, as I hope to broaden my experience of traditions and indeed of a more rural ministry.

With love and best wishes,

Matt Grove

St Barnabas social events

Triumphant return for BLOW and debut of Beati

The Christmas saxophone concert by the BLOW Ensemble was a huge success on 9th December. The church looked stunning and the music was brilliant.

During the performance the musicians took the time to enlighten the audience with a talk about the different types of saxophone; it was

fascinating, especially as it included a demonstration of the rarely heard bass saxophone. Somewhat surprisingly there is an even bigger one – the contrabassoon – but that is probably best used for communicating with whales in the deep ocean !

It was a thoroughly enjoyable evening and they will be back on

Saturday 9th December this year with another great Christmas concert.

At the time of going to press we are eagerly anticipating our second concert in church. On the 28th January the superb Beati choral group will be performing an evening of unaccompanied music and readings on the theme of love. The music planned will span 500 years from Monteverdi to Cole Porter, Dowland to Billy Joel. It promises to be a wonderful night of music and singing.

John Sharpe



St Barnabas social programme for 2023

24th February: Family Quiz

You're "Family Quiz and Pudding Night". Teams of up to eight people with a 7pm start at the Paterson Centre. Questions for all ages.

Tickets at £5 adults and £2 children (under-16) are available from Sarah Woodman (07771 801579), John Sharpe (jsharpe2016@hotmail.com), after 10am Church services, at the service hatch beside Barnaby's on the 4th, 11th and 18th February or on Eventbrite "St Barnabas Swanmore".

Bring your own nibbles and drinks, puddings will be provided.

18th March: Beetle Drive

6:30pm start at The Paterson Centre. This is a family fun evening where we all sit on tables of four in pairs and throw dice to draw various bits of a beetle. The first couple to complete a beetle wins that round. We all tot up our scores and then one couple from each table moves to a different table and, of the remaining couple, one moves one place round the table; that

way we all play with a different partner in each round. There are 12 games on a card with a prize at the end of the evening for the one with the most points and a boobie prize for the one with the least.

This is a fun evening and so the cost is low at £2 per adult, £1 per child (under 16) and a maximum £5 entry per family! Bring your own nibbles and drinks. Tickets from John Sharpe (jsharpe2016@hotmail.com), after 10am church services, at the service hatch beside Barnaby's on 4th, 11th and 18th February and 4th March.

22nd–23rd April: Open Gardens

Tickets are £6 (under-15s free) available on the day at the Paterson Centre. There will be some new or completely revamped gardens this year, free park and ride, and plant sales, plus the usual super teas and homemade cakes.

John Sharpe

● **8th May: Royal Tea** – join us to celebrate the Coronation.

● **17th–18th: June Open Gardens** – see April details.

● **16th July: Teddy Bears' Picnic** – games in churchyard and Paterson Centre.

● **9th September: Film Night** – includes supper at the Village Hall, fancy dress, sing and dance.

● **7th October: Beer and Hymns** – includes favourite singalong songs and supper.

● **28th October: Light Party** – with tea

● **18th November: Oh Heck** – a fun evening of cards with a fish and chips supper.

● **9th December Children's Film afternoon** – includes a sumptuous tea and possibly a glimpse of Santa.

● **9th December: Christmas Saxophones** – different tunes but the same mix of brilliant music.

World Day of Prayer 2023

The World Day of Prayer is an international inter-church movement led by Christian women which enables us to hear the aspirations, issues and prayers of women from all over the world. We would love you to join us at this year's service at 2pm on Friday 3rd March at St Mary's and All Saints Church, Droxford.

The speaker will be Geoff Page who will share with us his work as a trustee of The Rowans Hospice. All are welcome – not just women, but men and children too.

This year's World Day of Prayer has been created by the women of Taiwan, reflecting some of the geographical, political and social challenges they negotiate daily. It will travel across more than 120 countries beginning in Samoa before returning there 38 hours later.



Please join us for this enlightening service, followed by afternoon tea. We look forward to seeing you.

Rita Newman, Chair
01489 877204 or
07958 72265

From the Registers

Baptism

8th January – Sebastian
Heathcote Angell

Thanksgiving for Baptism

On Sunday, 12th March, we are holding a special, informal "Thanksgiving for Baptism Service" at 3.30pm with tea to follow at 4pm.

If your child has been baptised at St Barnabas between 2019 to the present time, you should have received an invitation. However, this service is open to everybody.

We will be going on a pilgrimage around church to remind ourselves of the meaning of baptism.

Inspiration from unusual places

It's a funny thing: I had been wanting to write this article earlier in the week but had no idea whatsoever as to what to talk about. I went for a bike ride yesterday, and bam! Inspiration hit me out of the blue. And when I say "inspiration", I mean "a van", and when I say "out of the blue" I mean "in a hit and run". It's the first time I've been hit by a van or been involved in a hit and run; I can't say that I recommend it. As I was in the air, I thought to myself, "I've heard that it's not the impact with the vehicle that kills you, it's the impact with the road... This is going to hurt." Thankfully, I landed in the muddy verge, and got away with no broken bones.



There were two things that I took from it all (excluding a sling from the QA). First of all, I was deeply touched by the extraordinary kindness of strangers. Two ladies stopped to look after me on the roadside, and were so compassionate interrupting their days to make sure I was all right and to get me and my bike home. A few people commented to me that it was rather like a modern rendition of the parable of the Good Samaritan and I can see the similarities – they didn't know me from Adam, but they ministered to me simply because it was the right thing to do. If either of you are reading this, let me say a heartfelt thank you to you.

The second thing I draw from it is something about the nature of forgiveness. You see, I bear the driver of the van no ill will. On the contrary, I have been praying that he or she is blessed by God and knows His love, peace and kindness.

I don't write this to make out that I am some sort of saint, or to boost some perception of my holiness. It's quite the opposite, in fact. The Bible teaches that we ought to love others as Jesus loves us; and He showed His love by coming into the world not only to teach about God's love but also to show it by dying on the cross and forgiving our wrongdoings. I forgive the van driver the small sin of a hit and run because I have been forgiven all of my many and varied sins by Jesus, and I want to follow His example.

My wounds are healing well but I'll probably have some scars on my knee. And that's alright, because those scars will remind me of the love of strangers, and the love of God. May you know that love (without the van) today and always.

Revd Phil Griffin

Lent Lunch at Swanmore Methodist Church on Monday 27th March at 12.30pm



Home-made soup and
crusty bread

Donation for
Christian Aid appreciated

For details please contact Mavis Daniels
Email: mavisdaniels@talktalk.net

Swanmore Methodist Church

Chapel Road, Swanmore, SO32 2QB



Minister: Revd Phil Griffin
Tel. 01329 833518
Email: rev_phil@outlook.com

Loving God Loving our community Making disciples for Jesus

Sunday Services in February and March

All services will commence at **10.30am**.

5th February	Revd Andrew De Ville – Church Anniversary and Holy Communion
12th February	Stephen Freemantle
19th February	Kathy Elvy
26th February	Peter Castle
6th March	Revd Phil Griffin – Holy Communion
12th March	Mark Chester
19th March	Tom Banks
26th March	Graham Barber

There will be a warm welcome for all who wish to join us for these services and please stay for tea and coffee afterwards

In need of Prayer?

Place your prayer request in the post box on the wall next to the Chapel entrance, add your contact details if you would like a visit and we'll be in touch, or visit our website.

Thursday Fellowship

We hold a Fellowship meeting every Thursday 2.30pm–3.30pm – an opportunity to meet with fellow Christians for prayer, Bible reading and discussion. Meetings are held via Skype and once a month in person in the Church. If you would like to join us please contact Jill Letts – 01489 896182; email: jill.letts@hotmail.com

Coffee Company

Weekly on Tuesdays at 10am to 12 noon. Enjoy company, coffee, tea and biscuits/craft; if you would like to bring knitting/sewing etc. or just come along for a chat we will be pleased to see you.

TLC (Tuesday Ladies' Club)

14th February at 7.30pm – The role of the hospital chaplain
14th March at 7.30pm – Travel along the Cheshire Ring with Carol Watson
All ladies welcome – non-members £3 per meeting

Men's Group

Thursday 16th February at 7.30pm – To be arranged
Thursday 16th March at 7.30pm – To be arranged
All are welcome and there will be light refreshments.
For further details contact Martin Letts on 01489 896182

Looking for somewhere to hold an event?

Our premises are now available for hire. Please visit the "Use our venue" page on the church website for details or email: swanmoremcleettings@gmail.com

Christmas lunch

A great time for all and thanks for generosity

Swanmore Methodist church was able to support 26 people from Swanmore and surrounding villages (including helpers) with companionship, lunch and a present as they would otherwise have been alone at Christmas.

Following mulled fruit juice and blessing of our food by Mary Morfill, everyone ate their fill. Typically, more food was provided than everyone could eat – even with food parcels for those attending – so excess food was taken to Portsmouth Homeless Shelter and the kind donations from everyone were not wasted.

Post meal, carols were sung – supported by Monica Simpson – before we heard the King’s “first” Christmas speech.

There are many people to thank. Swanmore Parish Council for their donation to the event, Owton’s for supplying the meat, Hill Farm for the apple juice, Garson’s Garden Centre and Park Place Farm Nursery for their donations.

So many people helped make this event run well, from Kathleen Moorhouse who contacted everyone; the Parish Council; suppliers and

attendees. The cookery club children, organised by Mavis Daniels, who made Christmas puddings; Jill Letts who made mince pies for everyone attending and Sally Ann Smith who made Olafs, reindeer and Santas out of sweets for gift bags.

The children of Swanmore Primary School who made Christmas cards for all those who came, Christmas decorations for their trees and beautiful fir cone table decorations – all were gratefully received.

Thanks, too, to the band of volunteers who set up, prepared the vegetables and cooked, which made this Christmas lunch a real community effort.

In addition, £135 was donated at the lunch, which was split between Bishop’s Waltham Minibus and Crisis at Christmas

A special “thank you” is also due to my husband and children who supported me with Christmas lunch.

Helen Currie

Below: Apple juice and gift bags – and apologies from Helen for forgetting to organise more photographs!



In memoriam

Sidney Elliott

Former Swanmore resident Sidney Robert Elliott (son of the late George and Emily Elliott of Broad Lane) died peacefully on Christmas Day at his care-home in Bishops Auckland.

Sid was born in Swanmore in 1941 and spent some of the war years in Scotland and Portsmouth. He moved back to Swanmore from Portsmouth with his family in the early 1950s to live with his grandmother and grandfather (Annie and Sid Wearne) in Chapel Road. Sid attended Swanmore Church of England School and was a leader for the Swanmore Scouts for several years.

While growing up, Sid helped his father, mother and two brothers build their bungalow, named “Jesmonde Dene”, in Broad Lane before working in the construction industry both in England and overseas. Sid was a keen fisherman and amateur artist, always willing to help others and share his colourful stories.

Sid went to live in Bishop Auckland in County Durham where he met and married Margherita, who died in August 2021. They leave a daughter, Maria, and son-in-law, Gary, who live in Bishop Auckland. He is also survived by his brother Stewart and family. The funeral took place on Thursday 19th January in Bishop Auckland.

Pam Elliott

Poppy Appeal 2022

Thank you to all who contributed to The Poppy Appeal last November. As a village we raised an amazing £3,185.10!

A special thank you to all the volunteers who give their time to go out to our homes in support of the appeal, the village shop, pubs and schools. Thanks, too, to Barnaby’s which raised an additional £125.

If you are interested in collecting for the next campaign, I’d love to hear from you.

*Wendy Horn, 07821 236480
Poppy Appeal Co-ordinator*

Volunteering

Our village needs you!

Appeals for volunteers last year were successful with new offers of help for the Care Group and Lunch Club – but more assistance is still needed by our village organisations.



Can you help our children improve their reading?

The Primary School has some children throughout the school who would benefit from reading more regularly. Regular support to develop fluency and the opportunity to talk about the books they are reading will have a huge impact on their progress and, as a result, on their life chances.

Reading is a key life skill and one that we are determined to impart to all our children. However, we need help to achieve this. We are looking for volunteers to help give children extra support with daily practice reading out loud.

Generally, afternoons are preferable (any time from 1.15pm), although we can accommodate mornings. If you are able to commit to a regular time this would be a great help in order for the children to build a relationship with you and enable you to see the progress they are able to make over a period of time. While a couple of hours of support weekly would be great, if that is too much, we are also looking for a team of people who can come to school at 3pm and give us a regular half an hour slot.

If you are able to help us, we would be extremely grateful. We have a booklet to help volunteers with how to support the children's reading. However, I am more than happy to answer any questions volunteers may have about the process.

A safeguarding DBS check will need to be completed before people can help in school but our office team can help you with this process. Please

ring the school 01489 894555, email adminoffice@swanmore-pri.hants.sch.uk or call in at the office if you are interested in volunteering.

*Mrs J Hughes
Early Reading and Phonics Lead*

More committee members needed for the Village Hall

Swanmore Village Hall is a vital community asset run entirely by volunteers and its management committee is much in need of new members.

Day-to-day functions, such as bookings and cleaning, are under control but more help is needed with financial planning, managing maintenance projects, marketing and, as a registered charity, ensuring compliance.

The committee usually meets every two months so please get in touch if you would like to find out more about how you can support this essential village asset.

For more information contact Jon Woodman 07768 661606 or email: swanmorevillagehall@gmail.com

What about helping the Beavers?

Beavers have a great learning experience and much fun. There is, however, a long waiting list due to the lack of adult support.

If you want your child to join in why not volunteer to help? Contact: swanmorebeavers@gmail.com

Roisin Smith



Get ready for the twinning quiz

Swanmore Twinning Association will be hosting a quiz on Saturday, 4th March in the Paterson Centre. Starting at 7.30pm, there will be teams of eight at £12.50 per person, which includes a pizza supper, and there will be a raffle on the night. Bring your own drinks.

For more details and to reserve a table please call Lorna on 07963 809888 or email lornajneill@hotmail.com.

Lorna Neill

Grants available

Cash for projects

Winchester City Council is offering grants to not-for-profit organisations that benefit the community.

The "District Small Grants" scheme offers up to £1,000 for one-off pieces of expenditure on projects, equipment and other items that will help an organisation to do more, to reach more people, to provide better services or to try something different. These grants can also be used for organising events such as Coronation celebrations.

The "Cost of Living Grants" scheme provides £1,000-£5,000 to not-for-profit organisations for such activities as:

- Increasing access to cost-of-living-related support.
- Providing information and support to reduce costs.
- Increasing social interactions to help reduce anxiety and improve social inclusion in warm spaces.
- Helping to access essentials such as food or clothing.

Applications must be made by 28th February 2023 and full details are available at: www.winchester.gov.uk/grants-for-not-for-profit-organisations

Swanmore Conservation Group

Concerns about the pond – and all those goldfish

Our December work party was cancelled due to the weather, which had been pretty grim but the Conservation Area has survived quite well. The Lower Meadow has been really wet in the corner where Broad Lane meets Lower Chase Road; however, during the really cold spell the ground froze, which made walking easier.

The hoggin paths have kept reasonably dry although the path through Green's Wood has had large puddles in several places after prolonged periods of rain and there have been quite large areas of standing water under the trees alongside the path as well.

The pond continues to be a big concern for our group as it is rapidly filling up with dead leaves and large areas of matted roots formed by the reeds, irises and water lilies. The work parties try as best they can to keep the edges clear, which is possible – to an extent – from the rough path around the outside.

More serious work, such as removing the excess plant growth and checking the state of the liner, is beyond our capabilities. Two of our more intrepid members do get into the pond occasionally and remove small amounts of root growth but to keep plant cover down to the recommended third of the surface area really requires experienced contractors with heavy machinery.

Many years ago someone released a few goldfish into the pond. Goldfish originate from East Asia but without any natural predators their numbers have exploded. Some work was done in 2013 by a contractor working for the Parish Council, when vegetation was removed, and although many goldfish were removed some obviously remained and continue to flourish and increase in number. Their presence puts native wildlife at risk

and although we see newts, frogs, toads and dragonfly larva in the pond from time to time they are quite few in number.

Hopefully 2023 will see major works on the pond to prevent the vegetation taking over completely.

We meet at the hut in the Lower Meadow on the second Saturday of each month (11th February and 11th March) from 9.45am to 12noon, with a break for coffee and biscuits at 11am. You won't be expected to do any tasks that you are unable or unwilling to do so no need to bring your waders! Join us if you can, all help gratefully received.

Gill Sawyer
01489 894206

Below: Clear water running out of the pond.

Beneath: The overgrown pond. The bottom is full of leaves and sediment with branches and rubbish thrown in.

Bottom: The water feed for the pond passes through a leaf trap (the diagonal line of posts) which move most of the leaves to one side, allowing the leaf-free water to pass through. There is a row of stakes by the footbridge and another row at the entrance to the pond to trap any leaves that escape the leaf trap. It does not prevent mud being brought down which then settles in the pond.

Photographs by Pete Mason



Village poets

A talent for words

The most famous Swanmore author – Stephen Leacock – left the village of his birth for Canada aged six in 1875; but, it seems, we still have some skilled wordsmiths among us – two of whom have just produced books of their work.

Graham Langley

Graham Langley has been writing and performing his poetry for years and has had several poems published in magazines. His material draws from life and he is particularly interested in the foibles of human existence and how people treat or mistreat each other. He has just produced a new book, as he explains:

“I have been writing poetry and song lyrics for almost 50 years. In the days of punk I found a platform for performing live and over the years I have probably appeared in nearly a hundred locations, from festivals and folk clubs to music events, on radio, at weddings, in poetry groups and in schools, pubs and churches. I've shouted poems in the street at Winchester's poetry festival and read



Graham reading his poetry at The Railway inn.

quietly in libraries; in fact anywhere where I can be heard. I self-published three books in the last century and had my lyrics recorded by musicians. I recently had the bizarre experience of listening to a new version of one song dating from the 1980s remixed as an Ibiza-styled dance track!

I moved to Swanmore in 2018 and I love it. I started performing again and found myself writing a large body of new material. It became apparent that I should put it into an accessible format so began compiling a book bringing together the “best of” (i.e. the work that has stood the test of time) from the first books and adding recent work. It has 46 poems probably in a 50/50 split old and new.

As the first three books were titled *No Words, No Title and No Wonder* I kept the theme going and *No Idea* is now available. As I write poetry I am thinking “how will this sound live?” as much as “what will it read like?” so I have also recorded nine poems on YouTube which can be found by searching Graham Barrie Langley Poetry Live.”

- Graham launched his latest book at Poetry Platform at *The Railway Inn*, Winchester on Tuesday 17th January and he also has a host of readings around Hampshire planned for coming months.
- *No Idea* is available from Graham at 1 South Downs Close (hidden behind *The Brickmakers*), or call 0776 1200709.
- The price is £10 but he is offering it at £8 to anyone who reads about it in *The Swanmore Link*.

“The Bear”

by Graham Barrie Langley

The valley was lush, the rivers flowed clear
We faced West, towards the setting sun.
It seemed there was nothing to fear
Nothing to hide from, no need to run.

The cherries were red, the apples sweet
The crops that we planted grew tall and full
We always had enough to eat
Life was simple: almost dull.

We knew behind the house the wood was dark
We warned our children to beware
That it was home to a fearsome bear.
We lived here and it lived there.

But last month the bear appeared at the edge
It stared at us over the hedge
It prowled behind the flimsy fence
The wall we built was no defence

And now it's wandered in unwelcome
Scratching at the kitchen door
We don't know what it wants or why it came
Pawing with its mighty claw

It's bared its teeth, it shakes and roars
And now it's in the living room.
It pads around on massive paws
We're trapped inside our last bedroom.

The neighbours offer help as best they can
They shout and wave our flag of blue and gold
The stench of the bear fills our land
Friends urge us on to stand up bold.

But even if the bear retreats
Can we be free a second time?
Can our children ever play in streets
That once saw such invasive crime?
Even if we win
The bear will still be there.

Swanmore
28th February 2022



Martin Letts

Martin Letts will be well known to many in the village – either as a regular pantomime dame in Swanmore Amateur Dramatic Society productions or from his work with the Methodist Church and Waltham Chase Repair Café.

Over the years he has also been an enthusiastic versifier. So much so that for his 80th birthday last year, his two daughters produced a book of his poetry that they called *Reflections of an Old Hampshire Rustic*.

Martin says that it was the best present he could have wanted and promptly ordered more copies, which he is selling at £6 each in aid of Hampshire Home-Start. The copies cost him £4 each so Home-Start gets £2 for every copy sold.

He has already sold around 50 copies – so if you would like one contact Martin at 01489 896182 or email mletts@talktalk.net

“Hospital Confusion” by Martin Letts

My goodness – at the hospital
I really get confused.
I see the stairs and corridors
Which one shall I choose?

There’s pictures and there’s notices
They all the walls adorn.
There’s briskly strutting medicos
Grey patients look forlorn.

I look about, I scan and scout
My searching it is done.
At last I’ve found the café
For a coffee and a bun.



Barnaby’s

Classic Cars dates for 2023

Barnaby's Coffee Shop, in partnership with yeomansyearbook.org.uk and Swanmore Parish Council, has confirmed dates for its very successful “Classic Cars at Barnaby’s” events for this year.

In 2022 car owners from as far afield as Bosham, Winchester, Guildford and Lymington came to Swanmore with their much-loved classics – from Austin 7s to E-Types.

The dates for 2023 are:

- Saturday 22nd April
- Saturday 27th May
- Saturday 24th June
- Saturday 22nd July
- Saturday 26th August
- Saturday 23rd September
- Saturday 28th October

If you own a pre-1995 classic car, here is your chance to show it off,

meet fellow enthusiasts, and have a look at other peoples’ cars. Around 50 cars are expected at each event, which is held in the village car park opposite St Barnabas’ church.

Each event opens to the public at 10am, so if you are bringing a car please arrive any time from 9.45am when a marshal will direct you to a space where it can be displayed. There is no need to pre-register. Full details are at www.barnabys.coffee/classiccarssummer or contact Barnaby's direct on 01489 854490.

The event will be supported by Barnaby's "popup" coffee shop, serving coffee, tea and home-made cakes from our friends at Bishop's Waltham Country Market.

Barnaby's will nominate a charity on the day, and all the proceeds from the “popup” will go to that charity. Beneficiaries last year included the Jubilee Sailing Trust, Meon Valley Food Bank, Helping Hooves, South Central Ambulance Charity First Responders, and St George Foundation.

Alastair Walton



Classic Cars seen at the events in 2022.

New play equipment at New Road Playing Field

We started a project to improve our recreation areas in May 2021. The first stage was to consult residents about the improvements they wanted. The results were then analysed and a three-year action plan developed.

The lack of facilities at New Road Playing Field for younger children, as well as for older children who didn't want to use the skate park or pump track, was highlighted during the consultation process, so the decision was made to remove the old run-down pieces of play equipment and replace them with three pieces that were suitable for all ages and abilities.

We want our recreation areas to be completely inclusive, so that all members of a family can enjoy visiting together. As well as this new equipment, over the last year or so we have added additional seating, which was requested by our older residents, we converted the old BMX track into a pump track which is used by people of all ages, and we have resurfaced the popular zip wire.

Over the next year we are focussing on improvements to Swanmore Recreation Ground as well as installing equipment at Medicott Way. We are also going to explore if there are any other locations in the village that would benefit from play equipment.

SPC Meeting Dates

Council meetings are open to the public and are held in the Parish Office, usually starting at 7pm

7th February – Planning and Highways Committee

21st February – Open Spaces and Amenities Committee

28th February – Finance Committee

14th March – Planning and Highways Committee

21st March – Open Spaces and Amenities Committee

28th March – Full Council

30th March – Annual Meeting of the Parish (Swanmore Village Hall)

Please contact the Parish Office if you would like more information.



Out with the old...



...in with the new



The pump track installed in 2022

Fly-tipping

Our Accredited Community Safety Officer Gary McCulloch has been working in partnership with Winchester City Council's fly-tipping team to help deter fly tipping, as part of a county-wide strategy.

Gary is focussing on our local area and is part of the information and intelligence gathering effort, using cameras.

He has been given eight trail cameras initially and will be deploying these at the worst-affected areas which give the greatest chance of catching the offenders.

The cameras have been up and running for around two months now. There is always going to be an element of luck with these types of operations, so we are very pleased to report that Gary has passed on enough evidence for Winchester City



Parish Council Office

Tracey Molloy
Executive Officer
Hollythorns House, New Road
Swanmore, SO32 2NW
Tel: 01489 890651
Email: clerk@swanmorepc.org.uk
Web: www.swanmorepc.org.uk

**PUBLIC OPENING TIMES
WEEKDAYS 10am-2pm**

Please contact us by email, letter or phone, or visit us at the office.

Save the date

**Annual Meeting of the Parish
30th March 2023 at 7pm
Swanmore Village Hall**

This year we are asking for your help in planning the Parish Council's longer-term priorities. We shall have our local "Sustainable Waltham Chase and Swanmore Group" there to talk about how we can help to tackle climate change and conserve our local biodiversity.

Please do come along, enjoy some refreshments and catch up with the Parish Council.

Council to move forward with two fly-tipping prosecutions, one in Swanmore and the other in Owslebury.



Swanmore Pre-school

Making the most of the very wet weather

Swanmore Pre-school hosted a very successful Christmas party raising money to support the Pre-school. Many thanks to all that made this a great event. We also put on a small performance in the church during the festive period that was enjoyed by many families. Thanks to Jill for her support.

We returned in January to a lot of wet weather but this did not stop us from exploring the outdoors and making the most of the learning opportunities that nature can offer. We learnt what resources can be used to collect water, how best to transfer water and – of course – lots of splashing in puddles.

We have been paying close attention to the bugs and birds in our nature area and making bird food for the wild birds that visit our gardens. We are looking forward to watching caterpillars turn into butterflies in the spring and planting our garden.

We have begun our half-termly visits to the school library to enjoy a story with school librarian Mrs Cole; she also comes over to us sometimes as she loves reading stories and is very good at it. We will be hosting a race night and an open afternoon in the spring, dates to be confirmed.

If you wish to make an enquiry regarding a place at Swanmore Pre-school, please tel 0795 8436396 or email sarah.hiscock@swanmorepreschool.org.uk

Sarah Hiscock

Below: Esme and friend playing with water. Bottom: Abi Cole reading the children a story.



Swanmore Society

Tales from the archives and Roman riches

At our November meeting, local history expert and writer Barry Shurlock's talk "*Hampshire Stories from the Archives*" lived up to its title, providing a series of fascinating vignettes concerning lesser-known or forgotten aspects of our county's rich heritage.

Among them, we learnt about socialist reformer Robert Owen's failed attempt to set up a commune at Queenwood Farm near Stockbridge in the 1840s, and that Peninsula Barracks in Winchester is all that remains of a grand palace designed by Christopher Wren for Charles II.

Closest to home, one Arthur Helps was instrumental in bringing the railway to Bishop's Waltham in the 1860s and planned to open a Royal Infirmary in the town but went bust before it was completed. However, the building later became a Catholic Seminary and then a Police College before it was demolished to make way for housing in the 1990s. Other topics covered included the establishment of the National Census by John Rickman, who hailed from Christchurch, and the history of the *Hampshire Chronicle*, celebrating its 250th anniversary last year.

Along the Fosse Way

In December, our own Crawford Wright demonstrated his passion for Roman history with a highly illustrated talk on the Fosse Way. Deriving its name from the Latin *fossa* meaning ditch, this road linked major Roman settlements at Exeter, Ilchester, Bath, Cirencester, Leicester and Lincoln.

It is testament to the skill of its military builders that the Fosse Way can still be followed today almost in its entirety, in some stretches as the foundation for modern A and B roads and in others as country roads and farm tracks. Crawford's photographs showed us some of the rich Roman

remains discovered all along the route. Those at Bath are perhaps the most well-known but beautiful, sophisticated mosaics can be viewed at Cirencester and Lincoln, and the villa at Chedworth is among the largest in Britain and well worth a visit.

Looking ahead

Our meetings restart on 8th February with a talk from Carol Watson, whose twin loves of photography and hiking have taken her all over the world. She will share with us one of her "home adventures", combining two of Scotland's classic long-distance routes, the West Highland Way and Great Glen Way. The former runs from just north of Glasgow to Fort William, and the latter from there to Inverness, a total of 175 miles through the splendid scenery of the Highlands.

In March we have our AGM on the 22nd and are reverting to our pre-covid format, with the necessary business part of the meeting followed by cheese and wine, and entertainment provided by members of SADS. Both events start at 8pm and are being held in the Paterson Centre on Church Road. Visitors are welcome but only members will be able to vote at the AGM.

Caroline Clapperton, 01489 891447

Right from the top: The West Highland Way; Part of the Orpheus Mosaic in Cirencester; The Fosse Way at Ashley. Below: Wren's design for Charles II's palace in Winchester that was never completed.



Local walks

From Beacon Hill via Betty Mundy's Bottom and Lomer

This walk starts from Beacon Hill and includes sections of the Wayfarer's Walk and South Downs Way.

Distance: 5.1 miles (8.2 kms). Time: 2 hours at a leisurely pace. There are four (possibly six) stiles.

Terrain

The circular walk has varied terrain, starting in fields with views to Old Winchester Hill and the Isle of Wight, then pleasant woodland, continuing on the Wayfarer's Walk and South Downs Way in fields and on tracks. It is walkable in all but extremely wet conditions.

Start

The walk starts from the car park at Beacon Hill, a 15 minute drive from Swanmore. Travel up Hampton Hill and Park Lane, turn left into Shepherds Farm Lane and straight across at the cross roads into Beacon Hill Lane. The car park is at the top in the trees (SU598227).

1. From the car park along Beacon Hill Lane (1.1 miles)

From the car park, walk south towards Sailors Lane on Beacon Hill Lane and turn left, then right at The White Way (watch for traffic on these bends).

Almost immediately there are gaps in the hedge line leading to permissive paths on either side of Beacon Hill Lane. The one on the right provides extensive views across fields to the Isle of Wight (and Fawley oil refinery). Walk on the edge of the field alongside the lane, cross Lone Barn Lane and continue until you reach the corner of the next field.

Look for a double farm gateway on your left and a fingerpost pointing to your right.

2. Beacon Hill Lane to Sailors Lane (1 mile)

Take this path to your right along the hedge line on the edge of the field. Half way down the field the path goes

through the hedge and continues along the hedge line to the corner of the field. Go straight ahead into woodland in Littleton Copse. The path bends round to the left then shortly turns right round a small field.

Continue straight ahead through

the copse to reach Sailors Lane.

3. Sailors Lane to Lomer Farm (2 miles)

Cross Sailors Lane onto a path into a field beside a wood. At the bottom of the hill turn right onto the Wayfarers' Walk and follow the bridleway across the middle of the field.

Go through the gate straight ahead and follow the path around the fence of Betty Mundy's "Cottage" (a mansion!). This is Betty Mundy's Bottom. At the end of the grounds, go through a gate into a field. Go straight ahead following the edge of the field, go left at the corner up a hill and look out for a gap in the hedge on the ▶



Around the village

The bridleway across the field towards Betty Munday's Bottom with the gate straight ahead.



right. Go through the hedge line, over a stile, across a track and through a farm gate into the next field. Follow the hedge line on your left until you see a stile. Go over the stile, through the hedge, over another stile and bear diagonally right across a field to a large pair of farm gates. Climb the stile on the left of the gates and turn left onto a track.

At the top of the hill, bear right (no entry to the left) and descend to a large field. The double farm gates are usually open unless there are cows in the field when there is a stile on the right. Follow a grass track in the field bearing slightly right to another gate and stile. This gate is also usually open. The track leads directly to Lomer Farm.

4. Lomer Farm back to Beacon Hill (1 mile)

At Lomer Farm turn right onto the South Downs Way. At the end of the farmyard turn right, continuing on the South Downs Way. This track goes all the way to Beacon Hill Lane. Look out for the remains of the medieval village on the right where a track goes down to a house. At the end of the track, go through a gate and along the lane back to the car park.

Alternatively, there is a permissive path on the right just before the gate which follows the lane on the other side of the hedge and comes out in Sailors Lane.

David Street

From the archives

Swanmore land enclosures

How an 1855 Act shaped the village

The Swanmore that we know today is largely a product of land enclosures. Upper Swanmore had been enclosed in the sixteenth century, producing the field structure that we see today, together with several roads including Hampton Hill and Vicarage Lane. Green Lane at the top of Vicarage Lane was the original road to Droxford from Swanmore and Bishop's Waltham.

Until the nineteenth century, much of Hampshire was common land where the labouring classes could graze cattle, allow pigs to forage in the woodlands, and also gather firewood. They worked the land in strip field systems that had changed little from medieval times. During the eighteenth and early nineteenth centuries, improvements in agricultural practice and industrialisation had brought a

rapid increase in Britain's population: in England it had more than doubled from 5.75million in the 1750s to 16.7million by 1851.

A massive increase in food production was needed with the new railways providing a quick and efficient means of moving agricultural products to the centres of population. Land that could be farmed economically was essential, while the introduction of a wide range of agricultural machinery required large areas, rather than the mediæval strips, to operate efficiently. The result was a growing number of Enclosure Acts affecting much of Southern England and in 1851 work began on enclosing land in the parish of Droxford – which then included much of Swanmore and Shedfield. The Droxford Enclosure Act was finally passed in 1855.



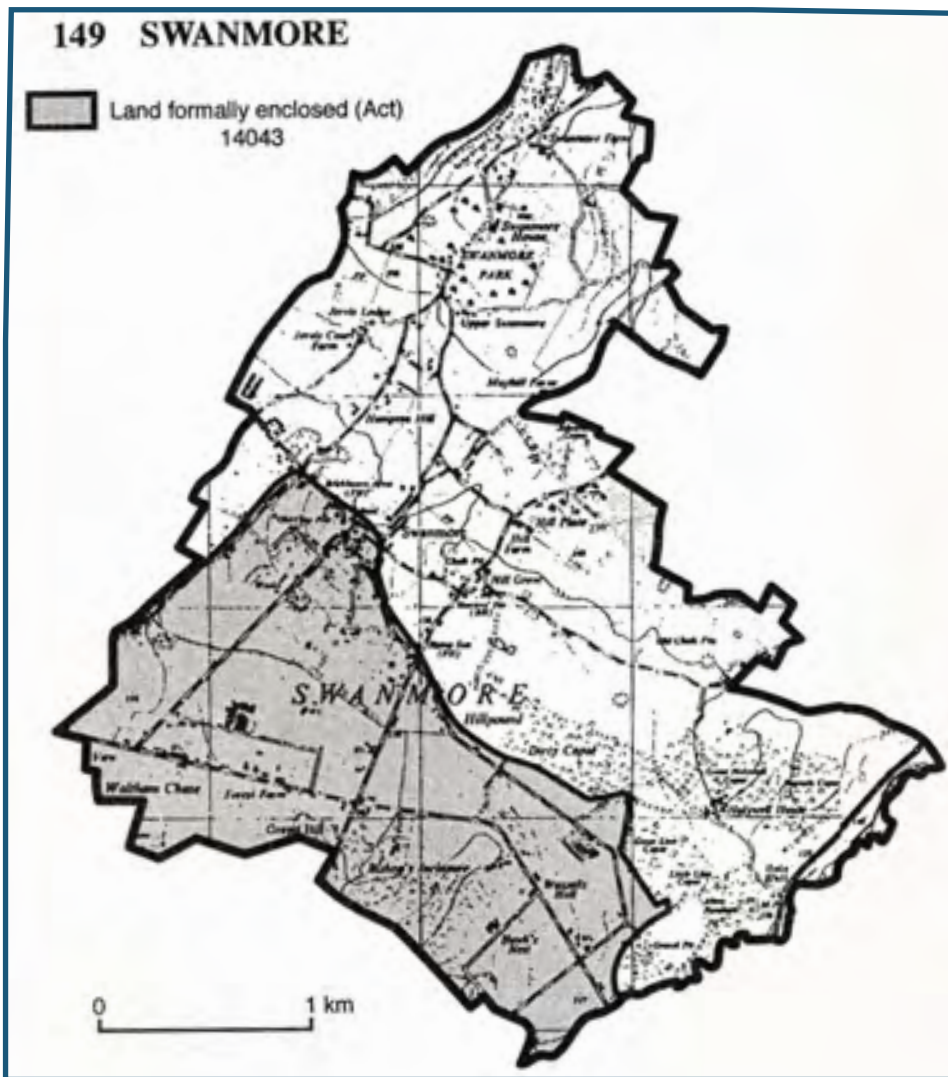
The map above, from the 1810 Ordnance Survey, shows Swanmore before the 1855 enclosure.

The road from Bishop's Waltham comes to Swanmore Gate at the bottom of what is now Hampton Hill. The turning just before that (above the "r" in "Swanmore Gate") is what is now called Hampton Hill Lane, previously known as Gervys Lane which continued up to Hampton Hill.

Hampton Hill (previously known as Holts Lane after a sixteenth century

landowner) leads up to Well Lane (on the right), what is now Jervis Court Lane and what was the main road to Droxford (now the Green Lane bridleway) in a pattern of roads that have been largely unchanged since the area was enclosed in the sixteenth century.

South of what is now Church Road (previously known only as Hoe Lane and Dod Lane) the land enclosed by the 1855 Act is shown as heath with some woodland.



The area in Swanmore covered by the 1855 Droxford Enclosure Act. From Chapman & Seeliger: "A Guide to Enclosure in Hampshire 1700-1900".

The Bricklayers Arms (now The Brickmakers). In 1852 he paid £22 for "plot 1", comprising two acres and 32 perches including part of the woodland between Church Road and Broad Lane pond.

The owners of West Lodge in Broad Lane have kindly shown me the original land transfer document dated 2nd December 1852. The Enclosure Commissioners were William Blamie and Harry Charles Mules esquires and the document was signed by J I Stewart, the commission secretary. Ann Dollar also owned *The Bricklayers Arms* and the garden down the hill, now known as Rose Cottage.

All sorts of purchases

John's elder brother Peter (described as a bricklayer) bought "plot 2" (22 perches) which faced onto Church Road and was next to his brother's plot. He also bought "plot 16" facing onto Broad Lane, which was just over two acres and cost £34, as well as several larger plots including "plot 21" of five acres for £66. This included the land now occupied by Crofton Way. In all Peter Dollar bought plots 2, 16, 20, 21 and 323 for a total of £140. He ►

From the inn to the turnpike

Under this Act the land to be enclosed was from Church Road to what is now Waltham Chase. It included fine woodland, stretching from *The Rising Sun* to the Winchester to Gosport turnpike, known as Horders Wood – a name recalled today by "Horders View", the housing development on Gravel Hill built in 2019. In the 1770s Gravel Hill had formed part of the Gosport to Chawton turnpike, hence the coaching inns along the road.

In Droxford a district surveyor and commissioners were appointed to liaise with local interested parties. Once the apportionment of the land was agreed then a land valuer was called in; for Swanmore it was George Appleby, a land surveyor from Swanmore Farm. The original documents and a large map showing Droxford, Swanmore and Shedfield land enclosures with their reference numbers can be viewed by the public

at Hampshire Record Office. A copy of the Swanmore map is now held in the village archives.

At that time Bishop's Waltham also included parts of what are now Waltham Chase and Swanmore. The boundary with Swanmore used to run down through the small woods between Church Road and the pond and is marked by a small stream and bank.

The Bishop's Waltham surveyor was James Harris who apportioned the land and created Clewers Hill and Lane, Lower Chase Road and Broad Lane to allow cattle access to the pond, which was a key watering place. The triangle of land at Clewers Hill was set aside as a recreation area for Bishop's Waltham.

In Swanmore, the Dollar family already owned land and property. John Dollar (listed in the original documents as a brickburner) owned and operated the brick kilns behind

Rods, poles and perches...

Perch, pole or rod were names given to a surveyor's measure of 5½ yards (480cm).

An acre was defined as the area that could be ploughed by a team of eight oxen in one day and was officially one furlong (40 poles or 660ft/201m) in length, and four poles (66ft/20m) in breadth – the traditional strip of the mediæval field pattern.

However, since most land was not so regularly shaped additional measurers were used with a perch being 30¼ square yards (25sqm); 40 perches were one rood and an acre was four roods.

was the first Churchwarden of St Barnabas and he and his wife are buried in the village churchyard.

Other interesting purchases were made by Fanny Apps (shown as a widow) who was awarded the land where the village shop is now, for which she paid £3-10s (£3.50), while William Lenton (gardener) paid £1-10s for "plot 12", where Flint Cottage stands in Chapel Road. Dr Charles Berney of Holywell House purchased "plot 135", comprising one acre and 22 perches, for £30.

Most of Swanmore was sold off in small plots although large ones generally went to those who already had substantial landholdings. Peter Barfoot from Midlington received 88 acres south of the Mislingford Road, which he later sold to Charles Pink; Richard Goodlad of Park Place was awarded 65 acres and the Shean family – who lived at Swanmore Park House before Charles Myers bought and rebuilt it – gained 63 acres east of New Road.

Since much of the original area was owned by the Bishop of Winchester, he was compensated by the award of 200 acres in the area between what are now Bishopswood Road and Hospital Road. Hence the Ordnance Survey maps show Bishop's Farm, House and Woods.

There were strict obligations on the new owners to provide hedges, fences and ditches that had to be maintained in good order, while the land sales

also provided the finance to build new roads and improve old ones. These included New Road and Forest Road, allowing a link with the Winchester to Gosport turnpike (now the B2177), Bishopswood Road, Chapel Road and Mislingford Road.

Across the Meon Valley

Most villages in the Meon Valley had been enclosed around the same time as Upper Swanmore. These included Exton, Meonstoke, Hambledon, Bere Forest and Hipley. There is no Enclosure Award for West Meon but in the seventeenth century an Earl of Southampton, who was the local Lord of the Manor, applied to the Quarter Sessions to enclose a fourth part of the common land. This request was not refused as no one objected.

I was fortunate to go through some of these documents with the Winchester College Archivist. Meonstoke tenants, for example, took out a licence from the College to allow them to till the downland and a further agreement was drawn up in 1680 signed by 34 tenants to permanently divide up the 660/680 acres of Stoke Down. This cost £20 with a halfpenny extra per acre added to their rent. A more formal agreement was made in 1863. Around 89% of Exton had been enclosed by 1645 and all of the parish within the next 100 years. Enclosures led to much of the destruction of the Bere Forest: timber could be sold off and the cost of the purchase quickly reclaimed.

Good for some – but not all

Often when change occurs there are winners and losers. On the plus side, enclosure meant that the country gained reliable sources of food at affordable prices, speedily brought to rapidly-growing urban areas while farm mechanisation greatly improved productivity. Clover, marl and new fertilisers were introduced as well as foods such as swedes and turnips. Selective breeding increased quality and quantity of crops and livestock.

Among the losers were the poor labouring classes who could no longer till their fields or graze their animals on common land. Rents doubled and "keep out" notices appeared on land that had previously been freely accessible. A poem of the day summed up the situation:

*The law locks up the man or woman
Who steals the game from off the
common.*

*But lets the greater felon loose
Who steals the common from the
goose.*

Awareness that the "labouring poor" would suffer had been acknowledged by Parliament in its enclosure legislation of 1845 and the 1855 Droxford Act included 15 acres set aside in three separate lots as allotments where the poor could grow food. Amenities for the community were also considered and the Droxford settlement included ten acres reserved for recreation as well as land allocated for schools.

Swanmore was a significant beneficiary: five of the acres allocated for recreation now form the Broad Lane Recreation Ground; seven acres were provided for allotments at Gravel Hill, (these closed in the 1960s); and a four acre plot where the village school was built in 1864.

Crawford Wright



Left: Part of the detailed map showing the 1855 apportionments. The solid rectangle on the left is where St Barnabas' Church would be built with New Road immediately above, while the corner that starts Chapel Road is also apparent.

Swanmore Roads

Remembering village worthies

While the roads in Upper Swanmore have been largely unchanged since the sixteenth century and key routes in the heart of the village date from the 1855 Enclosure Act, since the 1970s there have been numerous new roads created as infill and new developments have expanded Swanmore.

Some of these roads have been named after the buildings which the developments replaced – such as “New Inn Close” after the pub, built in the 1880s, was demolished in 2012 and replaced by houses. “Glendale” is named after Glen Cottage which once occupied the site while “Orchardlea” also takes its name from a previous property.

The “Old Vicarage” is still in “Vicarage Lane”, although the church provided a smaller, more modern vicarage tucked away behind St Barnabas’ Church in the 1960s. Currently this property is rented out as the village has been without a resident vicar since May 2021.

Other new roads in the village have been named after notable former residents. Medicott Way recalls the Revd Walter Medicott (1842–1926) who was vicar of Swanmore from 1871 to 1907.

Walter Medicott and his wife Edith Sumner, granddaughter of a former Bishop of Winchester, arrived in Swanmore with two young children (Robert and Margaret) and a third (Grace) on the way; a fourth – Walter – was born in November 1872. Revd Medicott wanted to move his residence (the Parsonage, now known as Jervis Lodge) closer to the church and bought land where the new Vicarage was completed in 1873. Sadly Edith Medicott died in 1876 aged just 29, leaving the Vicar, who never remarried, to bring up four children. Perhaps not surprisingly, the new Vicarage accommodated five live-in servants.

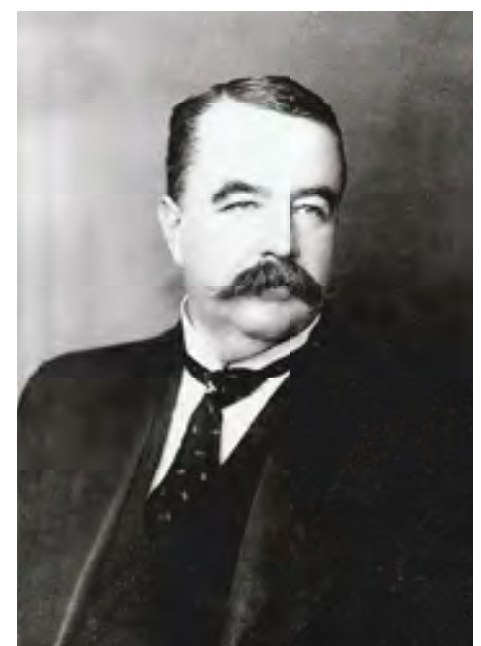
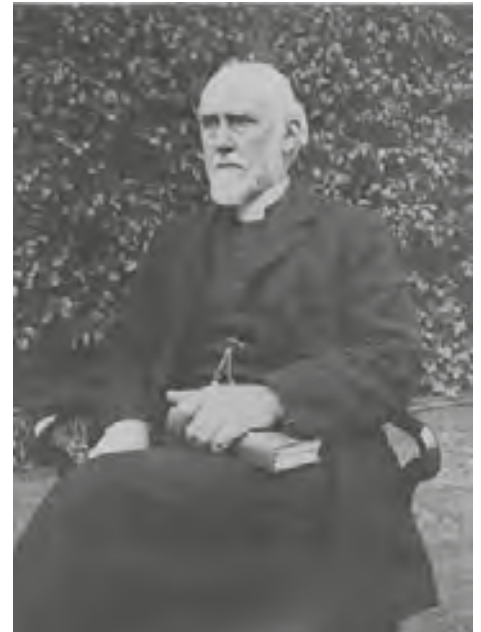
Near to Medicott Way is Martin Close named for Charles Martin,

headmaster of Swanmore School from 1876 to 1913. He was elected to the Parish Council in 1907, becoming its vice-chairman, and remained a key figure in the village as church organist and lay reader until his death in 1925 aged 72.

Throughout Charles’s time on the Parish Council William Myers of Swanmore Park was its chairman; he gives his name to Myers Close, off Spring Lane. William Myers had inherited the Swanmore Park estate from his father in 1879 and served variously as MP for Winchester (1892–1906), Deputy Lord Lieutenant for Hampshire, as a JP on the Droxford Bench and a member of the County Council from 1889. In Swanmore he was churchwarden for 50 years and was chairman of the Parish Council from its formation in 1884 until 1930. William Myers died in 1933 aged 79.

Another Parish Council member commemorated in the village is Ellen Crofton who was chairman from 1960 to 1969 and is remembered in Crofton Way. Ellen taught at Swanmore School from 1938, later becoming a governor. She joined the Parish Council in 1958.

Pictured right: from the top: Revd Walter Medicott, Charles Martin and his wife Emily, William Myers. Below: Ellen Crofton (left) sitting next to Margaret Belbin, headmistress, from a Swanmore School staff photograph of the 1950s.



Buglife

The holly and ivy butterfly

The holly and the ivy, when they are both full grown...provide an almost year-round food source for the caterpillars of the holly blue butterfly (*Celastrina argiolus*). The insect generally has two generations per year, the first hatching in March if the weather is fine.

The females of the first generation will lay eggs preferentially on holly, but can also use other plant species as larval food, such as dogwood and spindle. There is then a hiatus in the appearance of adults, often during June and July, as the grub-like caterpillars grow, develop and then pupate for a short period.

They emerge as the second generation of adults during August and September, when the females choose to lay eggs on ivy flower buds, upon which the next batch of caterpillars feed. They will then drop to the ground to pupate, emerging the following spring to begin the cycle all over again.

Holly blues are not infrequent visitors to Swanmore gardens, particularly if there are holly and ivy plants in the vicinity. Male wing upper-sides are almost uniform azure or violet blue, while female upper-side outer forewings are edged in black, more so in the later generation.

Males might be confused with common blue (*Polyommatus icarus*) males, but the holly blue wing undersides are a distinctive powder-puff-blue with curved lines of black

spots. Common blues tend to have grey-brown undersides with orange and black spots highlighted in white. They also occur in Swanmore gardens, especially if grassland is nearby, but emerge significantly later and fly nearer to the ground.

The holly blue is a boom-and-bust butterfly, as numbers can vary wildly from year to year. It is the sole host of a parasitic wasp, *Listrodomus nyctemerus*, whose larvae develop inside the caterpillars, eventually killing them. In some years the parasite can all but wipe out local holly blue populations. This means the parasite population crashes the following year, so the holly blue can then gradually re-establish itself. 2022 appeared to be a favourable holly blue year in the Swanmore area. What will 2023 bring?

Marcus Charig

Below: First generation female.
Bottom: Second generation female.



Andreas Trepte, www.avi-fauna.info

In the hedgerows An avoidable cough cure

It's always useful when the botanical name of a plant tells you something more than its colour or the shape of its flowers. *Tussilago farfara* is one such.

Tussilago comes from the Latin *tussis* meaning "cough" so it's fairly obvious that this particular plant might be useful for coughs.

Coltsfoot, its more common name, is one of our earliest spring flowers, although as they are low-growing (usually no more than 3in/8cm in height) they are easily overlooked. Unusually, too, the flowers set seed and wither, before the leaves, which resemble a colt's foot, appear.

Both parts of the plant have long been used to treat coughs – especially the dry irritating variety, whooping cough and bronchial asthma. The flowers and leaves are harvested separately and can then be combined or use in separate remedies.

Pliny suggested inhaling the smoke "through a reed" as a cure for "an inveterate cough, but the patient must take a sip of raisin wine at each inhalation". Later exponents simply rolled the rubbed dried leaves in cigarette papers – both to treat asthma and as a cheap substitute for tobacco: hence another common name "baccy herb".

Today, use of coltsfoot tends to be discouraged as it is known to contain pyrrolizidine alkaloids, which can cause liver damage, although a cultivar (*Tussilago farfara* "Wien") has been developed in Austria that has no detectable content of the toxin. It can also become very invasive – so definitely not one for the garden.

From our district councillors

Local Plan, garden waste, photo ID and energy costs

May we all wish you a very happy new year. Hopefully we shall see some changes in this coming year after the turmoil of the last three years. As the Council has been on an extended (by three days) recess over the holidays there have been no changes over what we might have been predicting.

The “first stage” of the Local Plan consultation has taken place – it closed on 14th December. So far as we are aware there were only editing changes – not unusual for a document of this size. So far as Central Meon Valley is concerned there are no surprises. The only expected building will be the completion of the sites that were already allocated under the current Local Plan i.e. the two sites opposite Swanmore College in Swanmore, along with Morgan’s Yard in Waltham Chase.

The former have been before the Planning Committee, so we know what to expect. There is still an on-going debate about the number of houses and workplaces there will be on Morgan’s Yard so that has not yet come before Planning. The only other building in the villages will be what are called “windfall sites”, where a house with a large garden is sold and the site is then developed.

The villages in the rest of the Ward are in the South Downs National Park and its planners have not yet reached the stage of choosing development sites.

Garden waste to cost more

It is time to remind you all that the fee to cover “green garden waste” collection is now due for the year 2023 to February 2024. The annual fee is now £65 for the standard size bin, and £43 for the smaller bin. As with previous years there will be a “sticker” for your bin, so the collection crews know if you have paid. Payments can be paid via the City Council website at

winchester.gov.uk under Council Services.

Remember your ID

Some will have read rumours of the need for photo ID when you go to vote in May this year. We can now confirm that they are true as from 2023 onwards, including the General Election scheduled for 2024. You will need: -

- a passport, or
- a photo driving licence, or
- an immigration document, or
- a PASS card (see box below).

If the Presiding Officer in the polling station feels there is reasonable doubt that the ID does not look like the elector or suspects that the document is forged, then you will not be given a ballot paper. A refusal is final and may not be questioned in any way. Special arrangements will be in place if, for cultural reasons, you wear a burka.

Cutting energy costs

We are frequently asked how are we all going to pay our energy bills? Some suggestions are being repeated often. Can we turn our central heating down by one degree Celsius? Do we need to have so many lights on in the evening; will only one or two do? Can we turn our hot water temperature

A PASS card is primarily a proof of age card for 16 to 18 year olds. The PASS Scheme was launched in 2000 to combat fake proof-of-age cards and was intended to help those who sell age-restricted products to avoid selling illegally to under-age customers. However, if you do not have a photo driving licence or passport then the “18+” version could be used to prove your identity for voting. Cards are available from various sources and generally cost £15. See (<https://www.pass-scheme.org.uk/card-suppliers/>) for more details.

down to 50 degrees? And remember to draw your curtains in the evening and night as some heat goes out through double glazing,

Of course, there are other, more expensive measures for the long term e.g. triple glazing, insulation in the walls and roof space, solar panels on the roof (and battery?) and air source or ground source heating.

We all expressed extreme disappointment to both HCC (Highways) and Stagecoach for the unsuitable arrangements resulting from the very necessary upgrade to the Forest Road footway in January. Stagecoach drivers deemed the suggested detour for traffic via Lower Chase Road unsuitable for buses so No 69 was diverted to miss Swanmore altogether thus cutting off users from shopping and the doctors’ surgeries in Bishop’s Waltham and Wickham.

We have not been made aware of any difficulties for the Swanmore College students using buses to get to school. Arguably an unreliable bus service is better than none at all but we found that unacceptable.

Our Winchester District Councillors

- Frank Pearson 01489 892822 – fpearson@winchester.gov.uk
- Malcolm Wallace 07739 050224 mwallace@winchester.gov.uk
- Vicki Weston 01329 835161 – vweston@winchester.gov.uk



Frank Pearson



Malcolm Wallace



Vicki Weston

Bishop's Waltham Photographic Society

Time for parties and prizes

As we came to the end of another busy year for the Society, it has to be said that it finished on a high with guest speaker David Mckibbin ARPS at the beginning of December.

David is a member and ex-president of Winchester Photographic Society, an established wedding and commercial photographer, and he gave us a presentation entitled "Jack of all trades" providing the audience with many stunning images from different genres in photography. In thanking David, John Coote said "... you have inspired us all to get out and about with our cameras and with a new sense of purpose".

Later in December the Society held its Christmas Social event. The evening began with a rather lovely buffet supplied by Julia's Kitchen, followed by a fun creative "cut and paste" session, with the aim of putting together panels/collages of images.

The evening ended with a review of members' "creations" and a wonderful pavlova supplied by Maggie Hickish! Thank you to everyone for the help provided in making the Christmas Social a success.

At our AGM at the beginning of January, a review of what was a "near-normal" programme in 2022 was followed by the annual awards.

Chairman John Coote presented trophies and certificates to the Competition League winners and runners-up, together with two other cups given in memory of Alan Inder and Mike Tennent – founder members of the Society – for respectively "The most improved photographer" and "Winner of the public vote" for the favourite image at the 2022 Annual Exhibition.

In addition the Society presented a cheque of £200 to the Hampshire and Isle of Wight Air Ambulance representative Lucy Butcher – the money was raised through sale of cards and prints at our exhibition last October.

Winners included:

- Intermediate League and recipient of the Pat Clancy Trophy: Helen Thomson.
- Advanced League and recipient of the President's Cup: Helen Otton.
- Mike Tennant Cup for "Winner of the public vote": Steve Green

New members are always welcome at BWPS – for more information visit: www.bishopswalthamphotosociety.co.uk

Dawn Blight

Jerry Draper, winner of the Alan Inder Shield for "Most Improved Photographer", receives his award from John Coote.



Wickham History Society Shedding light on Netley's hospital

The history of the Royal Victoria Hospital at Netley (pictured above) is the topic for Wickham's History Society's meeting in February.

The hospital – once regarded as "the longest building in the world" was built in 1856 with the encouragement of Queen Victoria, following reports of the appalling conditions of military hospitals in the Crimea. It subsequently provided care for injured soldiers from the Boer War and First World War and in the Second treated casualties from Dunkirk before becoming the 28th US General Hospital in 1944. In the 1950s the buildings gradually fell into disuse, with a fire in 1963 causing damage to what was left; all but the chapel, which survives, was demolished in 1966.

On 28th February at the society's monthly meeting the Royal Victoria Chapel's heritage officer Ursula Pearce will be revealing why Florence Nightingale called for the hospital's construction to be abandoned and animal skeletons graced the entrance hall. This meeting is being held via Zoom.

On 28th March the meeting topic is "The Civil War in Hampshire" with Alan Turton, while on the 25th April Jane Glennie will be reliving "Violet's Titanic Escape" with the story of stewardess Violet Jessop who was one of the lucky survivors.

Wickham History Society holds meetings at 7.30pm on the fourth Tuesday of the month.

The annual charge for membership is £8 per person with guests welcome to attend meetings for £2.50 each.

For more information visit <https://wickhamhistory.org.uk/contact/>

Bishop's Waltham Rotary

Thank you – what a year!

Many thanks to everyone for your generosity and support over the last year and in particular the Christmas period. With your help our club collected more than 370 shoeboxes filled with goodies, and these were then delivered to our district depot where some 18,000 boxes were packaged and delivered to young children in Romania, Moldova, Montenegro, and Albania. This year the many displaced children from Ukraine, currently living in Romania and Moldova, also benefitted.

Father Christmas and "Roger" his musical steam engine broke all previous records by collecting more than £5,800, which will help us to continue our charitable work in the local area, as well as nationally and internationally.

In all this year we have donated more than £14,000 to charities and deserving causes.

We have also helped many individuals in our local area who have fallen on hard times, both through our support of the local food bank and with specific one-off needs. We continued our annual support of Rotary Kids Out and Rotary Young Carers Weekend, helped Wessex Heartbeat with their work in supporting those undergoing significant heart procedures and with the upkeep of Heartbeat House, which provides a home-from-home for relatives of those undergoing treatment.

Further afield we have helped with Rotary support for building temporary

housing in Ukraine; provided emergency and rebuilding support following the Pakistan floods; and made loans to Lendwithcare, with our initial loans already starting to be repaid, making it possible for us to consider further projects.

We also financially support the work of Rotary International including its on-going work to eradicate polio. The number of countries with endemic polio has dropped to just two – we truly are so close!

Charity Golf Day

Our Charity Golf Day will be on April 27th at East Horton Golf Club in support of the Rotary Foundation Charity, Friends of In Touch in Fair Oak and Mountbatten Hospice in West End.

It will be a full and fun day starting with tea, coffee and bacon rolls at 8am, a shotgun start four-ball competition at 9am on the East Horton championship standard Greenwood Course with a refreshment buggy, followed by lunch and prize giving at 2pm in the Greenwood Room.

All proceeds raised will go to the named three charities and the cost is just £75 per person.

Our thanks to Doyle and Palmer Wealth Management of Fareham who are kindly sponsoring the event. There are 72 teams of four available and for early bookings email sara.walker@bishopsalthamrotary.org.uk.

Ian Treveil



Santa's trusty steam engine "Roger" was out and about in the district before Christmas.



Waltham Ramblers

Walks in February

Organised walks are held by the Waltham Group of the Ramblers on Wednesday (mornings) and Sundays (usually all-day). A selection is shown below, with meeting venue and leader's contact number.

Newcomers are welcome but please contact the leader beforehand in case there is any change of plan.

■ Wednesday 1st February, Droxford Square via Meonstoke, 4.7 miles, Gill and Ian 07789 768579. Start: 10am. Park in the square or nearby and meet in the square.

■ Wednesday 15th February, East Meon via Drayton and Hainaker Lane, 5 miles, Audrey 07765 965360. Start: 10am. The car park is at the western end of East Meon, off Workhouse Lane.

■ Wednesday 22nd February, West Meon via Sutton Park, 4.5 miles, Peter 07974 648970. Start: 10am. Use West Meon village hall car park.

For further information about Waltham Ramblers email michael.hewlins@btinternet.com.

Family matters

The next production at the Titchfield festival Theatre is "Family Matters" by Janette Evans which runs from the 6th to 11th February at the Oak Theatre.

The plot centres on Gill and Mary who have been friends for decades but when Mary's husband dies the friendship is challenged and the stability of family life is rocked. The play examines what it means to be a family with some surprising results.

For tickets go to: www.ticketsource.co.uk/tftheatre or visit www.titchfieldfestivaltheatre.com/whats-on/

Dates for your diaries

February

1st February	10am Waltham Ramblers, Droxford Square via Meonstoke.
6th–11th February	7.30pm “Family Matters”, Acorn Theatre, Titchfield.
8th February	8pm Swanmore Society meeting: “The West Highland Way and Great Glen Way”, with Carol Watson, Paterson Centre.
11th February	9.45am Swanmore Conservation Group work party. Marsh’s Meadow.
15th February	10am Waltham Ramblers, East Meon via Drayton and Hainaker.
20th–25th February	7.30pm Taking Liberties”, Acorn Theatre, Titchfield.
22nd February	10am Waltham Ramblers, West Meon via Sutton Park.
24th February	7pm Family Quiz and Pudding, Paterson Centre.
28th February	7.30pm Wickham History Society meeting: “The history of the Royal Victoria Hospital at Netley” with Ursula Pearce, via Zoom.

March

3rd March	2pm World Day of Prayer, St Mary’s and All Saints Church, Droxford.
4th March	7.30pm Swanmore Twinning Association, Quiz, Paterson Centre.
8th–18th March	7.30pm “The Three Musketeers”, Oak Theatre, Titchfield.
11th March	9.45am Swanmore Conservation Group work party. Marsh’s Meadow.
12th March	3.30pm Thanksgiving for Baptism, St Barnabas.
18th March	6.30pm Beetle Drive, Paterson Centre.
22nd March	8pm Swanmore Society AGM and entertainment by SADS, Paterson Centre.
27th March	12.30pm Lent Lunch, Swanmore Methodist Church.
28th March	7.30pm Wickham History Society meeting: “The Civil War in Hampshire” with Alan Turton.

April

7th April	10am Easter Craft for Children, St Barnabas.
22nd April	10am Classic Cars at Barnaby’s, Swanmore Village Car Park.
22nd–23rd April	1pm Swanmore Open Gardens, tickets at the Paterson Centre.
25th April	7.30pm Wickham History Society meeting: “Violet’s Titanic Escape” with Jane Glennie.
27th April	8am Bishop’s Waltham Rotary Club Charity Golf Day, East Horton Golf Club.

Meon Valley Lions

Great support for Santa

With Santa and his sleigh back out and about last year, the Meon Valley Lions’ Christmas collection was hugely successful, raising more than £6,200 and spreading much joy throughout the Meon Valley. Many thanks to everyone who supported us.

The money raised this year will support children in our local schools, especially helping those in receipt of free school meals to participate in more breakfast/after school clubs and school outings/year-end trips. This funding is being managed by the schools.

During the year we also supported

Age Concern, Home-Start, Meon Valley Foodbank, and East Meon Warm Hub, as well as several individual requests for help with household furnishings and equipment.

If you need help please don’t hesitate to contact us at <https://www.meonvalleylionsclub.org.uk>

Pictured (right) is Santa with excited visitors at Bishop’s Waltham’s Christmas Fayre.

■ *Save the date: This year’s Lions Swanmore Fête will be held on the Broad Lane Recreation Ground on Saturday 8th July.*

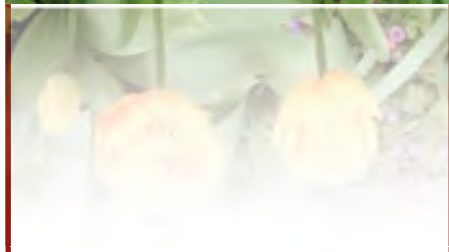
Carole Dash



Advertisers' Directory

To advertise in
The Swanmore Link
please contact
John Austin on
01489 893409 or
j.austin830@talktalk.net.

Advertisements
can now be in
full colour at no
additional
charge.



Animal services		Glass & windows	
Bishops Waltham Pet Services	30	SAJE UVPC	39
Feed the Birds	31	Steve West	30
Pest Off	33		
The Dog Room	36	Hairdressers	
		Dianne	34
Building/carpentry/property maintenance		Shades of Sweetpea	35
M R Chase	32	Health services	
J T Carpentry	37	Sarah Curry Gestalt Therapist	37
Lee Cooper	29	Mindful Bfreathe Studio	32
Dean Architectural Technician	37	Piers Spencer Osteopath	28
Diamond Carpentry	31	Saxby's Eye Care	28
R & G Gamblin	38		
Tim Millier Carpentry	34	Household services	
Geoff Pilcher	36	Elliott Carpet Care	36
N W Stubbington Ltd	33	Hampshire Antique Restoration	34
		Alan Shawyer Appliance Repairs	29
Chimneys/logs		Home Care	
Chimney Sweep	38	Lapis Care	30
R J Ralls	35		
Woodlea Nursery	33	Motor repairs	
		W J Heard	33
Computer services		Taylor's Garage	38
Computer Problems Solved	29		
		Painting and decorating	
Educational/childcare		Philip Broad	33
Sallie Smith	34	R J Fisher	31
Swanmore Pre-School	37	Mark & June Mason	33
		N W Stubbington Ltd	33
Electrical services		Plumbing/heating	
P Graham Electrical	36	CJL Plumbing and Heating	32
MFC Electrical Ltd	33	William Fleming	27
Derek Pilcher	31	J D Humphrey Ltd	33
G Rixon Ltd	29	G Rixon Ltd	29
		White Rose Plumbing	34
Fencing		Printers	
RJS Fencing Contractor	28	Solent Design	38
		Taxi services	
Financial/legal services		Chase Cars Private Hire	36
Butler & Co	36		
Chamberlains	37		
Hayhurst Jackson Ltd	35		
Nicholas Ridge	29		
Florists			
All About Flowders	31		
Food & drink			
Wyches Vineyard	26		
Funeral services			
South Downs Funeral Service	26		
Richard Steel & Partners	27		
Gardening/forestry			
Natural Gardens	30		
Richard's Grass Cutting	36		
Gerald M Vivian	33		



Award Winning Quality
English Wine from the
chalky slopes of The South
Downs in Upper Swanmore

Please contact us by email, phone, or by
completing the online form on our website.

We will deliver for free within a 20-mile
radius of Swanmore, Hampshire.

5% discount available on orders
of 12 bottles or more.



info@wychesvineyard.co.uk

Tel 07885 822289

wychesvineyard.co.uk



South Downs Funeral Service Funeral Directors & Memorial Consultants



Your Local, Independent & Family Owned Funeral
Homes of Denmead, Wickham & Clanfield

Our Clanfield Funeral Home
43 Drift Road, Clanfield PO8 0JS

Tel: 02392 570239

clanfield@southdownsfuneralservice.com

Our Denmead Funeral Home

The Old Post Office House, Hambledon Road,

Denmead PO7 6NN | **Tel: 02392 231567**

care@southdownsfuneralservice.com

Our Wickham Funeral Home

13 The Square, Wickham,

Fareham, PO17 5JG | **Tel: 01329 833920**

wickham@southdownsfuneralservice.com

Direct Funeral Services from £995.00

Traditional & Tailored Funeral Services from £1725.00

www.southdownsfuneralservice.com



Golden Charter Funeral Plans
24 hour, local and personal service
Floristry service | Stonemasonry service
No deposits required
Fully accredited and regulated members of SAIF





Plumbing & Heating

wtfleming@me.com



William
Fleming

Mobile

07775 866690

Home

01329 830379

All aspects of Plumbing & Heating

Boilers :- Servicing, Replaced, upgrades

Central Heating :- Flushed £350

Gas, LPG, Oil Log Burners

Domestic & Commercial

39 years experience

Free estimates

No call out charge

Breakdown . Service

New Installs



30832



RICHARD EST **STEEL** 1860 & PARTNERS

THE FAMILY OWNED
FUNERAL DIRECTORS

Incorporating
Nigel Chamberlain
& Partners for
over 30 years



BISHOP'S WALTHAM

The Gate House, Victoria Road,
Bishop's Waltham, SO32 1DJ
01489 892640



WINCHESTER

Alderman House, 12-14 City Road,
Winchester, SO23 8SD
01962 862333



ALRESFORD

58 West Street, Alresford,
Hampshire, SO24 9AU
01962 798789

www.steelsfunerals.co.uk
Available 24 hours



Piers Spencer

Registered Osteopath

Bishop's Waltham Osteopathic Clinic

White Hart Stables, Bank Street
Bishop's Waltham SO32 1AN

01489 891 880

piersspencer@hotmail.com

www.bwosteopathy.co.uk



2 Houchin Street, Bishops Waltham SO32 1AR

01489 896330

info@saxbys-eyecare.co.uk



AGRICULTURAL, EQUESTRIAN & DOMESTIC FENCING

Stock Fence | Deer Fence | Equifence
Post & Rail | Stake & Rail
Permanent | Electric Fencing
Closeboards | Panel Fencing | Trellis
Picket Fencing | Dog Proof Fencing

Call Richard on **07930 229649**

www.rjs-fencing.co.uk



To advertise in the
Swanmore Magazine contact

John Austin on
01489 893409

EXPERT TAX ADVICE WITH A HUMAN FACE FOR THE MEON VALLEY



WATCHING OUT FOR THE NEXT GENERATION

Is IHT a factor in making my Will? Is a Family Trust a good idea?

PROPERTY OR WORK OVERSEAS

How does it affect my tax if I live, work or have property abroad?

FOR ENTREPRENEURS

Am I the only one wondering whether it's worth all the aggro?

PERSONAL TAX

What is the best way to order my tax affairs, in full compliance with the law?

SELLING MY BUSINESS

How much tax will I pay? What is my business worth?

Nicholas Ridge ^{Cta}
TAX EXPERTISE

Oakleaf, Ludwells Lane, Waltham Chase, Southampton, SO32 2NP
t: 01489 899102 e: nicholas@nicholasridgecta.co.uk
www.nicholasridgecta.co.uk



ALAN SHAWYER DOMESTIC APPLIANCE REPAIRS

- Washing Machines •
- Tumble Dryers •
- Dishwashers •
- Cookers & Refrigeration •

T: 01489 895165
M: 07815 054077

G. RIXON LTD.

ELECTRICAL PLUMBING AND HEATING ENGINEERS



01329 834600

www.g-rixon-ltd.co.uk

enquiries@g-rixon-ltd.co.uk

OIL, LPG AND NATURAL GAS FIRED BOILERS
WORCESTER BOSCH ACCREDITED INSTALLERS
DISABLED BATHROOM SPECIALISTS

G. RIXON LTD. Wynot Heath Road Soberton Hampshire SO32 3PG

Lee Cooper
Carpentry & Building

All Types of Carpentry & Building Work Undertaken

Kitchens, Bathrooms, Windows & Doors,
Renovations & Repairs, Wardrobes & Cupboards,
Roofing, Painting & Decorating, Furniture Restoration

Professionally Qualified & Fully Insured
20+ Years of Local Experience

M: 07875 557961 T: 01489 895890

E: leeacooper@talktalk.net

W: www.leecoopercarpentry.co.uk

Computer Problems Solved

Christopher Guénier

01489 890738
07962 641796

CPS Ltd, Orchardlea
Swanmore, Hampshire. SO32 2QZ
info@computerproblemsolvedltd.co.uk
www.cps-ltd.org.uk



A qualified and experienced Computer Engineer who can efficiently solve all your home and business computer needs.

NATURAL GARDENS

ANGELA PALMERTON MCIHort, MPGCA

Gardening with Nature in Mind

WILDLIFE GARDENING
CONSULTANCY AND ADVICE
NATURAL LANDSCAPE & GARDEN DESIGN
BORDER & PLANTING DESIGNS
SPECIALIST PRUNING

Helping people to create and manage
ecologically diverse gardens and
landscapes

07789 293591
angela@natural-gardens.co.uk
www.natural-gardens.co.uk



Bishops Waltham PET SERVICES

Accredited and externally verified
Canine Behaviourist and Trainer.

Full Member of the **Institute Of Modern Dog Trainers -**
The UK's leading dog education provider

FORCE FREE PUPPY CLASSES

I run a very special Puppy Course, which delivers an up to date,
and completely force free passive learning experience for puppies.
Follow on courses and 1-2-1's also available

I specialise in working with dogs with
problem behaviour.

I only use force free, stress free, kind methods
to train, because your dog deserves a kind life.

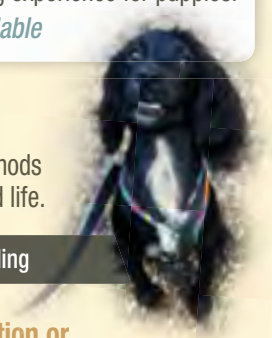


Licensed for Daycare and Home Boarding

Please contact me for more information or
to arrange a consultation or service for your dog.

Tel 07714 488412

bishopswalthampetservices@gmail.com
bishopswalthampetservices.webs.com




 **Lapis Care**
Your Local Home
Care Provider &
Consultancy Service,
Owned and Run by
Registered Nurses



Our experienced and highly
skilled team offer bespoke
packages enabling you to remain
safely in your own home. This
can include Personal and
Palliative Care, Social Visits and
Domestic duties.

Want to be part of a fantastic
team and really make a
difference?
Lapis believe that:
Cared for staff = Cared for clients
Call or email us now for more
information.

 Call us on **01489 890016** to see
how we can help you, or
email: contact@lapiscare.com



www.lapiscare.com

LOCAL GLASS REPAIRS WINDOWS & DOORS

All Aspects of Glass & Glazing



Replacement Double Glazed Units
Remedial work to Windows & UPVC Doors
Emergency Lock Outs
Lock Replacements for Windows & UPVC Doors

Steve West: 07718 513283

Email: bootneck67@icloud.com

Based in Swanmore

DIAMOND Carpentry & Construction™

All Aspects of Carpentry & Building Work Undertaken

Extensions - Refurbishments - New Builds

Fully Fitted Kitchens & Bathrooms - Doors & Windows

Bespoke Joinery - Car Ports & Garden Buildings

Decking & Fencing - Landscaping

Fully Qualified & Insured  Reliable & Trustworthy Service  High Quality Workmanship

Contact Mike Emmence for a free quotation

Mob: 07530 966318 Tel: 01489 895316

Email: sales@diamondcarpentry.com

www.diamondcarpentry.com

To advertise in the
Swanmore Magazine contact

John Austin on
01489 893409

FEED THE BIRDS

WALTHAM WILD BIRD SEED DELIVERIES

FREE local delivery service
£5.00 minimum order

(Table Top Mix)

Premium Wild Bird.. 1.8kg... £2.50

Deluxe Wild Bird 1.0kg... £2.00

Peanuts..... 1.5kg... £3.00

Sunflower Hearts..... 2.0kg... £5.00

Black Sunflower 2.0kg... £3.00

Mixed Suet..... 900g .. £3.00

(Berry & Insect Flavour)

Fat Cakes..... £1.00 each

Fat Balls..... 10 for £2.00

(Insect Flavour)

Coconuts..... from £1.25 each

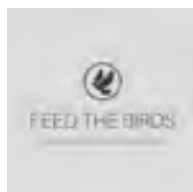
Mealworms .. 500g. £7.00

Seed Feeders... from £2.50

Peanut Holder.. from £3.00

Contact Allison McNally

07771 895 370 allisonfullerton@talktalk.net



All About Flowers at Botley Mills

Wedding Flowers, Funeral Tributes,
Bouquets, Balloons and Events

02381 781870

email:

rose.allaboutflowers@gmail.com

Daily
deliveries

www.allaboutflowers.co.uk

R.J. Fisher Ltd Interior & Exterior Painting & Decorating

Over 30 years experience

For your free estimate
please telephone

01489 331136
07921 508941

Part P Full Scope

Electrician

Derek Pilcher JIB Approved

Domestic • Commercial • Industrial
Agricultural • Rewires • Extra Sockets • Lights
Showers • Cookers • Fuseboards
Security Lights etc

Testing and Certification
Emergency Call-Out available

Mob: 07766 418 039

Email: derekpilcher36@yahoo.co.uk

To advertise in the
Swanmore Magazine contact

John Austin on
01489 893409

M. R. CHASE BUILDING COMPANY LTD.

Your Complete Building Company

A FINE FAMILY TRADITION OF
QUALITY CRAFTSMANSHIP

FREE QUOTATIONS & EXPERT ADVICE
FOR ALL YOUR BUILDING REQUIREMENTS

FOR THE BEST IN RELIABILITY,
CUSTOMER CARE & ATTENTION TO DETAIL



07966 222778

mrcbldco@yahoo.co.uk

To advertise in the
Swanmore Magazine contact

John Austin on
01489 893409

GEOFF PILCHER PLASTERING & ARTEXING

Small family business offering

Quality Workmanship at Sensible Prices
Repairs • Re Skims • Plasterboarding • Coving
Insurance Water Damage Ceiling
A Friendly Reliable Service

Please call: 023 8044 1432
Mobile: 07885 461585



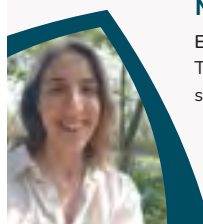
Mindful Breath Studio

Alison Potter

Mindfulness Based Stress Reduction

Eight-week online course
The gold standard in mindfulness training,
scientifically proven to alleviate stress and anxiety.

Book now for January and April 2023
alison@mindfulbreathstudio.co.uk



CJL PLUMBING AND HEATING SERVICES LTD.

Plumbing and Heating Solutions

Family run business with 16 years of local experience

Installation. Maintenance. Repairs.

Telephone: 01489 890269 or 07814971935

Email: contact@lewington.biz



Free estimates
No call out charge



Tel: 01329 832159

BPCA Qualified • Insured

W.J. HEARD MOTOR REPAIRS



SHORE LANE
BISHOP'S WALTHAM
Nr. SOUTHAMPTON
SO32 1DY

Tel: 01489 895607

www.wjheardmotorrepairs.co.uk



Servicing, Welding
Car, Motor Home and Commercial repairs
Diagnostic, MOT Testing and Air Conditioning



INTERIOR & EXTERIOR DESIGN & DECORATION

Full Colour Schemes Available

For free, friendly advice and quotes please call
Philip Broad - Tel: **023 9281 2042** Mobile: **07720 604035**
Qualified Interior Designer
Flat 7, Dymond House, Gisors Road, Southsea, PO4 8GZ

J & D Humphrey Ltd

Plumbing, Gas, Oil & Solid Fuel
Heating Installations

Gas Fitting and Servicing

Gas Safe Register No: 9995

REGISTERED PLUMBER

50 Goodlands Vale, Hedge End. SO30 4SL

Telephone: 01489 893620

Gerald M Vivian. Landscape Gardener

- ◇ Paving
- ◇ Ponds & Water features
- ◇ Brick walls & Steps
- ◇ Flintwork
- ◇ Natural Stonework
- ◇ Fencing & Gates
- ◇ Lawns
- ◇ Pergolas & Garden structures
- ◇ Driveways

Over 25 years experience with a reputation for high standards of work.

Tel: 01489 893954 Mob: 07769 690454
g.vivian@btinternet.com
www.geraldvivianlandscapes.co.uk

MARK & JUNE MASON

HUSBAND AND WIFE HIGH QUALITY
PAINTERS AND DECORATORS

Period to modern properties

We work around your requirements

Dulux Select Decorators

01329 235847/ 07973 162397

masonspaint.co.uk

SEASONED LOGS FOR SALE

Half or full load delivered

For further details call John on

07940 357839

Woodlea Nursery Durley

N.W. STUBBINGTON LTD

BUILDER • PAINTER • DECORATOR

- Extensions • Roof Repairs
- Alterations • Interior Decorator
- External Painting
- Insurance Work etc.

02392 376994 • 07967 002885

**To advertise in the
Swanmore Magazine contact**

John Austin on

01489 893409

Tim Millier

Carpentry

Your requirements to our standards

Carpentry

Built-in Lounge, Study and Bedroom Furniture
Doors fitted, Woodwork Repairs carried out
Custom Built Projects, Building Services

Joinery

Tel: 01489 892063
Email: tim.millier@gmail.com

I offer English, French and German Tuition to GCSE Level including adults returning to learning and SEN.

All subjects at Foundation, KS1 and KS2. Common Entrance Preparation. French and German Conversation Groups.

Please contact Sallie Smith,
Primary/Secondary Teacher –
33 years' experience B.A. Hons, PGCE,
DBS checked
01489 278018 - 07762 492651
salliesmith@sky.com

**To advertise in the
Swanmore Magazine contact**

**John Austin on
01489 893409**

**To advertise in the
Swanmore Magazine contact**

**John Austin on
01489 893409**

WHITE ROSE PLUMBING

All Plumbing Work From Bathroom Suites
To Tap Washers - To Blocked Drains

Contact:

Russell Beaumont

Tel: 01489 893419 - Mob: 07843 586366

Email: whiteroseplumb@googlemail.com

Are you having a BAD HAIR DAY!

- Let me help
- Ring Dianne
- 01489 877728
- 07790 782725



- **Any Time:** Can be arranged (very flexible).
- **Any Place:** Due to Covid 19 at my discretion.
- **Any Hair:** Everyday / Classic. Over 35 years experience.

At competitive prices

HAMPSHIRE
ANTIQUE
RESTORATION

Antique Furniture Conservation
French Polishing, Marquetry & Carving
Antique Clock Restoration & Repairs
Antique Silver and Metals Conservation
Ceramics, Antiquarian Books and Art
Free Estimates - Established 1985

01489 893 632 - 07830 293 078

Professional Conservation of Furniture, Clocks & Objet D'Art

w w w . r e s t o r e r . o r g . u k



Hayhurst Jackson
Limited

**ACCOUNTING & TAXATION
SPECIALISTS**

We offer a friendly and personal service

Our personal, yet professional, service allows us to tailor our work to your bespoke requirements, resulting in financial services which accurately reflect your needs.

- Bookkeeping
- VAT, PAYE & CIS
- Accounts Preparation
- Personal & Corporation Tax Returns

Martin Jackson & Linda Barham
Tel: 02380 693999/07791 547843
linda@hayhurstjackson.co.uk

21 Fontwell Gardens,
Horton Heath
Eastleigh, SO50 7NL

48 Friars Croft
Calmore, Totton
Southampton, SO40 2SS



RJ Ralls
solid fuel services

Chimney Sweep

Fully qualified and registered
Fully insured
Certificates issued

Contact Rob on **07795 060 270**

rjralls.co.uk



Debbie & her team would like to welcome you to Shades of Sweetpea hair salon. A new hairdressing business situated in Chapel Road Swanmore. Specialists in cuts and colours, also wedding and occasion hair. Pop in and pick up a price list, or book a free of charge consultation, so we can assess your hair and advise you on the right style for you and your hair.

All the family welcome!

Chapel Road, Swanmore SO32 2QB
01489 893646

Open

**Wednesday 9am-6.30pm, Thursday 10am-8pm,
Friday 9am-7.30pm, Saturday 8am-3pm**



**To advertise in the
Swanmore Magazine contact**

**John Austin on
01489 893409**

CARPET & UPHOLSTERY CLEANING HIGH QUALITY & HONEST Est 2003

- Carpets, Leather, Rug & Curtain Cleaning
- Independent Family Run & Owned Business
- Approved by Trading Standards
- Honest & Competitive Pricing
- Rapid Drying Times
- See our other reviews at;
www.elliottcarpetcare.co.uk



'We have used Elliott Carpet Care for many years and have never ever been disappointed. Carpets and sofas come up like new. The attention to detail and care taken is extraordinary'.

Call us on:
07436 266078

Richard's Grass Cutting and Hedge Trimming Services



• Call for a free estimate

• 7 days to accept or cancel



Tel: 01489 893867

Mobile: 07748 856684



Chartered Accountants
& Registered Auditors



ICAEW
CHARTERED
ACCOUNTANTS

LOCAL INDEPENDENT ACCOUNTANTS AND
TAXATION ADVISORS

FREE INITIAL CONSULTATION

Full range of accountancy, auditing & taxation services

Business start up advice

Book-keeping and Payroll Services

Self-Assessment Returns

Detailed Fixed Cost Quotes

**Avalon House, Waltham Business Park,
Brickyard Road, Swanmore, Southampton,
SO32 2SA**

Tel: 01489 896996

Email: enquiries@butlerco-bw.co.uk

Website: www.butlerco-bw.co.uk

Chase Cars Private Hire

Our courteous and professional drivers are available for:

- Local and long trips
- Airport and Dock runs
- School Runs
- 8 Seater Vehicle Available
- Business and Contract Accounts Available



Phone: **01489 894433**
email: info@chasecars.co.uk
www.chasecars.co.uk

P. Graham Electrical Ltd



Electrical Contractor



ALL TYPES OF WORK UNDERTAKEN
Domestic - Commercial - Industrial

Installation of Electric Car Charger including OLEV grant

Tel: 01489 890555 (answer phone) Mobile: 07766 525524

Email: pgrahamelectrical@btinternet.com

Based: Hoe Road, Bishop's Waltham

THE DOG ROOM

Bathing, Clipping, Scissoring
& Hand Stripping
Nails, Ears and Glands

Quiet handling,
professionally trained

Microchip service with
National reg - vet & KC trained



**Tel: Waltham Chase 01489 892272
or 07710 622881**

Sarah Curry

Qualified Experienced
Gestalt Counsellor



Are you feeling overwhelmed, anxious, stressed or depressed?

I can help. Often people just need a private space. The time to explore their thoughts and feelings. An opportunity to express themselves without being judged. I can provide a safe, welcoming environment where I can support you to work through your troubles which will enable you to make changes so that you can live and enjoy a more fulfilled life.

Please contact me for more information.

P: 07737 761920

W: sarahcurrycounselling.co.uk

E: sarah@sarahcurrycounselling.co.uk



Planning - Building Regulation Architectural Services

If you're planning on an extension, loft conversion or any alteration to your home it's always best to get professional advice.

Free consultations from a local fully qualified Architectural Technician.



Telephone Dean on 07714058475



07885 283036 or 02392 632037

Extensions | Alterations | Refurbishments
New Builds | Landscaping



Charity No: 801230

Church road, Swanmore SO32 2PA

www.swanmorepreschool.org.uk

We are open Monday-Friday 8.30am-3.30pm, term time.

We offer flexible start and finish times.

We are registered for children aged 2-5 years.

- Located in a purpose-built building for Early years
- Indoor and outdoor learning environments
- Experienced professional and friendly staff
- We work closely with families and Carers to support learning & development
- Approved to offer 15 and 30 hours EYE funding and 2 year funding

To find out more please email:
sarah.hiscock@swanmorepreschool.org.uk
or contact us on
01489-893779 or 07958 436396

CHAMBERLAINS

FAMILY SOLICITORS

Residential Conveyancing

Commercial Property

Probate & Wills

Estate Administration

Lasting Powers of Attorney

RED LION STREET
BISHOP'S WALTHAM SO32 1ST

tel (01489) 896141

info@chamberlainslaw.co.uk



Taylor's Garage
Droxford
Hampshire SO32 3QL



Tel: 01489 877433

CAR and MOTORCYCLE MOTs

Service and repair to cars
light commercials and horse trailers

Air conditioning - service & repair

Competitive prices on
tyres batteries and exhausts

Collection & delivery or loan car available
subject to availability

BUY WITH CONFIDENCE

Trading Standards Approved Trader

R & G GAMBLIN

Extension Alteration Renovation

Planning work

Bricklaying.
Civil Engineering.
UPVC Windows & Doors.
Plastic Fascia & Soffit.
Concrete.
Loft Conversion.
Roofing Pitch & Flat.
Painting.
Conservatories.

Digger Hire.
Drainage.
Fencing.
Plastering.
Driveways.
Plumbing.
Garages.
Carpentry.
Electrics.

For Free Estimates please phone

Rob

01489 - 891801

CHIMNEY SWEEP



- ◆ Professional & comprehensive service
- ◆ Stringent dust control methods observed
- ◆ No mess guarantee
- ◆ Bird guards & weather cowls fitted
- ◆ Wood stoves & multi-fuel stoves serviced
- ◆ Flue inspection & airflow testing
- ◆ Calls taken seven days a week

Tel: 01962 734029

Mobile: 07721 458067

To advertise in the
Swanmore Magazine contact

John Austin on

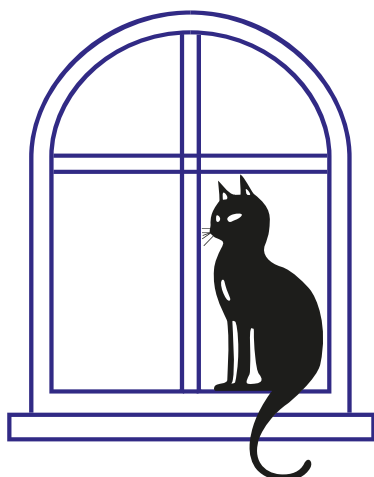
01489 893409



- Design
- Artwork
- Stationery
- Leaflets
- Flyers
- Brochures
- Booklets
- Newsletters
- Labels
- Postcards
- Folders
- Posters
- Banners
- Vinyl
- Exhibition Displays



Tel: 01489 892344 • Email: sales@solentdesignstudio.com
www.solentdesignstudio.com



SAJE UPVC LTD

**“High quality service that’s
stood the test of time”**

- Still a family business.
- Still your local manufacturer and installer.
- Still sending quotes by email/post with no pressure selling.
- Still around to support our 10 year guarantee.
- Still traditional good manners and good service.

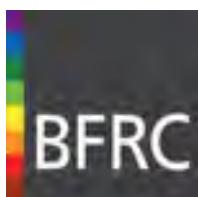
**Our range includes everything
from PVC to hardwood and
aluminium**

**Don’t believe us?
Check out our work at
checkatrade.com**

**Call us on: 01329 835836
Visit us at: www.sajeupvc.co.uk**



All together better



Registered Company

Checkatrade.com

Established in 1989

SAJE

Brookfield Farm, Mislingford Road,
Swanmore, Southampton.
SO32 2QE

Email: sales@sajeupvc.co.uk

Online: www.sajeupvc.co.uk

Parish and village directory

St Barnabas contacts

Church Wardens Janet Chant 01489 894942
Dave Lee 07941 777448
churchwardens@stbarnabas.org.uk

Ministry Team

For enquiries about weddings and baptisms
Revd Canon Nick Whitehead 01489 895327
Revd Canon Dr Hazel Whitehead 01489 895327
Funerals & bereavement support
Jill Phipps 01489 891117

Sunday Club Ben Armstrong 07927 933073
PCC Secretary TBD
PCC Treasurer Andrew Wilkinson 01489 895870
Parish Giving Champion Derrinda Laing 01489 894250
Safeguarding Officer Caroline Vost 07542 706642
safeguarding@stbarnabas.org.uk
Home Groups Co-ordinator Mary Morfill 01489 892823
Electoral Roll Officer Jenny Sharpe 01489 892750
Sacristan Vicky Cronin 01489 536483
Christian Aid Rep Wendy Horn 01489 878220
Church Cleaning Jen Frampton 01489 891277
Church Flowers Juliet Helbren 01489 893316
Captain of the Tower Ed Collis 02392 523650
Church Clock Roger de Vere 01489 892768
Data Protection contact Amanda Ankers 01489 893415
dataprotection@stbarnabas.org.uk
Parish Administrator Gail Norris
office@stbarnabas.org.uk
Website www.stbarnabas.org.uk

Paterson Centre

Enquiries office@stbarnabas.org.uk

The Swanmore Link parish magazine

Editor Penny Clive 01489 895923
editor@stbarnabas.org.uk
Village directory Roger de Vere 01489 892768
deverer2@gmail.com
Distribution Sue de Ver 01489 892768
Advertising John Austin 01489 893409

Swanmore Methodist Church contacts

Stewards stewards@s-m-c.org.uk 01489 896182
Hall Bookings swanmoremclettings@gmail.com 01489 896387
Church Notices Jill Sutton 01489 892824

Local Authorities

Hampshire County Council 03300 551375
Winchester City Council 01962 840222
Hampshire Council of Community Services 01962 854971
Electoral Registration Office 01962 840222
County Archivist 01962 863153

Local Representatives

Local MP Flick Drummond 01962 679920
Hants County Councillor Hugh Lumby 01489 877444
Winchester City Frank Pearson 01489 892822
Councillors Malcolm Wallace 07739 050224
Vicki Weston 01329 835161

Swanmore Parish Council

Executive Officer Tracey Molloy 01489 890651
clerk@swanmorepc.org.uk
Accredited Community Safety Officer
Gary McCulloch 07442 156124
aco@swanmorepc.org.uk or Facebook-Swanmore ACSO
Village archives – any enquiries should be sent to the clerk.

Swanmore College

Headteacher Kyle Jonathan 01489 892256
Community Programme Chris Loveday 01489 897896

Swanmore Primary School

Headteacher John Paterson 01489 894555
Site Manager Scot Murray 07935 699854
Friends of... (FOSPS) Naomi Thorby 01489 894555

Village Amenities

Barnaby's Community Coffee Shop 01489 854490
www.barnabys.coffee

Village Hall

Chairman Jon Woodman 01489 890582
Bookings Chris Ansty 07968 646236
bookings@swanmorevillagehall.co.uk 01329 835925

Care Group

Help numbers Barry Rowe 01489 894521
Allison Gurry 01489 895188

If no reply please ring the next number on the list. Do not leave answer phone messages. Please call between 9am and 6pm during the week and only in an emergency at weekends.

Lunch Club

Queries from new or existing volunteers
Ann Warrington 01329 510667
Queries from new or existing members
Pam Manson 01489 892374

Baby & Toddler Support

Baby & Toddler Group Zoe Smart 07788 987212
Swanmore Pre-School Sarah Hiscock 01489 893779
The Greenery Hannah Wallace 07599 954819

Police

Non-emergency 101
Community Police Officer PCSO Sarah McCulloch
sarah.mcculloch@hampshire.pnn.police.uk

Doctors

Bishop's Waltham 01489 892288
Wickham 01329 833121
Droxford 01489 877588

Hospitals

Royal Hampshire, Winchester 01962 863535
Royal South Hampshire, Southampton 02380 634288
Southampton General 02380 777222
Queen Alexandra & St Mary's Hospitals 02392 286000

Transport

Southampton Airport	02380 629600
Railway Timetable Enquiries (Domestic)	08457 484950
International Rail Enquiries	02072 785240
Local Buses (Rosemary Ridgeley)	01489 894205
Bournemouth Airport	01202 364000

Clubs and Social Organisations

Bridge	Anne Green-Wilkinson	01489 893114
Disabled Club	Susan Stephens	01489 877585
Dramatic Society (SADS)	Caroline Powell	07701 044563
Manéglise Twinning	Ian Ford	01489 890462
Meon Valley Lions Club	Carole Dash	07778 581723
Ramblers	Pauline Reed	01489 892386
Swanmore Art Group	Julia Wright	01489 893378
Swanmore Society	John White	01489 894266
Conservation Group	Carol Paling	01489 894294
Swanmore Old-Time & Modern Seq. Dancing	Francis Baxter Jean Hayman	01329 236587 01489 809271

Youth Organisations

Scouts – Group Leader	Julian Livingstone	01489 893399
Scout Leader	Jo Fox	01489 894765
Cub Scouts	Julie Goddard	07879 330707
	goddard@aol.com	
Beavers	Roisin Smith	07748 113320
	Swanmorebeavers@gmail.com	
Rainbows	Sallyann Smith	01489 890802
1st Swanmore Brownies	Sam Hemingway	01489 891624
2nd/3rd Swanmore Guides	Sarah Woodman	01489 893280
Meon Valley Rangers	Sarah Chittock	07870 136817
BW Dynamos	Chris Barber	07721 555733
	Soccer School	
Alison Fripp		
Waltham Wolves	John Hickey	01489 89913
SwanmoreYouth FC		07539 424674

Sports Clubs

Meon Valley Lawn Bowls	Judith Moss	
	jmosse@broadlane2.plus.com	
Lawn Tennis	Mandy White	
	sec@swanmoretennis.co.uk	
Swanmore Cricket Club	Oliver Rowe	07816 332324

Other Organisations

Action for Children	Brenda Simpson	01489 893810
Age Concern	Information Hub	0800 3287154
Cancer Research	Anne Pearson	01489 892822
Children's Society	Vicky Cronin	01489 536483
	Dinah Weberstadt	01489 896967
GoodNews Library-Cards	Pam Manson	01489 892374
Hand Bells	Julia Wright	01489 893378
Home-Start Hampshire	Laura Vincent	01329 835936
	Support for young families in the home	
Leprosy Mission	Bobbie Branson	01489 891717
Macmillan Cancer Support	Kathy Weaver	01489 895630
Meon Valley Carers Group	via Andover Mind	01264 332297
	enquiries@andovermind.org.uk	
Meon Valley Trefoil Guild	Denise Lord	07747 064455
Royal British Legion	Barbara Annison	01489 808147
RBL Poppy Fund	Wendy Horn	07821 236480

Swanmore Educational Trust	Richard Cooksley	01489 895776
	secretary.swanmoreET@gmail.com	
Swanmore "Litter squad"	David Street	01489 896331
Woodland Trust	Dennis Wheeler	01489 892911

Utilities Emergencies

Electricity	Emergency	0800 404090
	Power cuts	105
Gas	Emergency/escapes	0800 111999
Portsmouth Water	General enquiries	02392 499888
BT	Directory enquiries	118500

Other services

Alcoholics Anonymous		01962 869129
Animal Shelter		01329 667541
Bank Scam Service		159
Blood Donors		0800 373701
Citizens' Advice Bureau (CAB)		03444 111306
Community Health Council		01962 860661
Department of Work and Pensions (DWP)		0800 0113797
Family Conciliation Service		02392 660919
Hampshire Library Services		0845 6035631
Housing Office, Winchester		01962 840222
Job Centre, Fareham		01329 231551
Night Shelter, Winchester		01962 878500
Parent Support Link		02380 399764
PDSA	Southampton	02380 773505
	Portsmouth	02392 754429
Registrar of Births, Marriages and Deaths		03005 551392
Relate (Marriage Guidance)		01962 861336
RSPCA, Stubbington		01329 667541
Samaritans	Portsmouth	02392 691313
	Southampton	02380 632888
	Winchester	01962 860633
Social Services	Adult services	0845 6035630
	Child Services	0845 6035620

This directory has been compiled jointly by the Parish Council and churches in Swanmore to help you find contacts within the village for further information.

Please help us to help you by keeping the information up to date. Amendments or additions should be sent to Roger de Vere at deverer2@gmail.com, with "Parish magazine" as the subject, at least three days before the deadline for the magazine.



Barnaby's Community Coffee Shop

For information about news, events and to check opening times visit www.barnabys.coffee

On 21st February enjoy Pancake Day

The 21st February 2023 is Shrove Tuesday (a corruption of the old word “shrive” meaning to confess one’s sins). It is the day before the start of Lent when traditionally – before freezers – people would eat any remaining eggs, fats and similar luxuries before the 40-days of abstinence during Lent.

The French call it “*Mardi Gras*” – fat Tuesday – for similar reasons, as it was a day of both feasting and repentance. In southern Europe the days before Lent were “carnival” – believed to derive from the Latin “*carne levare*” (remove meat); a time to celebrate and enjoy life before the strictures of Lent.

Today in Britain we still traditionally eat pancakes on Shrove Tuesday – although some may have forgotten why.

To make your pancakes

Mix 100g plain flour, two large eggs, 300ml milk and a pinch of salt together to create a smooth batter. Allow the mixture to rest for 30 minutes.

- (1) Pour some sunflower oil into a cup and then a small amount of it into a small frying pan; tilt the pan to allow the oil to spread all over the surface, then pour off any surplus oil back into the cup.
- (2) Heat the pan on the hob and pour in a little batter, tilt the pan again to spread thinly and fill. When you see the top side beginning to cook (about a minute or two) flip over your pancake and cook for one minute or less on the other side.

Put a plate over a pan of gently simmering water and stack your cooked pancakes on the plate to keep warm. Repeat (1) and (2) until all your batter is used.

Add:

- a little caster sugar and a squeeze of lemon juice or
- golden syrup or
- stewed apples or
- (if you’re feeling indulgent) a teaspoon of cointreau and a sprinkling of sugar to your pancake before rolling it up and enjoying.

